

Aspen Area Community Plan



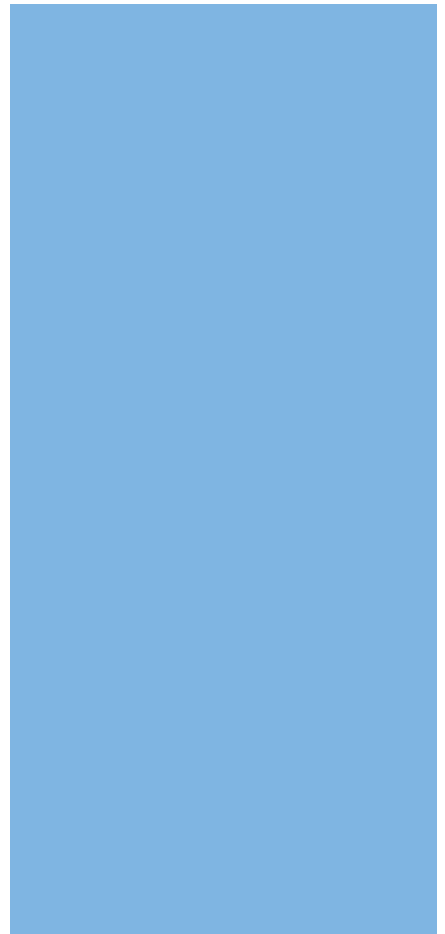
City of Aspen
and
Pitkin County

*Draft: September 15,
2011*



Contents

Introduction	6
• Background: Five Decades of Citizen Planning	6
• Themes of the 2011 AACCP	8
• Planning Area	9
• Accomplishing Goals	10
• Purpose of the Plan	11
• Going Forward	11
• How to Use the Plan	12
• How to Read the Plan	13
Aspen Idea	16
Managing Growth For Community & Economic Sustainability	20
• Changes to the Urban Growth Boundary	27
West of Castle Creek Corridor	32
Transportation	36
Housing	42
Parks, Recreation, Open Space, & Trails	48
Environmental Stewardship	54
Historic Preservation	62
Lifelong Aspenite	66



Acknowledgements

Special thanks to the many community members who participated in the crafting of the update to the Aspen Area Community Plan.

Prepared with assistance from:

City of Aspen Planning and Zoning Commission:

Stan Gibbs, Chair
LJ Erspamer, Vice Chair
Jim DeFrancia
Bert Myrin
Jasmine Tygre
Michael Wampler
Cliff Weiss

Pitkin County Planning and Zoning Commission:

Joe Krabacher, Chair
Marcella Larsen, Vice Chair
Ben Genshaft
John Howard
Mirte Mallory
Jay Murphy
Monty Thompson

City of Aspen / Pitkin County Community Development Department

Chris Bendon, Aspen Community Development Director
Cindy Houben, Pitkin County Community Development Director
Jessica Garrow, Aspen Long Range Planner
Ben Gagnon, Aspen Special Projects Planner
Ellen Sassano, Pitkin County Long Range Planner

Additional assistance provided by:

Dina Bloom, Former City P&Z member
Brian Speck, Former City P&Z member
Michael Augello, Former Pitkin County P&Z member
Jack Johnson, Former Pitkin County P&Z member
Paul Rudnick, Former Pitkin County P&Z member
Sid Smock, Former Pitkin County P&Z member

APCHA
Housing Frontiers Group
City Historic Preservation Commission
City Open Space & Trails Board
Health & Human Services POD

and the many city, county, non-profit, and business representatives who shared their valuable knowledge and input

Adopted by the Aspen City Council on _____

Ratified by the Pitkin County Commissioners on _____

Adopted by the Pitkin County and City of Aspen Planning and Zoning Commissions on _____

Introduction



Background: Five Decades of Citizen Planning

The 2011 Aspen Area Community Plan (AACP) is intended to describe a vision for the future of the Aspen Area that will help guide community decision-making for the next 10 years. Before describing the substance of the plan, it's important to briefly touch upon the historical context and underlying values that define our community.

Since the 1940s, Aspen has taken numerous intentional steps to create an ideal environment in which to live and visit, including the founding of the Aspen Institute, Music School and ski areas. Dozens of small lodges and condos were built through the 1950s and '60s.

From the 1960s to the present, citizen planners and local government consistently linked the beauty of the natural environment and the desirability of the area as a place to live and visit, and they identified small town scale as worthy of protection. Even then, people were worried about the unintended impacts of being a highly desirable place to live and visit.

- The 1966 Aspen Area General Plan stated that "The most significant change has been the ... the gradual encroachment of (housing and lodges) on the countryside."

In the 1970s, Pitkin County adopted zoning rules that preserved rural character, the City of Aspen began buying open space, a grass roots effort began preserving Victorian architecture and citizen activists succeeded in establishing several Wilderness Areas.

- The 1973 Aspen Land Use Plan was committed to "control growth and prevent urban sprawl," adding that, "Emphasis will be placed on preserving the natural environment where new development occurs."

In the 1970s and '80s, arts and cultural facilities proliferated, including the Aspen Art Museum and the City's renovation of the Wheeler Opera House. A wide range of non-profit groups focused on arts and social causes. As development pressures grew, citizen planners focused on preserving the town's built environment.

- Maintaining "Aspen's unique small town character and scale as one of its major attractions to residents and visitors," was part of the 1986 Aspen Area Comprehensive Plan: Historic Element.

With the expansion of arts and cultural institutions in the 1980s, Aspen was truly maturing as a resort economy. It was during this same period that national economic trends resulted in a proliferation of wealthy households across the country, creating an entirely new level of demand for resort properties.

From the late 1980s through 2000, the dramatic increase in property values and the steady departure of local homeowners led to concerns about the loss of year-round residents.

- “Aspen as a community should avoid an environment that is too structured, too perfect, and that eliminates the funkiness that once characterized this town ... the kind of vitality brought to Aspen by its full-time residents is being seriously diluted ...” – 1993 Aspen Area Community Plan.

In the 1990s, affordable housing was being constructed at a rapid pace to offset the loss of year-round residents. The mass transit system was doubling in size. At the same time, continued development pressures were resulting in more sprawl.

- “We should discourage sprawl and recognize its cost to the character of our community, our open spaces and our rural resources as well as the fiscal expenses associated with the physical infrastructure of sprawl.” – 2000 Aspen Area Community Plan, which adopted the Urban Growth Boundary.

From 2000 to 2008, the development and real estate industry continued to grow into a much more powerful force in the Aspen Area’s economy. Once again, there was a sense of concern about the unintended impacts of the resort’s attractiveness.

Both the 1993 and 2000 AACP state: “The success of Aspen the resort depends on the success of Aspen the community.”

Public Engagement Process

One of the primary goals of the 2011 Aspen Area Community Plan process was to undertake the broadest public feedback effort possible, in an effort to gauge community consensus on a vision for the next 10 years. This initial effort was described as “direct democracy,” and was intended to include everyone who “lives, works or visits” the Aspen Area.

Phase I began with extensive educational outreach, including the State of the Aspen Area Report: 2000-2008, and The Aspen Economy, a white paper on the history of the local economy. Educational outreach was followed by an attempt to identify shared values, explore common ground and articulate community consensus. This effort included a series of focus groups, large meetings that used instant voting technology, and social networking tools. Phase I of the public process included more than 1,000 participants, and won four awards.

The purpose of Phase II was to further articulate the community’s vision and philosophy, while drafting carefully worded policies to implement community goals. This process included the joint City and County Planning and Zoning Commissions, resource experts and the public.

Phase III was the final adoption process, including the joint P&Zs, the public-at-large, the Aspen City Council and the Pitkin County Board of County Commissioners.

Themes of the 2011 AACP

We seek to guide future development so that it contributes to the long-term sustainability of a vibrant and diverse tourism economy and a strong year-round community. Taken as a whole, the main theme of the 2011 AACP is to preserve and improve the elements of the Aspen Area that make it such an attractive place to live and a compelling place to visit.

Many parts of the 2011 AACP focus on reaffirming the Aspen Area's long-held community values. The following are some of the central themes of this plan:

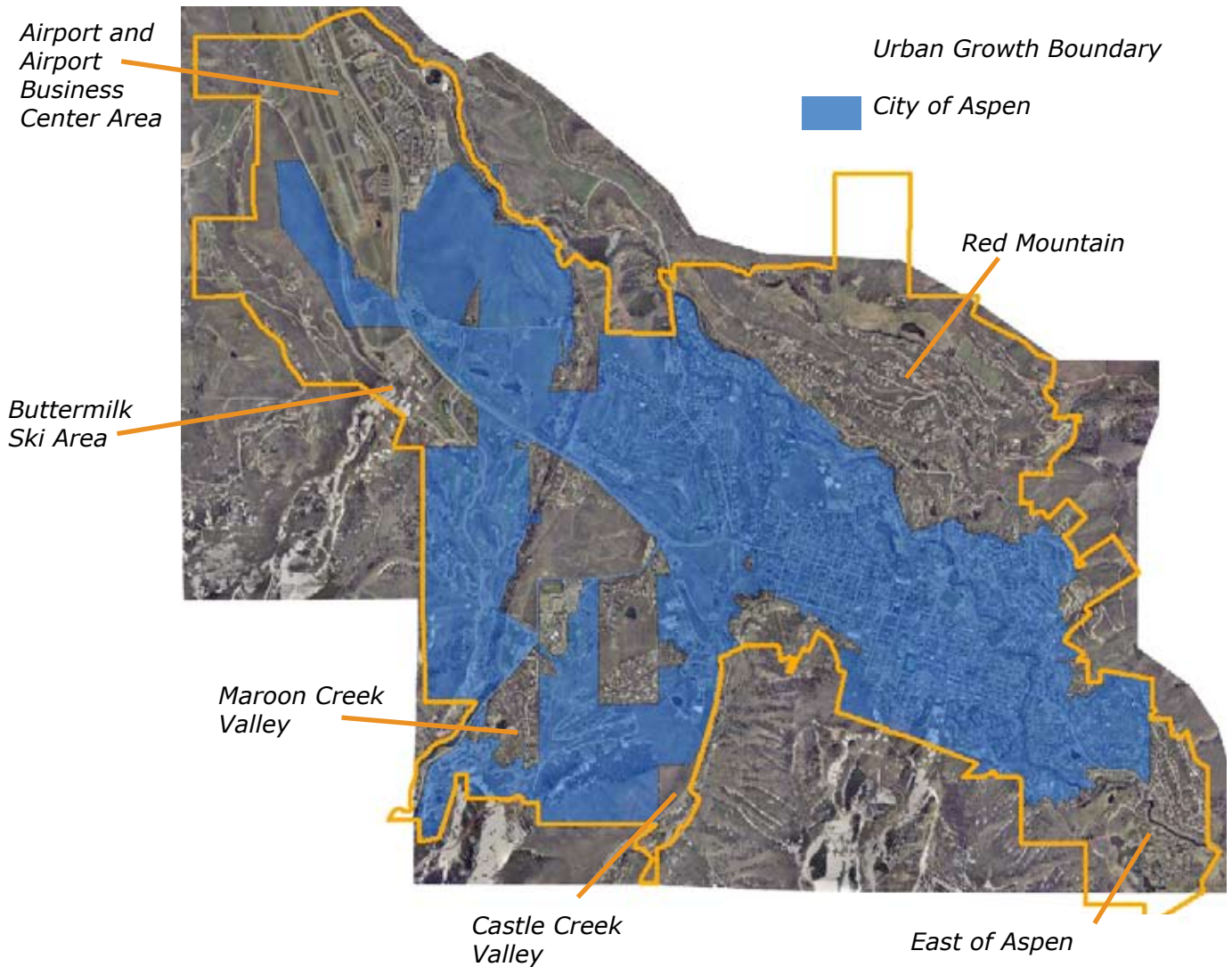
- Rediscover and reinvigorate the Aspen Idea
- Maintain our community character and quality of life
- Protect the natural ecosystems and scenic settings of mountains and rivers
- Increase focus on environmental stewardship
- Reevaluate the impacts of development on community character and quality of life
- Manage the adverse impacts of development
- Replenish our lodging inventory to encourage a diverse visitor base
- Provide for a critical mass of year-round residents
- Create a sustainable community that enables people to live their lives here
- Emphasize the quality and livability of Community Workforce Housing
- Explore zoning solutions that reaffirm our small town heritage
- Preserve open space buffers and scenic views in the West of Castle Creek area
- Improve and link alternative methods of transportation,
- Continue to acquire parks and open space and improve recreational opportunities
- Preserve historical architecture, to help us tell the unique story of our past
- Maintain the Urban Growth Boundary to avoid sprawl and its various costs

Implementing the themes of the 2011 Aspen Area Community Plan is not solely the responsibility of city and county government, but will require collaboration and cooperation among public sector agencies, businesses, private non-profits, local institutions and the general public.

Planning Area

The Aspen Area Community Plan is the Comprehensive Plan for the area within the Aspen Urban Growth Boundary. The map below depicts the planning area. The City is shaded in blue, and the Urban Growth Boundary (UGB) is outlined in orange. The portions that are not shaded are located in unincorporated Pitkin County. The portions of unincorporated Pitkin County in the UGB include Red Mountain, East of Aspen neighborhoods, the Airport Business Center, the Airport, Buttermilk Base area, and portions of the Castle Creek and Maroon Creek valleys. Areas outside the UGB are governed by a variety of caucuses that work on an ongoing basis with Pitkin County on their individual "sub master plans."

While the boundaries of the planning area are limited, we recognize that the Aspen Area is an integral part of the Roaring Fork Valley. We are dependent upon our commuting workforce, second homeowners, tourists, and those who live here full time. As a result, this plan recognizes the interconnectedness of our immediate surroundings, and all those people who make Aspen work as a community and as a resort.



Accomplishing Goals

It's important to remind ourselves that the Aspen Area community has achieved many ambitious and impressive goals over the years. Sometimes the process has been long and controversial, and just as often those achievements have ultimately become a norm for the community, and a shared value. Here are just a few examples:

- **Housing and Day Care:** In 1990, there was extensive debate on establishing a .45% sales tax for affordable housing and day care. It was a close vote, with 53% in favor. In 2008, opinions had changed – it was reauthorized with 66% in favor. There are more than 2,500 affordable housing units in the Urban Growth Boundary today, housing well over half of the area's year-round population.
- **Historic Heritage:** The Aspen City Council established the Commercial Core Historic District in 1974, ultimately resulting in the preservation of structures like the Elks and Brand buildings. It was controversial at the time, but now we now take for granted that such buildings will be protected forever. More than 200 structures are now historically designated.
- **Mass Transit:** Paid parking was the subject of widespread ire, and even picketing outside City Hall, but Council approved it as part of the Aspen Transportation Implementation Plan in July 1993. This decision has contributed to the success of the transit system, as well as the fact that traffic levels have not increased in nearly 20 years.
- **Backcountry Preservation:** In 1994, Pitkin County adopted Rural and Remote Zoning, along with a new Transferrable Development Rights (TDR) program amidst extensive debate. This is a program that has preserved more than 5,840 acres outside of the Urban Growth Boundary.

The 2011 AACP includes important new policies that will become the topics for further debate and community discussion – ultimately reflecting critical turning points for the Aspen Area community over the next 10 years.

Good Local Governance

As part of this aspirational plan, it's worthwhile to reflect on some of the most critical principles of "good governance."

It's helpful to recognize that the word "governance" did not originally refer to some kind of governmental structure as we know it today. The word "governance" comes from the Greek *kubernao*, meaning "to steer."

In the spirit of this plan, a community can find its path through collaboration and leadership not only through the processes of local government, but from the private sector and a wide range of groups and individuals.

Good governance is transparent, participatory, educational, inclusive, collaborative, civil, consensus-oriented, responsive, effective and efficient, follows the rule of law, and is accountable.

Transparency means that the process of decision-making and implementation is carried out so the public can readily engage in debate, and that reliable information is freely available. Modern technology should be used to help convey and illustrate facts and information.

Informed participation is made possible by our constitutional rights to freedom of association and freedom of expression. Providing reliable information and *education* allows for informed debate and discussion.

Inclusiveness means ensuring that the public feels they have a stake in decision-making, and does not feel excluded. Participation can evolve into *collaboration* across public and private sectors that can serve the whole community.

Good Local Governance , cont.

Civility sets the tone of productive community discourse. Civility means encouraging active debate on the issues, but discouraging personal affronts. To be *consensus oriented* means weighing different interests to reach a broad agreement on what is in the best interest of the whole community.

Good governance requires that institutions and processes are *responsive* to the needs of the public within a reasonable timeframe. *Effectiveness and efficiency* means producing results that meet the needs of society while making the best use of resources.

The *rule of law* means a fair legal framework that is enforced impartially. It also means there is predictability and fairness in government review processes.

Accountability is key to effective local government, and cannot thrive without transparency and the rule of law. The private sector and local organizations must also be accountable.

Good governance is an ideal that can be difficult to achieve in its totality. However, to ensure sustainable human development, actions must be taken to work towards this ideal with the aim of making it a reality.

Purpose of the Plan

The purpose of the Aspen Area Community Plan is to serve as a guide for the future. It is a vision, a map and a plan of action for achieving community goals.

During the life of this plan, conditions will change: We may experience economic fluctuations, new climate-related phenomena and new levels of technological capability. By definition, a long-range plan is not intended to react to short-term conditions. Instead, it is intended to root the community in its underlying values, and keep a steady course.

Going Forward

The 2011 AACP is a long-range plan that should be updated as needed, but no more than every ten-years. The Plan should be used to inform goal setting, budget priorities and work programs. Annual performance review is critical to the continuing viability and relevance of this plan. Without implementation, comprehensive plans are meaningless. The Appendix of the Plan contains a lengthy list of suggested action items that provide guidance for implementation. Many of them will require further study, formal adoption, or amendments to the land use code. This process required further public review and formal public hearings.

How to Use the Plan

The Aspen Area Community Plan shall be adopted by ordinance in the City of Aspen in conformance with Section 4.8 of the Home Rule Charter of the City of Aspen. It shall be adopted by resolution by the Pitkin County Planning and Zoning Commission in conformance with Section 30-28-108, C.R.S. There are subtle differences in the application of the plan in the City of Aspen and Pitkin County:

City of Aspen

The entire AACP should be considered a guiding and philosophical document to assist the City Council, appointed boards and commissions, City staff, and the citizens of the City of Aspen, in establishing priorities for future legislation, work plans, budgets, and the further development of future community goals. The guiding "Vision" and "Philosophy" statements contained in the AACP should be considered as aspirational and goal setting tools to assist the Aspen community in achieving its long range objectives and ambitions for the continued health and vitality of the Aspen area, its residents, and guests.

Because the AACP outlines our goals for the future, the City should conduct a yearly tracking of progress on the policies outlined in the plan. This tracking should include city staff, the city Planning & Zoning Commission, and City Council. In addition, there are many Proposed Code Amendments outlined in the Policies. The City should work on prioritizing these and begin implementation immediately following City Council's formal adoption of the Plan.

Pitkin County

Pitkin County recognizes the AACP as an advisory document as described below:

All land use applications are subject to the Policies in the Land Use Code, including one (section 1-60-20) that says "It is... policy....to ensure that the use and development of land...and any actions committing such land to development or change in use should consider Pitkin County's Comprehensive Plan." The County Land Use Code specifically requires consideration of Comprehensive Plans as a criterion of approval for certain types of land use reviews, (including special review, location and extent review, Code amendments, rezoning, activities of local and state interest, and growth management exemptions). Reference to Comprehensive Plans in the Land Use Code as a basis for reviewing and taking action on a land use application has the force of law, and where such reference is made, Plans (including the AACP) may be used accordingly.

How to Read the Plan

The Aspen Area Community Plan is divided into nine different chapters. Each chapter contains:

Vision

The Vision for each chapter is the first item you will read. These are short statements intended to outline community aspirations.

Philosophy

The Philosophy is a longer explanation of the Vision statement. It addresses each topic area in more detail and often provides a brief overview of historical context.

What's Changed Since 2000

Outlining recent history relevant to the chapter.

What's New in the 2011 AACP

Summarizing new policy direction, compared to the 2000 AACP.

Linkages

Outlining ways chapters and topics are related to one another. This plan recognizes that community goals are often inextricably linked: sometimes they complement each other, and at times they come into conflict. Each linkage section includes a symbol that illustrates some of the ways a topic is connected to other topics. (see visual at right)

Policies

Policies are based on the Vision and Philosophy statements for each chapter, and are intended to direct decision-making. The policy categories are for descriptive purposes only. Each policy falls into one of six categories that are intended to identify the underlying purpose of each policy. Each category is outlined in detail below:

1. **Community Goals** – These statements articulate our broad community aspirations. They help guide decision-making on a variety of topics.
2. **Collaborative Initiatives** – These statements suggest collaboration between a variety of groups, including the city, county, non-profits, other government agencies, businesses, etc. Additional work may result from the collaboration, but the first step is working with interested and affected parties.
3. **Incentive Programs** – These statements do not direct regulatory code changes, but look to implement new voluntary programs and policies.
4. **Work Programs** – These statements describe potential departmental work programs. They may require work from one or more departments. They do not direct code changes, but may direct internal city/county policy changes.



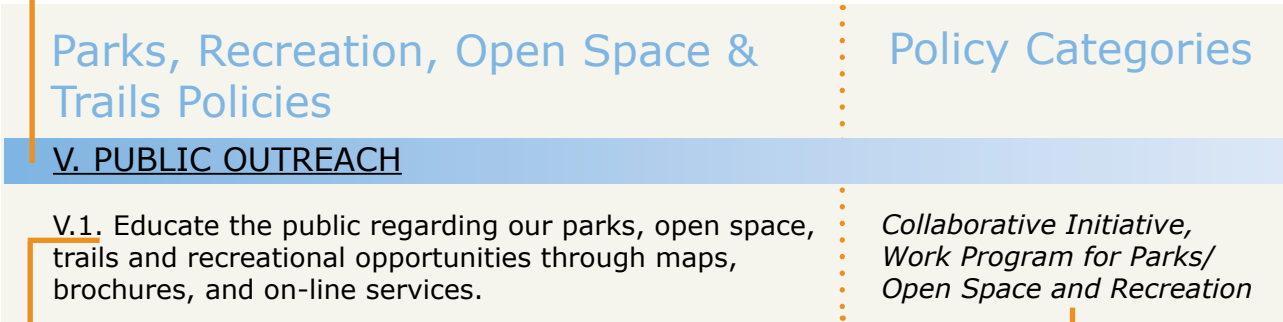
Linkages Graphic

How to Read the Plan, cont.

- 5. Data Needs** – These statements clearly identify the need for new data gathering. Data gathering may ultimately support code changes, budget priorities, work programs, and initiatives.
- 6. Proposed Code Amendments** – These statements are guiding, and provide direction for future code changes. These code changes range from exploring the creation of a development pacing system to updating affordable housing mitigation levels. These policies will require follow-up and prioritization by appointed and elected officials.

Below is an example of how to read the Policies in each chapter:

*Each chapter includes a number of Policies that are divided into sections, identified by a band of color. Public Outreach is the last section in Parks, Recreation, Open Space & Trails. Each section is labeled with a roman numeral, in this case **V**.*



*This is the first Policy under the Public Outreach policy section. Each Policy is numbered based on policy section, in this case **V.1**.*

Each Policy is divided into categories, which are identified immediately to the right of each Policy.

Appendix

In addition, the Aspen Area Community Plan includes an appendix containing the following information:

Implementation Steps

A series of suggested Implementation Steps are located in the Appendix. The Implementation Steps represent a set of suggested tools to implement the Vision, Philosophy, and Policies. They are in no way an exhaustive list of everything that could be done to further community goals, but they provide a possible road map toward implementing the community's shared vision and philosophy. The policies are re-printed in the Appendix with a list of the associated Implementation Steps.

Population Segment Chart

A chart listing the various segments of the Aspen Area's population is located in the Appendix. This chart tracks changes in each segment since the 2000 AACP, and was used by the Planning and Zoning Commissions during their review of the AACP.

Aspen Idea



Vision

We are committed to sustaining and revitalizing the Aspen Idea.

Philosophy

The Aspen Idea is a legacy that has established Aspen as a place to cultivate lifelong education, civic engagement, physical health, personal responsibility, spiritual development and an environmental consciousness. It is a fundamental awareness that mind, body and spirit can be fully integrated parts of a whole and balanced person, and this interconnectedness entails the cultivation of all three. At a basic level, this valuable concept can help provide balance to our community and to our individual lives.

The concept is attributable to Walter and Elizabeth Paepcke, and a circle of friends from Chicago who began convening intellectuals, artists, skiers, philanthropists and philosophers in Aspen after World War II.

We value authentic engagement with others, including civil discourse about the kind of community we want to create and maintain. The Aspen Idea is a core element of the community's heritage and identity, enriching our quality of life and reinforcing Aspen's national and international profile.

Despite its central role in forming Aspen's character, the Aspen Idea can sometimes feel like a historic chapter in our past, rather than an enduring and uniting concept that defines our community and sets us apart in a unique and positive way.

There are promising opportunities to raise the profile of the Aspen Idea while widening and broadening how Aspen is perceived. A collaboration including local business, ACRA, the public sector, key institutions, non-profits, and individuals can explore strategies to collectively rediscover and reinvigorate the Aspen Idea.

A collaborative approach to reinvigorating the Aspen Idea can also rebuild local enthusiasm for the Aspen Idea, create common ground to reduce stratification in the community and diversify and strengthen our visitor base.

What's Changed Since 2000

A number of local institutions and non-profits have expanded their programs and facilities since 2000. The following are just a few examples:

- Aspen Music Festival Music Tent (2000)
- Spiritual Paths Foundation at Community Chapel (Est. 2000)
- Voter approved tax to support the Healthy Community Fund (passed 2002)
- Aspen Recreation Center (2004)
- Aspen Ideas Festival (2007)
- Aspen Fire Protection District Headquarters station (2010)
- Pitkin County Animal Shelter (2005)
- Aspen Environment Forum (Est. 2007)
- Shigeru Ban-designed Aspen Art Museum (Approved 2010)
- Renovation of the historic Wheeler Opera House (2011)

The many arts and cultural events in Aspen have long supported the Aspen Idea. A 2004 study found they average a \$36 million impact to the local economy – with a majority of expenditures coming in the summer months.

At the same time, there have been some unsettling changes to local institutions, including the closure of the Silver Lining Ranch, a non-profit supporting children with cancer; and the demolition of The Given Institute, which had sponsored retreats, conferences and public lectures since 1972 under the auspices of the University of Colorado.



The Aspen Area is home to a wide variety of events - from the Music School and Festival to Food & Wine to Winterskol (pictured above) to X-Games - that play an important role in the communication of the Aspen Idea to visitors and locals alike.

What's New in the 2011 AACP

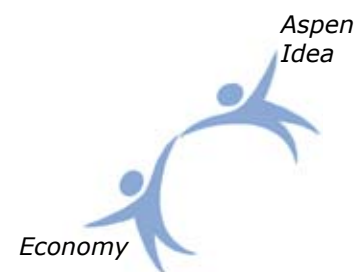
This chapter was originally titled "Arts, Culture & Education" in the 2000 Aspen Area Community Plan.

This new chapter also focuses on the accessibility of events and educational opportunities related to arts and culture, and suggests a set of standards to consider when developing new facilities or refurbishing existing ones.

Finally, this chapter calls for exploring methods to address the further loss of quasi-public institutions.

Linkages

The Aspen Idea is the basic underpinning of our thriving community. It is manifested in many ways, including our outdoor lifestyle, arts and cultural events, continuing education and the preservation of the natural environment.



Aspen Idea Policies

Policy Categories

I. REVITALIZING THE ASPEN IDEA

I.1. Support education efforts about, and encourage local and visitor participation in, the Aspen Idea.

*Community Goal,
Collaborative Initiative*

I.2. Encourage collaboration among non-profit organizations, local government, local Businesses, and individuals.

*Community Goal,
Collaborative Initiative*

I.3. Foster greater inclusivity and participation in cultural events from within the spectrum of community residents and visitors.

*Community Goal,
Collaborative Initiative*

I.4. Support and encourage activities and community infrastructure, both social and physical, that enable and sustain the Aspen Idea.

*Community Goal,
Collaborative Initiative*

II. FACILITIES

II.1. Maintain the legacy of the Aspen Idea by enhancing and preserving our non-profit and quasi-public facilities and spaces and ensuring that development of new facilities is consistent with community goals, including:

*Community Goal,
Collaborative Initiative*

- use by a diverse range of people;
- collaboration with other groups;
- programs that reach outside the facility itself and into the public realm,
- meaningful and affordable local participation in programs and offerings,
- encouraging local talent;
- an emphasis on renovation and adaptation of current structures;
- multi-purpose space; and
- use of reusable materials and renewable energy in its design and construction.

(See also Managing Growth for Community & Economic Sustainability Chapter)



Managing Growth for Community & Economic Sustainability

Vision

We are committed to achieving sustainable land use practices that support a healthy year-round community and a thriving, vibrant visitor-based economy.

Philosophy

This community plan recognizes that managing growth and economic sustainability are closely related. And have therefore been combined into one chapter for the first time.

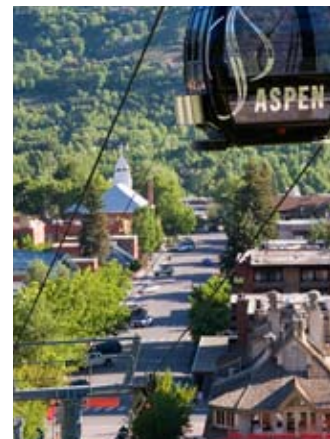
We have a long-standing history and strong ethic of growth management. Beginning in the mid-1970s, land use regulations were based on the desire to preserve the natural environment, a socially diverse community, and the unique heritage of our built environment.

Both the City of Aspen and Pitkin County have a history of implementing growth management and other land use tools to preserve open space and rural character, encourage a diverse lodging base, and maintain a critical mass of permanent residents.

The City and County growth management systems are effective tools that can help the community reach desired goals. Growth within a community needs to be like that of an individual, with the need to keep various functions balanced. The economic impact of growth management and other land use tools have been debated for many years, and should continue to be a focus of discussion and study.

Since the mid 20th Century, Aspen's primary economy has been visitor-based. Scenic views, riparian areas and a pristine natural environment reflect the Aspen area's basic values. The preservation of this natural capital has resulted in a highly attractive destination with a competitive advantage in the resort industry. This has contributed to substantial economic benefits, as well as continual development pressure.

But in many other ways we have fallen short of achieving important community goals. In the last 20 years, our economy has been eclipsed and surpassed by development-driven industries. At times, we have seen growth that is



inconsistent with the history, scale, density, and context of our built environment; the social diversity of our residents and visitors; the provision of local-serving business; the outdoor lifestyle; and small town character. The intensity of construction during booming economic periods has made us more aware of the shortcomings of our existing land use tools. Quality of life is dependent on careful management of the size of our population. We feel that the time is fast approaching where we will be at the maximum in economy, physical space, and quality of life.

Therefore, one of the broad themes of this plan is to manage future development so that it contributes to the long-term viability of a sustainable, demographically diverse visitor-based economy and a vital year-round community.

The Urban Growth Boundary

We continue to support an Urban Growth Boundary (UGB) that concentrates density to the commercial core and tapers in density out to the boundary and rural area of the County. The UGB was first adopted in the 2000 AACP, and provides an important tool against sprawl. Additional density within the commercial core should result in preservation of rural lands and must not erode our small town character. (See also the West of Castle Creek Corridor chapter)

Managing Construction Activity

Intense periods of construction activity compromise our community character and the long-term sustainability of the visitor-based economy. Therefore, we must coordinate amendments to the City and County codes to manage the impacts of construction. The purpose of managing construction impacts is to maintain our high quality of life by limiting traffic congestion, noise, dust, disturbances, air pollution, and the disruption of the visual and aesthetic character of our neighborhoods and the downtown area. This plan calls for a renewed focus on managing the impacts of intense construction activity.

While citizen plans going back to 1976 have shown consistent support for some kind of annual building permit pacing system, specific methods have met with substantial opposition in the past, and none have been implemented. A comprehensive effort to explore pacing models must be deliberate and transparent, including substantial public outreach and feedback.

The Residential Sector

While some potential remains for the residential development on vacant lots, the primary source of future residential construction will be redevelopment. The track record in the Urban Growth Boundary shows that residential redevelopment typically means the demolition and replacement of currently existing homes with expanded structures that are almost always built to the maximum square footage allowed, a trend that has had many negative impacts our community.

This plan focuses on the zoning on either side of City/County boundaries, where allowable house size differs dramatically and

Definitions

Growth: Growth is any increase in the size or activity of the community. Growth can be an increase in population, jobs, infrastructure, demand for public services, or an increase in the size or use of buildings. Growth can be a result of new development, changes in use, redevelopment, or fluctuations in the economy (jobs and public services).

Infrastructure: The physical and operational systems that support the Aspen Area. This includes traditional concepts of infrastructure, such as roads, the sewer system, water system, and the trail system. Infrastructure also includes systems that make the Aspen Area a healthy, lively, and socially balanced community, such as, affordable housing, a balanced lodging inventory, a lively and interesting downtown, unique restaurants, historic landmarks, engaging outdoor areas, recycling programs, clean air and water, compelling special events, healthy civic and non-profit organizations, essential businesses, and renewable energy systems.

Density: The number of dwelling units per unit of land.

UGB: Urban Growth Boundary. The Aspen Area's Urban Growth Boundary was adopted as part of the 2000 AACP. It delineates the boundary within which growth should be accommodated.

Infill: A planning concept that encourages new building/construction in already developed areas rather than in undeveloped or pristine lands.



The Aspen Area is home to many special events that draw a wide-range of visitors. These include Food and Wine (pictured to the left), Winter X-Games, the Music Festival, Ruggedfest, Jazz Aspen Snowmass events, and events held by the Aspen Institute.



In March 2006, the Aspen City Council identified four "themes" to explore as part of a moratorium on land use applications: one of them was "Commercial Mix." Concerns ranged from whether there were enough "locally-serving" businesses for local residents, to whether retail stores were too "high-end" for tourists. This Plan attempts to address these concerns.

can result in sudden changes in neighborhood character.

By continuing limit mass and scale, we will:

- Preserve scenic mountain views,
- Protect the natural environment,
- Limit the public financial burden of additional infrastructure and annual local government operations,
- Manage construction impacts,
- Maintain the safety and enjoyment of our outdoor lifestyle,
- Limit the unnecessary use of resources and energy,
- Reduce short- and long term job generation impacts, such as traffic congestion and demand for community workforce housing; and
- Encourage a return to our visitor-base economy.

The Lodging Sector

During the last 10-15 years, the market has favored, and the land use codes have allowed many small to mid-sized lodges to convert to other uses. This has resulted in the development of projects that are inconsistent with our town's bulk, mass, and scale

The formulation of a strategy that replenishes the lodging base, and favors a diverse lodging inventory is important to the long-term sustainability of a tourist economy that purposefully seeks to attract a diverse visitor base. Without a diversity of lodging options, we limit the ability of future generations of visitors to experience the Aspen Area and its surrounding public lands. Many of today's longtime locals first experienced Aspen thanks to "entry-level" lodging. The concept of providing equal access to Aspen has been present in long range plans dating back to 1976.

The need to accommodate a diverse visitor base is also an element of our dual season resort – while the winter visitor tends to reflect a higher-end demographic, the summer visitor is more family oriented. Finally, we also recognize that a diverse lodging inventory ensures there are places to stay for those who produce and participate in many of our critically important special events, workshops, and other activities.

The Commercial Sector

There is a concern that businesses providing basic necessities will be replaced with businesses providing non-essential goods and services. High-profile locations in the downtown have steadily converted from restaurants to retail spaces, retail spaces over time have transformed to offices, and high rents have resulted in a continuing shift towards exclusivity. The character of our community is bolstered by a diverse commercial mix. While we have taken some steps to increase retail diversity, we must pursue more aggressive measures to ensure the needs of the community are met, and to preserve our unique community character.

Public, Institutional, and Non-Profit Sector

The Aspen Area has a rich history of active involvement in civic and non-profit organizations, many of which arose from and further the Aspen Idea. Our non-profits are part of our

community's distinct identity and their continued existence is integral to our character and economic health. Our sense of community depends on the continued strength of these important and historically significant institutions. It is critical the find methods of sustaining these organizations. The public sector should be a model for the ideals reflected in this plan.

Mitigating Impacts on Community Infrastructure

This plan calls for a comprehensive re-evaluation of the impacts that development has on community infrastructure. We need a clear and reliable understanding of the wide range of impacts that development can have on the Aspen area before we can make sound decisions on fair and equitable mitigation.

The City of Aspen and Pitkin County currently require new development and redevelopment to at least partially offset impacts on the community, such as the need for parks, schools, air quality, community workforce housing, adequate roads, public transit, water, sewer, stormwater runoff etc.

Some of our mitigation methods are sound and reliable, but others may not be achieving community goals in an equitable or efficient way.

Generally speaking, private sector development should not place a financial burden on the tax-paying public, and impacts should be fully offset through various forms of mitigation. At the same time, this plan recognizes that certain types of land uses are beneficial to the community as a whole, and requiring fewer mitigation costs for such uses is in the public interest. In these cases, we must be fully aware of the level of public subsidies being granted in order to have an informed discussion on such issues. Being fully informed of how community infrastructure costs are allocated is a basic responsibility to the public.

Maintaining Our Visitor-Based Economy

Our long-term sustainability as a community and visitor-based economy depends largely on our ability to remain an attractive, welcoming, accessible, and affordable place for future generations.

As a resort community, it's important to ask ourselves: How will Aspen continue to be appealing in the next 10-20 years? Aspen has a history of innovation and reinvention, and that creative and groundbreaking spirit should serve us well in the future.

At the same time, there are a set of community values that are critical to sustain: These include preserving scenic landscapes, protecting the natural environment, creating an extensive trail network, providing unparalleled winter and summer recreational opportunities, preserving our unique architectural heritage, supporting arts and cultural institutions, maintaining a safe community, facilitating an interesting, vital and walkable downtown and fostering a sense of small town character.

Quality of Life

"Quality of life" is a term used to describe various factors, sometimes intangible, that make a community attractive to live, work, and visit. While the term is hard to define, we believe the Aspen Area has a high quality of life, and that the AACP helps to preserve this for future generations. Below is a list of just some of the things that contribute to our high quality of life.

Community Engagement:

We have an active, engaged community with diverse ideas and solutions. Whether it's for a social or environmental cause, we have a strong ethic of volunteerism and dedication to the community. We engage in broad, inclusive, and respectful civic participation and we value and respect individuality.

Natural Environment:

Our commitment to environmental quality is community-wide. The Aspen Area is home to many businesses and non-profits dedicated to environmental stewardship, and our local government has made significant strides in this area over the last 10 years. The Aspen Area has clean water and air, and is committed to preserving our natural environment. We are all able to enjoy public lands through the extensive trails, parks, and open space systems.

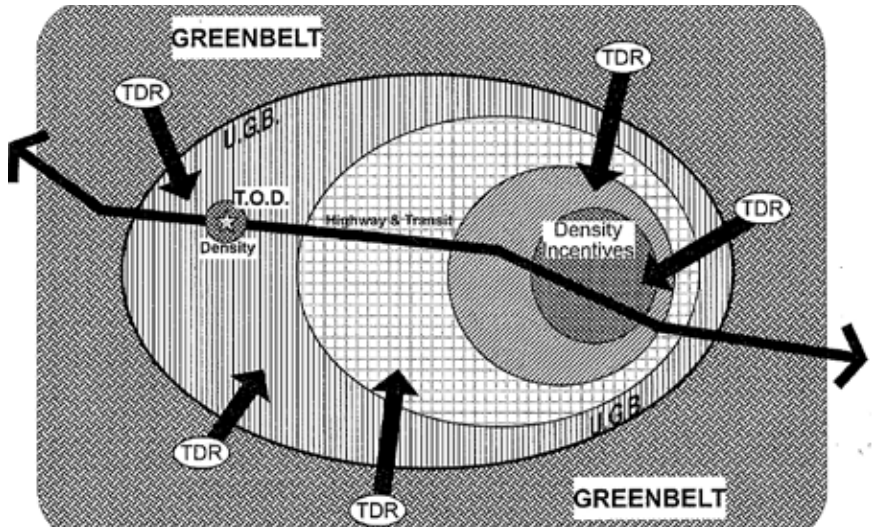
Small Town Character:

The Aspen Area has many unique buildings that contribute to our small-town character. Our built environment respects historical context, while allowing for innovation. We have welcoming, non-exclusive and casual gathering places that promote interaction among locals and visitors. Our lively and diverse downtown is an important asset that contributes to our overall character.

What's Changed Since 2000

In 2000 the AACP called for an Urban Growth Boundary (UGB) "to conserve resources." In connection with the UGB, the 2000 plan stated that, "The City agrees to accept greater density within the boundary in exchange for the preservation of important open space in the outlying County and key parcels in the City, maintaining the separation between communities, and the prevention of sprawl." The concept was that the City would accept County TDRs for increases in density within the urban area.

The drawing at right (taken from the 2000 AACP) illustrates the direction the Aspen Area would like to grow, with greater densities located in town and the downtown core and alternative development near transit-oriented development (TOD) sites. Transferable Development Rights (TDRs) indicate the desire to transfer development rights from areas in the county to developments within the Urban Growth Boundary (UGB).



In mid-2000, the City upzoned much of the central core, in some instances tripling the allowed floor area and heights. No TDRs were required in connection with the upzonings and mitigation requirements were relaxed. A flurry of land use application resulted, primarily luxury fractional interest projects and high-end commercial with luxury penthouses on top. These developments met the underlying city code but many were not supported by the public.

In this plan, we call for an analysis along with computer modeling of the city's zoning in the urban core. While the adopted design standards may be helpful on some level, the initial premise for the upzonings (i.e. the preservation of rural lands) should be reexamined.

After the upzonings were adopted, several major land use applications for the downtown were submitted. The public expressed serious concerns that the downtown would lose its character, and turn into a series of tall monolithic buildings. At the same time, some longtime local-serving businesses such as Aspen Drug were converting to other uses. Concerned about potential negative changes to the built environment and the erosion of local-serving uses, the City Council responded by adopting a moratorium in April 2006.

As a result, some changes were made to the city code, including some reductions in allowed floor area and heights, along with the adoption of "design standards." However, due to the density and intensity allowed by the current regulations and flexible processes like PUDs and COWOPs, there continues to



A new home being constructed in the Cemetery Lane neighborhood.

be considerable opposition of most new development under the code. This results in substantial uncertainty for both the public and land owners.

Between 2000 and 2010, most construction activity occurred in the form of more than 270 homes being demolished and replaced with new and larger homes. In terms of size, the average demolition and replacement project nearly doubles the square footage built on the lot. Single-family homes that were demolished between 2000 and 2007 averaged about 3,000 square feet, while the home that replaced it averaged about 5,500 square feet.

Since adoption of the 2000 AACP, Pitkin County modified the Land Use Code to limit house size to 5,750 square feet, allowing larger homes up to 15,000 square feet within the UGB only upon purchase of transferable development rights (TDRs) from remote or agricultural properties in the County or through an enhanced review process.

Since 2000, there has been a focus on public projects, including the Aspen Recreation Center, Colorado Mountain College (CMC), the Pitkin County Animal Shelter, extensive redevelopment at the Aspen School District campus, a new downtown fire district headquarters and a new fire district substation at the Aspen Airport Business Center. More recently, City Council approved an expansion of Aspen Valley Hospital and a new Aspen Art Museum. Today, preliminary planning continues for a renovated Galena Plaza an expansion of the Pitkin County Library, as well as implementation of the Airport Master Plan.

Regarding community workforce housing, the continued conversion of locally-owned homes to 2nd homes and higher real estate prices downvalley has limited options for Aspen area workers. While the retirement of workers in community workforce housing is a minor phenomena at this time, demographic projections clearly show it will become a critical issue over the next 10 to 20 years.

In March 2010, the City Council adopted an Affordable Housing Certificate Program to encourage private sector involvement in the creation of Community Workforce Housing, and as a method to provide mitigation in a more timely manner.

What's New in the 2011 AACP

One of the broad themes of the 2011 AACP is to ensure the sustainability of a demographically diverse visitor--based industry as the centerpiece of our local economy. Continuing to limit the mass and scale of homes is part of this long-term strategy. Regulating growth in the interest of preserving small-town character as well as our natural capital is in our economic self-interest, and provides a range of economic benefits for property owners and businesses.

Seeking to replenish and diversify the lodging inventory is a significant new policy compared to past AACPs. The intent is to ensure a broad visitor base over the long-term, bolstering the sustainability of our visitor-based industry. In addition, this plan calls for more aggressive measures to ensure that the commercial sector provides essential products and services, and to ensure balance between a local-serving and tourist-oriented commercial sector.

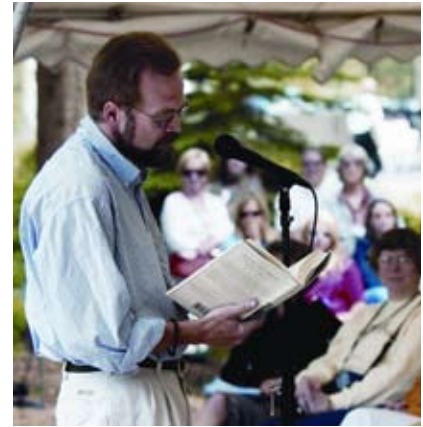
This plan also calls for a comprehensive re-evaluation of the impacts that development has on community infrastructure. Private sector development should not place a financial burden on the tax-paying public, but we also recognizes that certain types of land uses are beneficial to the community as a whole, and requiring fewer mitigation costs for such uses is in the public interest.

This plan continues to call for an Urban Growth Boundary (UGB) in an effort to limit and control sprawl. The UGB that was adopted in 2000 remains in effect, with one modification to include the entire airport runway. (See page 27)

Finally, unlike the 2000 AACP, this plan does not set a cap on population growth. This decision was not made lightly, but was based on several important conclusions. First, staff research showed that population calculations made prior to the 2000 AACP were flawed, and should not continue to be relied upon for planning purposes. Staff then conducted studies on population segments, such as the number of year-round residents, commuters, lodging visitors, 2nd home visitors and others. The exercise of breaking population down into segments is a valuable way of illustrating important trends that can help the community in future decision-making. This population segment analysis is located in the Appendix.

Finally, the bottom line is that an overall population cap is not legally enforceable, and this plan chooses instead to focus on realistic and effective tools that can help shape the future

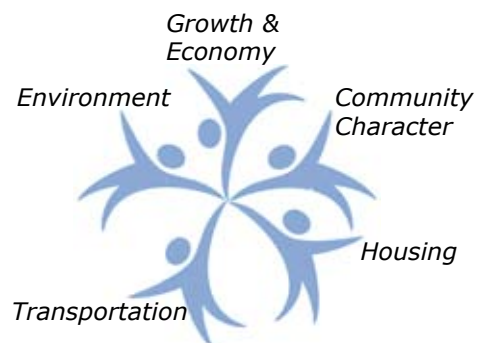
This plan also encourages examining a wide range of impacts on infrastructure that could occur as we approach build-out. Additional study to estimate and understand these impacts will help the community make important decisions during the life of this plan.



Poet Christopher Merrill reading at the 2003 Aspen Writer's Foundation Summer Words event. Aspen is known around the world for our many cultural events that seek to expand the mind, body, and spirit.

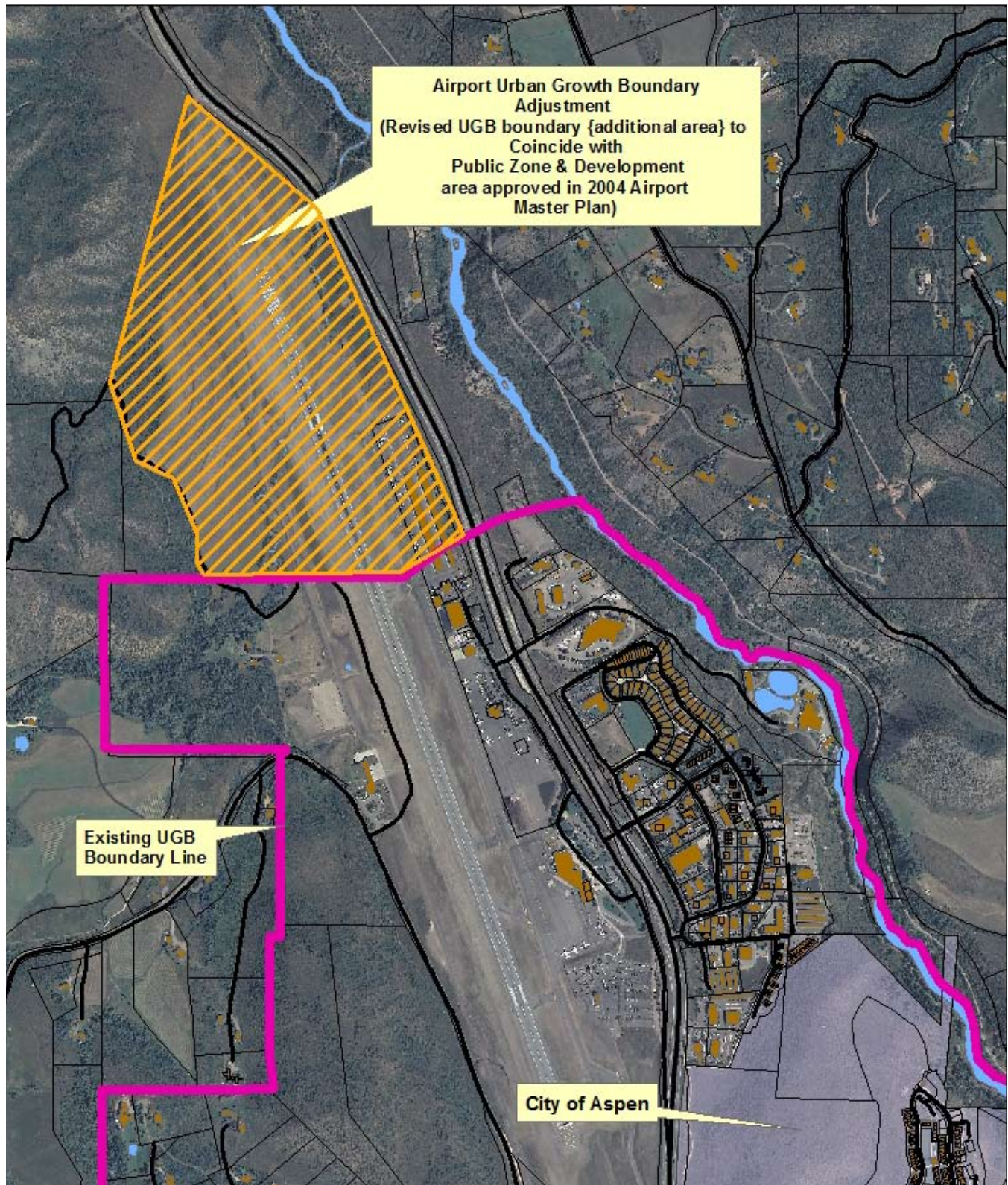
Linkages

We manage growth to ensure different community functions and uses are in balance, and to help reach community goals in the broadest sense. When we discuss the different ways to manage growth, topics include ultimate build-out, job generation, affordable housing needs, environmental impacts, infrastructure expansion, the transportation system, and the viability of our tourist-based economy. We rely on the tools of growth management to encourage the uses needed by the community, and to discourage uses that don't contribute to our vision for the future.



Changes to the Urban Growth Boundary

The P&Zs reviewed the existing Urban Growth Boundary (UGB) and proposed one change to the boundary in the West of Castle Creek Corridor Area. The map below illustrates the proposed change to add a portion of the Airport Property into the UGB (in orange hatching). The 2004 Airport Master Plan covers the entire Airport Property. The current UGB line bisects the Airport runway and does not include all the areas in the 2004 Airport Master Plan. The P&Z recommended extending the UGB line to portions of the Airport property that are zoned Public.



Managing Growth for Community & Economic Sustainability Policies

Policy Categories

I. ACHIEVING COMMUNITY & ECONOMIC SUSTAINABILITY

I.1. Achieve sustainable growth practices to ensure the long term viability and stability of our community and diverse tourist-based economy.

*Community Goal, Work
Program for Planning*

I.2. Ensure there is on-going economic analysis of the Aspen Area economy that uses a consistent metric and provides broad community understanding of the economy.

*Community Goal, Data
Gathering*

I.3. Explore and evaluate qualitative improvements to the Aspen area's tourist-based economy, that address the interests of future generations.

*Community Goal,
Collaborative Initiative*

I.4. Identify opportunities to reduce the "boom-bust" nature of the economy.

*Community Goal,
Collaborative Initiative*

I.5. Through good land use planning and sound decision making, ensure that the ultimate population of the Aspen Area does not degrade the quality of life for residents and the enjoyment of visitors.

*Community Goal, Proposed
Code Amendment*

I.6. Maintain a UGB to ensure development is contained and sprawl is minimized.

Community Goal

I.7. Urban densities should be located within the commercial core of Aspen, and appropriate increases in density should only occur if they result in the preservation of land in the proximity of the UGB through TDRs or other land use tools.

*Community Goal, Proposed
Code Amendment*

I.8. Establish lower maximum building heights to maintain Aspen's small town character.

*Community Goal, Proposed
Code Amendment*

I.9. Our public policies should be informed by reliable data on population segments* and their impacts.

Data Gathering

(*See Appendix)

Managing Growth for Community & Economic Sustainability Policies

Policy Categories

II. RESIDENTIAL SECTOR

II.1. Protect the visual quality and character of neighborhoods by minimizing site coverage, mass and scale.

Proposed Code Amendment

II.2. Control the location and limit the mass and scale of homes in order to:

Proposed Code Amendment

- Protect the natural visual quality and scenic value of river corridors and mountainsides, while also preventing environmental degradation and protecting water quality;
- Protect our small town community character and historical heritage;
- Limit consumption of energy and building materials;
- Limit the burden on public infrastructure and ongoing public operating costs;
- Reduce short- and long term job generation impacts, such as traffic congestion and demand for community workforce housing;
- Limit zoning variances to reduce impacts on the neighborhood and the community; and
- Limit site coverage

II.3. Ensure City and County codes are consistent in the vicinity of city/county boundaries to prevent shifts in the character of neighborhoods, and encourage smoother cross-boundary transitions regarding house size.

Proposed Code Amendment

II.4. Ensure that the County and City Transferrable Development Rights (TDR) programs continue to effectively preserve backcountry areas/agricultural lands, and historic structures, respectively.

Work Program for Planning, Proposed Code Amendment

Managing Growth for Community & Economic Sustainability Policies

Policy Categories

III. LODGING SECTOR

III.1. Minimize the further loss of lodging inventory.

*Community Goal,
Collaborative Initiative,
Proposed Code Amendment*

III.2. Replenish the declining lodging base with an emphasis on a balanced inventory and diverse price-points.

*Community Goal, Proposed
Code Amendment*

III.3. Lodging amenities should be designed to facilitate interaction between visitors and residents.

*Community Goal, Proposed
Code Amendment*

III.4. Zoning and land use process should result in lodging development that is compatible and appropriate within the context of the neighborhood, in order to:

*Community Goal, Proposed
Code Amendment*

- Create certainty in land development;
- Prioritize maintaining our mountain views;
- Protect our existing lodges;
- Protect our small town community character and historical heritage;
- Limit consumption of energy and building materials;
- Limit the burden on public infrastructure and ongoing public operating costs; and
- Reduce short- and long term job generation impacts, such as traffic congestion and demand for community workforce housing.

IV. COMMERCIAL SECTOR

IV.1. Encourage a commercial mix that is balanced, diverse, vital, and meets the needs of year-round residents and visitors.

*Community Goal,
Collaborative Initiative*

IV.2. Facilitate the sustainability of essential businesses that provide basic community needs.

*Collaborative Initiative,
Incentive Program, Work
Program for Planning*

IV.3. Ensure that the City code results in development that reflects our architectural heritage in terms of site coverage, mass, scale, density and a diversity of heights, in order to:

*Work Program for Planning,
Proposed Code Amendment*

- Create certainty in land development;
- Prioritize maintaining our mountain views;
- Protect our small town community character and historical heritage;
- Limit consumption of energy and building materials;
- Limit the burden on public infrastructure and ongoing public operating costs; and
- Reduce short- and long term job generation impacts, such as traffic congestion and demand for community workforce housing.

Managing Growth for Community & Economic Sustainability Policies

Policy Categories

V. PUBLIC, INSTITUTIONAL, AND NON-PROFIT SECTOR

V.1. Zoning and land use process should result in public, institutional, and non-profit development that is appropriate and respectful within the context of the neighborhood, and should clearly reflect its use.

Community Goal, Proposed Code Amendment

V.2. Public sector development should be a model for the ideals reflected in this plan, and should comply with the land use code.

Community Goal

V.3 Preserve and enhance our non-profit and quasi-public facilities and spaces. (see also Aspen Idea Chapter)

Collaborative Initiative

V.4. New or expanded non-profit facilities in the UGB should be located within the City limits, excepting non-profits with missions that reflect rural values and activities.

Proposed Code Amendment

VI. MITIGATING IMPACTS

VI.1. Quantify all impacts that are directly related to new development.

Community Goal, Work Program

VI.2. Ensure that new development and redevelopment mitigates all reasonable, directly-related impacts.

Work Program for Planning & APCHA, Proposed Code Amendment

VI.3. Allow abatements in mitigation for certain types of development that provide significant community benefits and are in the public interest.

Community Goal, Proposed Code Amendment

VI.4. Develop better methods to manage adverse construction impacts, including a construction pacing system that respects quiet enjoyment of our community and neighborhoods.

Community Goal, Proposed Code Amendment

VII. REVIEW PROCESS

VII.1. Restore public confidence in the development process.

Community Goal, Collaborative Initiative

VII.2. Create certainty in zoning and the land use process.

Community Goal

VII.3. Ensure that PUD and COWOP processes result in tangible, long-term community benefits and do not degrade the built or natural environment through mass and scale that exceeds land use code standards.

Community Goal, Proposed Code Amendment

West of Castle Creek Corridor



Vision

The West of Castle Creek Corridor area should provide a transition from the rural expanses of Pitkin County to the urbanized atmosphere of downtown Aspen. The area should feature separate and recognizable nodes of unique uses and functions, maintaining a land use pattern and scenic quality along the Highway corridor that creates a distinct series of visual experiences that signal arrival to the Aspen Area.

Philosophy

We should preserve and prioritize views of ski areas and open space in order to maintain the transitional character of the area. The success of the West of Castle Creek Area relies on enhancing our transportation system and a comprehensive planning effort that strives to maintain a distinct and memorable arrival experience. We are committed to including all of these goals in a comprehensive land use Master Plan for the West of Castle Creek Area as a follow-up to the Adoption of the AACP.

Critical to the success of the West of Castle Creek Corridor and the entire Aspen Area is improving our transportation system. A seamless connection between the City of Aspen and the West of Castle Creek Area can be achieved by improving transit services, integrating bike and pedestrian paths, implementing innovative Transportation Demand Management concepts and potential physical improvements to the Entrance to Aspen between the roundabout and 7th and Main.

The West of Castle Creek Corridor is the "gateway" to Aspen, providing both the physical entrance to Aspen and the transition from a rural landscape to the more urban townsite. The visual experience of this gateway corridor is of critical importance, and the many different views of our natural surroundings are paramount when it comes to future planning. Density, size and scale of the built environment must complement rather than detract from the natural setting.

The West of Castle Creek Corridor is home to a wide variety of important uses that define the gateway experience – the airport, a community college, a local business center, a ski area, community workforce housing, and golf courses - all of which are irreplaceable uses in our community. Each use is different in character and purpose, representing distinct, physically separated nodes of activity.

To maintain these separate and distinct uses, planning for this area should support a well-defined visual pattern and a defined set of prescribed and limited uses for each node. This area should not become an urbanized tunnel like corridor, with repetitive development and the feeling of "sameness" that define the worst kind of urban sprawl.

It is important to define and maintain the relationship between the West of Castle Creek Corridor and Aspen, with the core of Aspen remaining the primary commercial center for tourism, employment, goods and services. While convenience and land cost may encourage increased development in the West of Castle Creek Corridor, putting pressure on unique and important uses there, development should be limited to existing nodes in order to maintain undeveloped spaces between them.

The Airport Business Center (ABC) should remain a business service and limited light industrial area for Aspen residents and businesses. The ABC should include basic commercial services for residents that reduce the need for unplanned trips into Aspen. The Base of Buttermilk should continue to function as a vital recreational and lodging component of the Aspen resort community.

We are committed to developing a West of Castle Creek Corridor Land Use Master Plan that incorporates all aspects of this philosophy. The Master Plan will address appropriate zoning designations for this area. If land in the West of Castle Creek Corridor is annexed by the City prior to the adoption of the revised zoning contemplated here, then it is understood that current city zoning would not be applied, (as may be allowed by State Statute,) until recommended zoning changes are implemented. Alternatively, the City could place a moratorium on annexations in this area until revisions to the zoning are complete.

What's Changed Since 2000

The last decade has seen substantial activity in the West of Castle Creek Corridor.

Community facility improvements include the Aspen/Pitkin Animal Shelter, constructed in 2005 and the North 40 Aspen Fire District Station, constructed in 2009 to ensure that emergencies within the district outside of the Aspen core could be readily served. With respect to transportation, the Airport gained approval to extend the runway to 1,000 feet in length to better accommodate existing air service; and bus-only lanes were constructed from the Airport to the round-about at Castle and Maroon Creek Roads to ease traffic congestion on Highway 82 as it enters Aspen. As part of an overall plan to improve transit service in the region, the Roaring Fork Transit Authority completed planning for a new Bus Rapid Transit program which will include improvements to bus stations at Buttermilk and at the ABC. Given the high level of auto and pedestrian and bicycle traffic in the area, plans were also initiated for development of safe pedestrian access across the Highway in at least one location in the vicinity of the ABC.

To help ensure that traffic continues to flow as efficiently as possible given anticipated improvements in the area, Pitkin County initiated the Highway 82 Access Control Plan in conjunction with the Colorado Department of Transportation



The West of Castle Creek Corridor is located from the round-about to the end of the UGB on Highway 82. It includes all parcels of land in proximity to the highway right-of-way.

to determine the best location for intersections and turning movements along the Highway from the round-about to Owl Creek Road. The Stapleton Lot, located adjacent to Buttermilk Ski Area is jointly owned by Pitkin County and CDOT. It was acquired for the purpose of scenic corridor and open space preservation; to facilitate use of public transportation; and for the potential of a transit station or multi-modal facility, parking for recreational users and access to public lands.

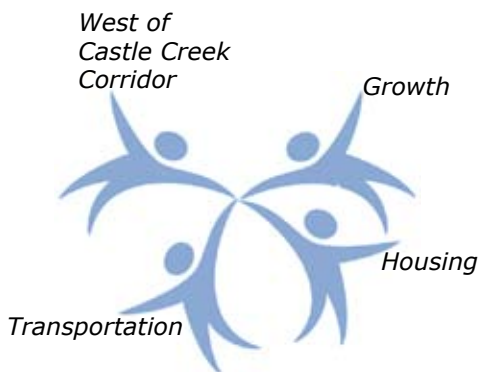
As the area continues to provide a somewhat less expensive alternative to land prices in Aspen, it has also been the location for the purchase of lands for, and/or development of workforce housing in close proximity to Aspen. The first phase of Burlingame workforce housing was built in 2006. The City of Aspen purchased and annexed the Harbert Lumber Yard with the intent of building workforce housing. Also, a new and expanded grocery store opened to meet demands of the growing local resident population in the immediate vicinity of the Business Center and in nearby Burlingame.

What's New in the 2011 AACCP

As development in the West of Castle Creek Corridor area continues to evolve, so too has the desire to balance and better define its role as the entrance to Aspen, and as it related to the Aspen core. The West of Castle chapter is new in the 2011 Plan. Though aspects of this area were addressed in broad terms in previous Aspen Area Community Plans, the new chapter provides a framework for direction as we move forward, and recognizes the need to follow up with a subsequent Master Plan for the area to provide more detailed direction.

Linkages

The new West of Castle Creek Corridor Master Plan will seek to identify and balance a wide range of factors that contribute to the success of the area, including air and ground transportation, preventing sprawl, retaining scenic views, important institutional and commercial uses, recreational opportunities that include a ski area and trail system, community workforce housing, a positive "gateway" experience and protecting the natural environment. Also critical to this planning effort is understanding and addressing how this area relates to the downtown.



West of Castle Creek Corridor Policies

Policy Categories

I. LAND USE

I.1. Planning for the West of Castle Creek Corridor should support a well-defined visual and functional pattern for a series of distinctly different “nodes” of activity supporting limited uses that are physically separated by open space.

Community Goal

II. SCENIC

II.1. The density, size and scale of all new development and redevelopment in the West of Castle Creek Corridor should maintain, and if possible enhance, the views of the natural environment seen as one travels through this portion of the Highway 82 corridor.

Community Goal

III. TRANSPORTATION

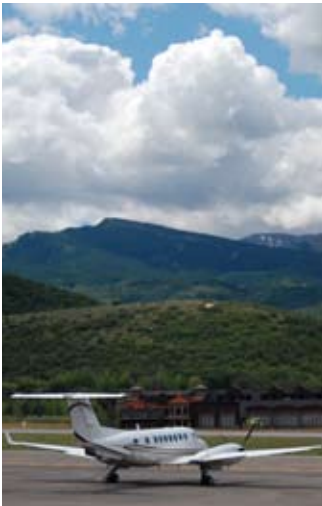
III.1. Improve the convenience, reliability, comfort, affordability, safety, capacity, and quality of experience of transit services and improve efficiency and coordination between all related aspects of transportation in the West of Castle Creek Corridor.

*Community Goal,
Collaborative Initiative*

III.2. Ensure safe and efficient pedestrian and bike connections exist within the West of Castle Creek Corridor and connect the area to the Aspen downtown.

*Community Goal,
Collaborative Initiative*

Transportation



Vision

We are committed to providing an efficient, multi-modal and integrated transportation system that reduces congestion and air pollution.

Philosophy

Our transportation philosophy comes largely from our desire to maintain a quality of life that reflects how a small town looks and feels, while accommodating the functioning of a resort area. Traffic volumes in Aspen should be less than what they are today.

Our future should be one in which the automobile plays a smaller role in people's everyday lives. We should not build additional highway lanes to accommodate more private vehicles, but should increase the percentage of trips made via alternative modes of transportation.

We should increase the percentage of trips made using alternative modes of transportation by continuing to make mass transit and the pedestrian/bike trail system more convenient, efficient, accessible, affordable and enjoyable. We support a valleywide Bus Rapid Transit system that efficiently connects to transit hubs, the airport, and trails.

The airport is an important component of our multi-modal transportation system and we support its mission to provide safe, efficient, accessible, reliable and environmentally-responsible airport services and facilities. It is essential to integrate the airport with alternative modes of transportation to diminish reliance upon rental vehicles.

Transportation is inextricably linked to land use issues. Decisions about development have a direct impact on our transportation system. New development should take place only in areas that are, or can be, served by transit, and should fully mitigate for its transportation impacts. Another important factor in reducing congestion is limiting the displacement of workers through a strong Community Workforce Housing program.

This plan emphasizes further exploring Transportation Demand Management methods, while providing important guidance for future decision-making regarding a physical solution to the Entrance to Aspen. Because each user is motivated by different travel goals, we should develop systems that encourages them to make the personal choice to use alternative modes of travel rather than rely on the automobile.

Our commitment to alternative modes of transportation helps reduce traffic congestion, improves air quality, reduces greenhouse gas emissions, promotes public health, and reduces our dependence on non-renewable resources.

What's Changed Since 2000

While our overall transportation policies remain consistent with those outlined in the 2000 AACP, a number of projects have been implemented since that have helped further the community's transportation goals.

In 2003, the City established a Hybrid Vehicle Incentive Program in an effort to promote low emission vehicle ownership and use. The program allows hybrid vehicles to use HOV parking spaces, and to apply for a vehicle registration rebate from the city.

In 2006, the City of Aspen initiated a comprehensive public process on the Entrance to Aspen. New data showed that the number of vehicles going in and out of town remained at 1993 levels largely because of the continual improvement and expansion of mass transit service, and limiting parking in town. However, as downvalley population grew over the years, congestion had expanded farther up and down the Highway 82 corridor as well as lasting for longer periods during the day.

One outcome of the public process was a May 2007 Citywide vote that approved the addition of two dedicated bus lanes from the airport to the roundabout, with 63% in favor. This fundamental change reflected public support for improving the reliability and efficiency of the mass transit system. The dedicated-lane project was completed in 2009.

In November 2008, valleywide voters approved funding to begin implementing the concept of Bus Rapid Transit (BRT) – a valleywide plan that depends partially on the success of dedicated transit lanes. At the same time, free bus service began operating year-round from Aspen to Snowmass. In 2009, the City expanded paid parking into neighborhoods around the Commercial Core to encourage the use of mass transit.

In recent years, an Airport Master Plan process has been ongoing, and a project to extend the runway has been approved. This extension would result in higher weights and more people per flight, resulting in increased efficiency, potentially fewer delays and a per-person decrease in carbon footprint.

Definitions

Transportation Demand Management (TDM):

Programs or services that maximize the use of alternative transportation. Alternative transportation generally encompasses bus, carpool, vanpool, bike, walk and carshare modes as well as compressed workweeks and telework. TDM also encompasses outreach and education programs as well as built alternatives such as park and rides, High Occupancy Vehicle lanes, etc. Economic incentives and disincentives are also considered TDM programs.

Transportation Options Program (TOP):

An employer outreach effort that currently serves about 36 businesses. It is separate from other outreach programs offered to tourists, commuters, etc.

Roaring Fork Transit Authority (RFTA):

RFTA provides regional transit services to Aspen, Snowmass, Basalt, El Jebel, Carbondale, Glenwood Springs, Rifle, and New Castle.

Bus Rapid Transit (BRT):

BRT is a rubber tire transit service that is intended to mimic the benefits of light rail service. It provides faster, more efficient service than a regular bus line through the use of stations, vehicles, running ways, a flexible operating plan, and technology. RFTA is implementing the first phase of a BRT system, known as VelociRFTA, that is anticipated to be in place by 2013.

What's New in the 2011 AACP

While the 2000 AACP sought to limit average annual daily vehicle trips (AADT), the 2011 AACP goes further by "striving to reduce peak-hour vehicle-trips to 1993 levels." This is a response to the 2007 Entrance to Aspen Reevaluation Report, which found that while we continue to meet the 1993 average annual daily vehicle trips, congestion had expanded farther up and down the Highway 82 corridor during peak hours.

Regarding physical solutions at the Entrance to Aspen, the 2000 AACP endorsed the 1997 Record of Decision (ROD), which called for crossing the Marolt Open Space with two vehicle lanes and a dedicated mass transit corridor. The 2011 AACP doesn't endorse any particular physical solution, because defining the scope of such a major infrastructure project is inappropriate for a long-range community plan and because there is a lack of community consensus around the issue.

However, the 2011 AACP continues to uphold other long-held Entrance to Aspen policies: to use new highway lanes only for public transit, and to ensure no net loss of open space at the Entrance to Aspen as part of any physical solution.

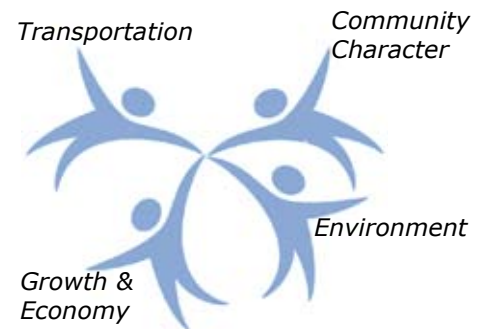
Linkages

Over the years, the Aspen Area has supported a transit-based transportation system, which helps to improve our air quality and reduce our carbon footprint. Incentivizing hybrid and electric vehicles has also been a policy aimed at improving our environmental stewardship. In addition, the continued development of a car pooling networks can help the environment as well as persons with disabilities and elderly residents who may currently have no access to transportation.

Our transit system is also essential to bringing a commuter workforce to the Aspen Area, helping our economy function. To the degree that our transportation system can be more efficient, accessible, affordable and reliable, the sustainability of our resort economy will improve.

Future decisions regarding growth management, land use tools and affordable housing will have an impact on the function and cost of our transportation system. Construction traffic can have a significant impact on our transportation system as well, and should be considered as we explore growth management and land use changes.

Major physical improvements, such as the Entrance to Aspen, must always be considered along with a sense of retaining community character.



Transportation Policies

Policy Categories

Primary Transportation Policies:

1. Use Transportation Demand Management tools to accommodate additional person trips in the Aspen Area.

*Community Goal,
Collaborative Initiative*

2. Continue to limit Average Annual Daily Trips (AADT) to 1993 levels at the Castle Creek Bridge, and strive to reduce peak-hour vehicle-trips to below 1993 levels.

*Community Goal,
Collaborative Initiative*

I. PUBLIC TRANSIT

I.1. Improve the convenience, reliability, efficiency, comfort, accessibility, affordability, safety, capacity, and quality of the regional transit service experience, while ensuring physical improvements are consistent with community character.

*Community Goal,
Collaborative Initiative*

I.2. Plan for the location and development of Park and Ride areas considering ease of intermodal transition, quality of experience, effectiveness and cost.

Collaborative Initiative

I.3. Actively promote public awareness of transit alternatives for visitors and second homeowners, including bus routes and the pedestrian/bicycle trail system.

*Collaborative Initiative,
Incentive Program, Work
Program for Transportation*

I.4. Maintain the reliability and improve the convenience of City of Aspen transit services.

*Work Program for
Transportation*

II. BIKE AND PEDESTRIAN

II.1. Extend and/or improve commuter pedestrian/bike trails with the greatest potential for integration with the public transit system.

*Collaborative Initiative,
Work Program for Parks
& Open Space and
Transportation*

II.2. Expand and improve bicycle parking/storage.

*Collaborative Initiative,
Work Program for
Transportation*

II.3. Improve the convenience, safety, and quality of experience for bicyclists and pedestrians on streets and trails.

*Collaborative Initiative,
Incentive Program, Work
Program for Transportation*

Transportation Policies

Policy Categories

III. USER GROUPS AND TRANSPORTATION DEMAND MANAGEMENT

III.1. Reduce vehicular trips that are generated by employment, special events, construction activity, schools, recreation, the service industry, local residents and other activities.

*Community Goal,
Collaborative Initiative*

III.2. Minimize the adverse impacts of development on the valley-wide transportation system that occur during economic booms and periods of intense construction activity.

*Collaborative Initiative,
Proposed Code Amendment*

III.3. Require development to mitigate for its transportation impacts.

Proposed Code Amendment

IV. ENTRANCE TO ASPEN

IV.1. We are committed first to reducing traffic by implementing Transportation Demand Management (TDM) solutions.

*Community Goal,
Collaborative Initiative*

IV.2 At the same time, the City of Aspen should develop a list of Community Objectives to evaluate options for physical improvements to the Entrance to Aspen, such as:

*Community Goal,
Collaborative Initiative*

- Retain small town character;
- Avoid a net loss of open space;
- Preserve historical resources;
- Maintain vehicle trips across Castle Creek at or below 1993 levels;
- Maintain Highway 82 as a two-lane facility for general purpose traffic with extra capacity reserved for mass transit use only.
- Increase the reliability and convenience of our public transit system and our pedestrian and bicycling system.
- Include reliable cost estimates regarding both capital built-out costs and long-term operational costs.
- Include a carbon-footprint analysis of the construction phase as well as annual operations.
- Use visual simulations to illustrate how improvements would impact the flow of vehicular traffic and the user experience.

V. PARKING

V.1. Manage the supply of parking to reduce the adverse impacts of the automobile.

*Collaborative Initiative,
Work Program for Parking
and Transportation*

Transportation Policies

Policy Categories

VI. EDUCATION AND PUBLIC OUTREACH

VI.1. Ensure that public outreach includes the latest technologies for the purpose of well-informed decision-making regarding transportation.

Collaborative Initiative

VI.2. Build awareness regarding government subsidies for transportation, including the fact that subsidies not only support public transit but also provide major subsidies to sustain roads and highways.

Collaborative Initiative

VII . AIRPORT POLICIES

VII.1. Strengthen the Airport's role in the valley-wide regional transportation system.

Collaborative Initiative

VII.2. Increase the quality and availability of information on travel options.

Collaborative Initiative

VII.3. Improve the efficiency and reliability of airport services while reducing environmental impacts.

Work Program for Airport

VII.4. Improve the overall quality of the airport experience in a manner that is consistent with our community character.

Work Program for Airport

VII.5. Reduce the negative impacts of Airport operations on the surrounding area.

Work Program for Airport

VII.6. Improve the convenience, efficiency and environmental impacts of ground transportation options available at the Airport.

Work Program for Airport

VIII. FUNDING

VIII.1. Increase funding for public transit so that service is consistent and reliable with a preference for stable and sustainable revenue sources.

Collaborative Initiative

IX. DATA GATHERING

IX.1. Ensure that enough clear and understandable data is gathered and compiled for the purpose of well-informed public decision-making.

Data Needs

IX.2. Quantify user groups on the transportation network to better customize TDM strategies.

Data Needs

Housing



Vision

We believe that a strong and diverse year-round community and a viable and healthy local workforce are fundamental cornerstones for the sustainability of the Aspen Area community.

Philosophy

We believe in continuing to provide Community Workforce Housing because it supports:

- A stable community that is invested in the present and future of the Aspen Area
- A reliable workforce, also resulting in greater economic sustainability;
- Opportunities for people to live in close proximity to where they work;
- A reduction in adverse transportation impacts;
- Improved environmental sustainability;
- A reduction in downvalley growth pressures;
- Increased citizen participation in civic affairs, non-profit activities and recreation programs;
- A better visitor experience, including in an appreciation of our genuine, lights-on community;
- A healthy mix of people, including singles, families and seniors.

It's important to note that this plan refers to Community Workforce Housing, rather than employee housing or affordable housing. This is an effort to acknowledge that housing is intended both to encourage a local workforce and to build a sense of community. Although the name has changed, many of the philosophical statements in the 2000 AACP still ring true today:

"We believe it is important for Aspen to maintain a sense of opportunity and hope (not a guarantee) for our workforce to become vested members of the community. .. (We seek) to preserve and enhance those qualities that has made Aspen a special place by investing in our most valuable asset – people."

"Our housing policy should bolster our economic and social diversity, reinforce variety, and enhance our sense of community by integrating affordable housing into the fabric of our town. A healthy social balance includes all income ranges and types of people. Each project should endeavor to further

that mix and to avoid segregation of economic and social classes ...”

Living in Community Workforce Housing is not a right or a guarantee, but a privilege, carrying with it responsibilities to future generations, such as long-term maintenance and regulatory compliance.

The creation of Community Workforce Housing (CWH) is the responsibility of our entire community, not just government. We should continue to explore methods that spread accountability and responsibility for CWH to the private sector, local taxing districts and others.

We continue to support the following statements in the 1993 and 2000 AACP: *“Housing should be compatible with the scale and character of the community and should emphasize quality construction and design even if that emphasis increases [initial] costs and lessens production, [within reason].”* At the same time, new construction should emphasize the use of durable and renewable materials in order to improve our environment stewardship.

The provision of CWH remains important due to several factors, including the continued conversion of locally-owned homes to 2nd homes, a trend of a more costly downvalley housing market and the upcoming trend towards retirement in CWH. With limited vacant land in the Aspen Area and limited public funds, we can’t build our way out of this problem.

We should demonstrate our commitment to future generations by providing educational outreach regarding long-term maintenance and regulatory compliance, by adopting a strategic plan for long-term maintenance of publicly-owned rental properties, and for handling “unique” properties, such as those with a sunset on deed restrictions. At the same time, we need a new focus on the issues surrounding retirement in Community Workforce Housing, as we are on the brink of a rising retiree demographic. In addition, we should continue to provide housing that accommodates the needs of people with disabilities.

Our CWH program is continually encountering new crossroads that demand creative thinking, understanding and thoughtful action.

Definitions

Community Workforce Housing (CWH): Housing created to support a strong year-round community and a strong workforce. Also known as deed-restricted housing, and Affordable Housing.

On the Horizon

As the community continues to provide Community Workforce Housing, it is important to recognize and understand future challenges.

We must continue to track changes to the Colorado Common Interest Ownership Act (CCIOA) and update our housing policies on a timely basis.

APCHA should vigorously promote adoption of CCIOA by existing associations, and require new associations to adopt CCIOA.

Lending practices are changing, resulting in new and potentially difficult financing.

Aspen Area Housing History

In the early 1970's, free-market housing that had primarily housed local employees was being demolished and redeveloped as second homes. By 1974, the City and County began addressing this trend by establishing separate affordable housing programs and 14 years later formed the joint Aspen/Pitkin County Housing Authority (APCHA). APCHA is currently funded through a City of Aspen sales tax and a Real Estate Transfer Tax (RETT).

The State enacted legislation in 2001 granting Housing Authorizes across the state specific powers to raise revenue through sales taxes, use taxes, an ad valorem (property) tax, and/or a development impact fee. To date, APCHA has not pursued these revenue sources. The City of Aspen has a housing sales tax, and both the City of Aspen and Pitkin County have Housing Mitigation fees.

APCHA operates under the 4th Amended Intergovernmental Agreement between the City of Aspen and Pitkin County. This agreement has eliminated APCHA's role as an active developer of workforce housing; that role has been assumed by the City of Aspen.

Currently, APCHA is principally involved in the qualification, sales, and enforcement of the workforce housing program and is involved in the oversight of over 2,800 units of deed-restricted housing. The APCHA Board of Directors alone, or in concert with other entities, suggests new policy, programmatic changes, and legislation, or makes recommendations, as required by the City, County or State.

What's Changed Since 2000

Since the adoption of the 2000 AACP, a total of 652 new community workforce housing units have been constructed, with another 181 approved but not yet built. By any measure, these are impressive accomplishments, but various relevant trends have continued to challenge the goal of establishing and maintaining a "critical mass" of working residents, as stated in the 2000 AACP.

While the ratio of local workers living in community workforce housing units increased from 25% to 32% from 2000 to 2008, the ratio of local workers living in free market homes dropped from 22% to 13%, the result of continued conversion of locally-owned free market homes to 2nd homes.

At the same time, the economic boom period of 2004 to 2007 saw a dramatic increase in the cost of downvalley land and homes, reducing opportunities for Aspen workers to find free market ownership options in the valley. While the recession has rolled back prices, this plan must assume that the economy will experience another period of prosperity during the life of the plan. In addition, the number of retirees in deed-restricted housing is estimated to jump from approximately 310 today to more than 800 in 2021.

The 2007 Housing Summit considered all these factors and more. The primary outcome of the Summit was to encourage additional "land-banking," which ultimately resulted in the purchase of the BMC West property, a parcel at 488 Castle Creek Road and others. The 2008 Affordable Housing Plan evaluated 15 potential sites for community workforce housing units, identifying a range of up to 685 possible housing units.

What's New in the 2011 AACP

The re-use of philosophical language from past community plans is due largely to the long-term support in the Aspen Area for Community Workforce Housing as a critical tool to maintain a strong year-round community.

Some shifts in policy direction for the 2011 AACP can be attributed to the long-term growth and maturation of the housing program, bringing greater awareness of the need for long-term capital reserves and maintenance for individually-owned and rental properties, as well as publicly-owned rental properties.

Another difference in the 2011 AACP is the decision not to establish a specific number of housing units to be developed during the 10-year life of the plan. This should not be perceived as a wavering of support for community workforce housing units. The plan calls for exploring the potential of a new housing

unit goal, but specific research on this topic was not conducted as part of this update.

This plan focuses on the ongoing challenges of establishing and maintaining a “critical mass” of working residents. The policies outlined in the Housing chapter and related housing mitigation policies in the Managing Growth & Economic Sustainability chapter are intended to meet these challenges as the community continues to provide CWH.

At the same time, the 2011 AACP calls for further research on the physical limits to development in the form of ultimate build-out, projected future impacts related to job generation, demographic trends, the conversion of local free market homes and other factors. This kind of statistical analysis will help inform future decision-making and goal-setting in a more meaningful way.

Instead, this plan emphasizes the need to spread accountability and responsibility for providing community workforce housing units beyond the City and County governmental structures, and continuing to pursue CWH projects on available public land through a transparent and accountable public process.

While past plans have supported “buy-down” alternatives, there has been little comprehensive effort in this regard. A “buy-down” program may be an expensive proposition, but this plan calls for exploring it more thoroughly. The idea is to finally determine if the community is willing to pay the price for providing long-term CWH by converting existing free market homes, and or CWH, rather than building new development.

Linkages

The creation of Community Workforce Housing can help reduce pressures on the valley-wide transportation system by providing housing opportunities for our local workforce in the Aspen Area, while reducing air quality impacts associated with a commuting workforce. CWH is also critical to a viable economy, and helps to ensure a vital, demographically diverse year-round community. At the same time, limited opportunities and funds mean we can’t build our way out of the housing problem, and we recognize that new CWH includes infrastructure costs ranging from transportation to government services, schools and other basic needs. Controlling growth and job generation can reduce the pressure to provide CWH.



Housing Policies

Policy Categories

I. SUSTAINABILITY AND MAINTENANCE

I.1. Community Workforce Housing (CWH) should have adequate capital reserves for maintenance and significant capital projects.

Collaborative Initiative

I.2. Deed-restricted housing units should be utilized to the maximum degree possible.

*Collaborative Initiative,
Work Program for APCA*

I.3. Deed-restricted housing units should be used and maintained for as long as possible, while considering functionality and obsolescence.

*Collaborative Initiative,
Work Program for APCA*

I.4. Provide educational opportunities to potential and current homeowners regarding the rights, obligations, and responsibilities of homeownership.

Collaborative Initiative

I.5. Emphasize the use of durable and environmentally responsible materials, while recognizing the realistic lifecycle of the buildings.

*Incentive Program,
Proposed Code Amendment*

II. PROGRAM IMPROVEMENTS

II.1. The housing inventory should bolster our socioeconomic diversity.

Community Goal

II.2. Community Workforce Housing (CWH) should be prepared for the growing number of retiring Aspenites.

*Community Goal, Work
Program for APCA*

II.3. Employers should participate in the creation of seasonal rental housing.

*Collaborative Initiative,
Incentive Program*

II.4. Employers who provide housing for their workers through publicly-owned seasonal rental housing should assume proportionate responsibility for the maintenance and management of the facility.

*Collaborative Initiative,
Incentive Program*

II.5. Redefine and improve our buy-down policy of re-using existing housing inventory.

Work Program for APCA

II.6. Eliminate the Accessory Dwelling Unit (ADU) program, unless mandatory occupancy is required.

Proposed Code Amendment

Housing Policies

Policy Categories

III. FISCAL RESPONSIBILITY

III.1. Ensure fiscal responsibility regarding the development of publicly-funded housing.

Collaborative Initiative

III.2. Promote broader support and involvement in the creation of non-mitigation Community Workforce Housing, including public-private partnerships.

*Collaborative Initiative,
Incentive Program*

IV. LAND USE & ZONING

IV.1. CWH should be designed for the highest practical energy efficiency and livability.

*Incentive Program,
Proposed Code Amendment*

IV.2. All CWH must be located within the Urban Growth Boundary.

Proposed Code Amendment

IV.3. Track trends in housing inventory and job generation to better inform public policy discussions.

Data Needs

IV.4. The design of new Community Workforce Housing (CWH) should optimize density while demonstrating compatibility with the massing, scale and character of the neighborhood.

Proposed Code Amendment

IV.5. The residents of Community Workforce Housing (CWH) and free-market housing in the same neighborhood should be treated fairly, equally, and consistently with regard to any restrictions or conditions on development such as parking, pet ownership etc.

Proposed Code Amendment

V. HOUSING RULES AND REGULATIONS

V.1. The rules, regulations and penalties of Community Workforce Housing (CWH) should be clear, understandable and enforceable.

Work Program for APCA

V.2. Ensure effective management of CWH assets.

Work Program for APCA

Parks, Recreation, Open Space & Trails

Vision

We believe in preserving and enhancing our enjoyment of and access to parks, recreational opportunities, open space, and trails.

Philosophy

Scenic views of the natural environment, easy access to public lands and a range of recreational opportunities are three of our greatest assets and the reasons many people choose to visit or make the Aspen Area their home.

We have made great strides in the acquisition of open space, in the improvement of our trail system and our recreational facilities. Future acquisition of open space should focus on the intrinsic value of open space, wildlife habitat, protection of scenic resources, recreational uses, trail connectivity and accessibility. Future trail expansion should connect existing trails to improve and maintain easy access to public lands and provide opportunities for the use of trails by commuters in both summer and winter.

As stated in the 2000 AACP: "Constant vigilance is required to ensure that (open space) is protected for its visual and recreational contribution to our community as well as for its immediate accessibility from all parts of town."

The City's extensive recreation programs and facilities have become a valuable community asset, and an integral part of our quality of life. These programs and facilities must be continually reassessed and revitalized to meet changing demographic needs and community desires.



What's Changed Since 2000

One of the most significant accomplishments since 2000 has been the acquisition of two major open space parcels: The 250-acre Smuggler Mountain property and the 845-acre Brush Creek (Droste) property, which completes a 2,500-acre Mountain Park that includes the City's Cozy Point Ranch and Aspen Mass open space properties. These acquisitions are the result of multi-jurisdictional collaborative efforts. Other major accomplishments since 2000, under the heading of Parks, Recreation, Open Space and Trails, include:

Parks

- Awarded CCASLA Award in 2002, 2003, 2005 and 2008
- The Rio Grande Skateboard Park
- Harmony Park
- Snyder Park
- Wagner Park playground and restroom
- Yellow Brick playground

Recreation

- Construction of the Aspen Recreation Center
- Artificial turf project at high school
- Community Campus playing fields
- New Golf Clubhouse and Championship Tennis Facility
- New irrigation system using treated effluent water at golf course, saving 60 million gallons per year
- Rated #1 Municipal Golf Course in Colorado, 2011
- Rated in Top 20 municipal golf courses nationally, 2009 and 2010
- Redesigned several holes with native landscaping, water features

Open Space

- Voter approved City Open Space Tax
- Established City Open Space + Trails Board
- Restored historic Ute Cemetery
- City Charter now requires replacement of open space with comparable parcel, by ballot election
- Established Youth Corps for Open Space management
- Established annual volunteer projects on open space maintenance
- Acquired river corridor properties: Mills Open Space, Aspen Mass, Holy Cross, James H. Smith and Anderson Park
- Adopted Smuggler Open Space Management Plan

Definitions

Active Park: An active park is a park parcel that has significant maintenance and usually contains a ball field, volleyball court, or flat area which can be used for programmed sporting events, special events and parties. Wagner Park, where Rugged Fest is held, is an example of an active park.

Passive Park: A passive park is either a park parcel that is maintained in its natural or native state with little or no maintenance or is a formal park parcel that has maintenance and irrigation but does not have programmed recreational capabilities. In either scenario these parcels may have benches and trails located within the parcel. The Jenny Adair Wetlands is an example of a passive park.



Examples of Passive and Active parks in the Aspen Area. The photo on above is the Jenny Adair Wetlands, a passive park, while the photo below is Wagner park, an active park.



Trails/Nordic

- Rio Grande Trail
- Built Cemetery Lane, Highlands, East of Aspen and Ajax trails
- Highway 82 pedestrian improvements
- Nordic Trail improvements at golf course
- County mill levy passed for Nordic funding
- Castle Creek underpass
- Tiehack Bridge
- Terrell/Wade Pedestrian Bridge

In addition, the Top of the Rockies National Scenic and Historic Byway added the 40-mile stretch from Twin Lakes to Aspen in 2008. Prior to this addition the Byway only extended from Minturn and Copper Mountain to Twin Lakes. The designation as a Scenic Byway recognizes the areas spectacular scenery, recreational opportunities, and rich history.

What's New in the 2011 AACP

There are no dramatic changes to the Vision, Philosophy and Policies in this chapter compared to the 2000 AACP. In fact, much of the wording remains the same. This is due largely to the long-term and unwavering support in the Aspen Area for Parks, Open Space and Recreation.

Some shifts in policy direction for the 2011 AACP include an emphasis on providing recreational opportunities that are "affordable." Another new policy is aimed at establishing undevelopable "buffer" areas alongside public trails to maintain and improve the recreation and scenic experience. Finally, there is an emphasis on trail acquisition and/or improvement that focuses on commuter trails and connectivity with the public transit system.

Linkages

Parks, recreation, open space, and trails are an integral part of our resort economy, providing opportunities to enjoy scenic views and an outdoor lifestyle, while preserving outlying rural environment and contributing to biodiversity. Potential conflicts may arise as other community priorities are considered for our remaining open lands.



Parks, Recreation, Open Space & Trails Policies

Policy Categories

I. PARKS

I.1. Acquire land for active and passive parks whenever possible.

*Community Goal,
Collaborative Initiative,
Work Program for Parks/
Open Space*

I.2. Maintain a balance between active recreational parks and passive parks.

*Work Program for Parks/
Open Space*

II. RECREATION

II.1 Provide affordable recreational opportunities for all ages and abilities.

*Community Goal,
Collaborative Initiative*

II.2. The Aspen Recreation Department should strive to be financially self-sustaining while still providing affordable, accessible, quality recreational opportunities.

*Collaborative Initiative,
Work Program for
Recreation*

II.3. Strive to integrate physical rehabilitation and adaptive recreation into Aspen Recreation Department facilities and programs.

*Work Program for
Recreation*

II.4. New recreational facilities should offset impacts regarding traffic and job generation and maintain the contextual character of the built environment.

Proposed Code Amendment

III. OPEN SPACE

III.1. Maintain and protect existing open space parcels.

*Community Goal,
Collaborative Initiative*

III.2. Acquire open space to preserve biodiversity, wildlife habitat, scenic value and to support trail connectivity and recreational activities.

*Community Goal,
Collaborative Initiative,
Work Program for Parks/
Open Space*

III.3. Continue to promote multi-jurisdictional collaboration for open space acquisition, acknowledging that open space and trail systems are regional assets that improve the region's quality of life.

*Community Goal,
Collaborative Initiative,
Work Program for Parks/
Open Space*

Parks, Recreation, Open Space & Trails Policies

Policy Categories

IV. TRAILS

IV.1. Acquire, improve and develop trail connections throughout the Aspen Area.

*Community Goal,
Collaborative Initiative,
Work Program for Parks/
Open Space*

IV.2. Encourage regional trail planning and multi-jurisdictional collaboration.

*Community Goal,
Collaborative Initiative*

IV.3. Increase opportunities for summer and winter trail commuting.

*Collaborative Initiative,
Work Program for Parks/
Open Space*

V. PUBLIC OUTREACH

V.1. Educate the public regarding our parks, open space, trails and recreational opportunities through maps, brochures, and on-line services.

*Collaborative Initiative,
Work Program for Parks/
Open Space and Recreation*

Environmental Stewardship



Vision

The Aspen Area will be a local, regional, state and national leader in all aspects of environmental stewardship.

Philosophy

As stewards of our environment and resources, it is our responsibility to balance human activity and the health of our natural environment. This ethic is our defining characteristic.

As stated in the 1993 and 2000 AACPs: "The natural environment is one of the community's greatest assets and the reason many people choose to visit or make the Aspen area their home." We aspire to be good stewards of the environment. We are committed to nurturing, sustaining, and protecting the environment, and believe in the urgency of these actions.

Some of our greatest environmental challenges include the various impacts of development, redevelopment and population growth, including:

- The treatment of run-off before it reaches riparian areas, a problem that is heightened when development occurs on steep slopes and in riparian areas.
- The generation of substantial amounts of demolition debris, a long-term problem due to strong trends towards residential redevelopment, and the impact on our limited landfill.
- Excessive energy consumption, including extensive snowmelting, outdoor pools/spas etc.
- Periods of high employment increase vehicle trips, which results in air pollution emissions and congestion.

We recognize the decisions we make today regarding our air, water, and land will have a significant impact on our future. As such, we are committed to making choices and implementing programs that ensure our environmental sustainability. We recognize that this ethos will influence decision-making as we consider basic municipal services such as snow removal, maintaining public parks and fields, and street-sweeping and cleaning, etc. We can also play a role in changing people's individual habits, from re-useable grocery bags to higher recycling rates and limiting the wasteful consumption of plastic bottles.

We continue to endorse the Ecological Bill of Rights, adopted by the City Council and Board of County Commissioners (please see sidebar on page 57).

What's Changed Since 2000

Since 2000, there have been a significant number of new programs and projects completed with a goal toward improving the environmental health of the Aspen community. Some of the highlights include:

- Continued improvement of the City and County Residential Energy Mitigation Program (REMP), which requires mitigation for energy consumption outside the home for of snow melt systems, pools/spas, etc.
- Continued City and County support of the Roaring Fork Transit Authority (RFTA), which saved 8,023 tons of CO₂ from being emitted into the environment in 2006.
- Reaching EPA PM-10 "attainment" status in 2003, after 15 years of devising and implementing strategies to improve air quality.
- Adopting the City's Canary Initiative in 2005 with a goal of educational outreach and aggressive reductions in our carbon footprint.
- Adopting the City's Waste Reduction/Recycling Ordinance in 2005, aimed at increasing the recycling rate, diverting yard waste from trash, and establishing a reporting system.
- Creating the ZGreen program in 2006, a City certification and outreach program designed to reduce the environmental impacts of Aspen's citizens, visitors, businesses, and events.
- Established a new taxing district in 2007, and adopting Urban Run-Off Management Plan in 2010 with the goal of treating stormwater run-off. Also, new development fees are being used to address run-off problems at construction sites, as part of the City's Clean River Initiative.
- Creating the Jennie Adair and Rio Grande Stormwater Management Projects in 2006. After six months of operation, this constructed wetlands project prevented 144 tons of sediment from discharging into the Roaring Fork River.
- Renovating the Recycling Center in 2010.

Definitions

ZGreen: A City certification and outreach program designed to reduce the environmental impacts of Aspen's citizens, visitors, businesses, and events.

PM-10: Small particulate air pollution including dirt, dust, and smoke. It is responsible for 60,000 deaths per year in the US.

Ozone: A gas that naturally occurs in the Earth's atmosphere. At ground level it is a pollutant caused by upwind emissions of pollutants from gas drilling and traffic.

Canary Initiative: In 2005, the city adopted the ambitious Canary Initiative that identifies Aspen and other mountain communities as the "canary in the coal mine" for global climate disruption (global warming / climate change). The goal is to aggressively reduce Aspen's carbon footprint to protect our community's future, and to contribute to global reduction of global warming pollution. Global climate disruption is caused by greenhouse gasses, which trap heat in the atmosphere. According to the EPA's US Greenhouse Gas Inventory, in 2006 carbon dioxide (CO₂) made up 80% of green house gas emissions in the United States. CO₂ enters the atmosphere through the burning of fossil fuels, solid waste and tree products.

Clean River Initiative: A City program dedicated to improving the water quality in the Aspen Area.

Deconstruction: The selective dismantlement of building components, specifically for re-use, recycling, and waste management. It differs from demolition where a site is cleared of its building materials by the most expedient means.

What's New in the 2011 AACCP

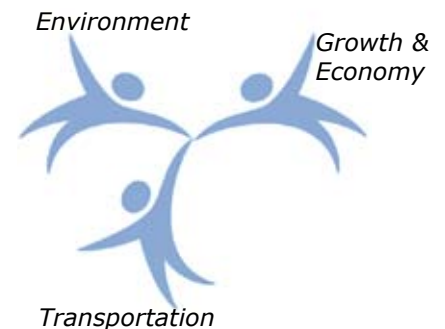
The 2000 AACCP combined the Environment, Parks and Open Space into one chapter. The 2011 update to the AACCP recognizes that Environmental Stewardship is of such importance that it should be highlighted in its own chapter.

The 2011 AACCP establishes a series of ambitious goals that are intended to elevate environmental stewardship to a new level during the next 10 years. They include:

- Reducing the Aspen Area's carbon footprint by 30% (to 588,612.5 tons CO₂-e) by 2020 (compared to 2004 levels).
- Reducing electricity and natural gas consumption in the Urban Growth Boundary by 15% (to 229,488.1 tons CO₂-e) by 2020 (compared to 2004 levels).
- Implementing the Clean River Initiative through additional wetlands design and construction at Rio Grande Park, including sub-grade treatment "vaults."
- Initiatives aimed at on-site treatment for run-off.
- Increasing the diversion of construction debris from the landfill, and moving towards recycling programs to help extending the life of the landfill.
- Substantially reducing our dependence on non-renewable energy.

Linkages

This community's commitment to responsible environmental stewardship has been evident for decades, and has evolved dramatically in recent years. Preserving the natural environment, scenic views and biodiversity are important to our attractiveness as a community and a resort. There will always be a need to strike a responsible balance between environmental protection and physical development. We also recognize the need to strike a balance between environmental stewardship and the manner in which we provide basic municipal services, ranging from street sweeping to managing snowy and icy winters.



Ecological Bill of Rights

The community adopted an Ecological Bill of Rights in 1989, which states the overall environmental philosophy for the Aspen Area:

- The right to breathe clean air and enjoy clear vistas.
- The right to the preservation of natural riparian areas and wetlands.
- The right to permanently protected minimum stream flows in rivers and creeks.
- The right to the preservation and restoration of native wildlife and plant diversity by preservation of sufficient habitat.
- The right to protection of designated wilderness through management of adjoining land in a way that preserves the integrity of the wilderness areas.
- The right to a landscape free of noxious and invasive weeds.
- The right of appropriate access to public lands on roads and trails historically open to the public, consistent with the nature and designation of the public lands.
- The right to dedicated open space protected from urbanization and development.
- The right to the efficient and renewable use of energy.
- The right to be free from excessive noise.
- The right to see the night sky without the interference of unnecessary artificial light from growth, urbanization and highway development.
- The right to the absolute minimum involuntary exposure to toxic chemicals, radioactive substances and energy forms that are hazardous to health.
- The right to maintain and not exceed the carrying capacity (sustainability) of the land and water, including protecting water quality.
- The right to expect from our government legislation and active enforcement of land use and development regulations consistent with this Ecological Bill of Rights.

Quote from: Haudenosaunee Environmental Restoration An Indigenous Strategy for Human Sustainability

Because of our strong sense of responsibility to the natural environment, we have brought forward and reprinted the Mohawk Nation strategy statement for human sustainability and interaction with the earth from the 2000 AACP - Parks, Open Space, and Environment Chapter. We believe the Aspen area should be guided by these principles as a community as the Mohawk are guided by them as a nation.

“The underlying philosophy among the Haudenosaunee is that in every aspect of our way of life, in our government, and with every decision that we make, we must always be of one mind and always make our decisions in consideration of the ‘Seven Unborn Generations.’ This centuries old Haudenosaunee philosophy reflects the importance of decision making and its effects upon the continuity of Haudenosaunee existence. From this philosophy comes a strong sense of responsibility for the earth and life upon it. The first game seen on the hunt is not harvested, the first berries are not picked, to make sure these gifts will always be there as a resource. The thought is that if you don’t pick the first, you won’t be the one to pick the last. The Haudenosaunee harvest only what can be eaten or used, and thanks is always given to the Creator for these bountiful provisions.”

“The Constitution of the Haudenosaunee Confederacy requires that lawmakers consider the effects of our decisions on the natural world, of which we are a part and for which we feel we bear special obligations. The duty of human beings and our governments toward the natural world leads the Haudenosaunee to treat the natural world with respect and protect it for the unborn generations.”

It is a major priority to see that our unborn generations are born into a world no worse than it is presently, and that the world’s condition will hopefully get better. When we walk on Mother Earth, we always plant our feet carefully because we know the faces of our future generations are looking up at us from beneath the ground. We never forget the seven unborn generations in any of our collective or individual decisions. Since the Seventh Generation will soon be walking the same earthy path as the Haudenosaunee do today, we try to ensure that our future children will have a path to walk, and that the path will be much better than the one we have walked upon.”

Reprinted with permission of the Mohawk Nation

No uses beyond those associated with the AACP may be made without permission from James Ransom, Director, Haudenosaunee Environmental Task Force, (518) 358-3381.

Environmental Stewardship Policies

Policy Categories

I. GREENHOUSE GASES

I.1. By 2020, reduce the carbon footprint of the Aspen Area from 2004 levels by 30% (to 588,612.5 tons CO₂-e).

Community Goal

I.2. All existing development and uses should minimize their greenhouse gas emissions.

Community Goal

I.3. Incentivize alternative forms of transportation to reduce reliance on fossil-fuels.

Incentive Program

I.4. All new development and uses should minimize their greenhouse gas emissions.

Proposed Code Amendment

II. AIR QUALITY

II.1. Improve air quality.

*Community Goal,
Collaborative Initiative,
Environmental Health Work
Program*

II.2. Achieve and maintain healthy ozone levels.

*Community Goal,
Collaborative Initiative,
Environmental Health Work
Program*

II.3. All existing development and uses should minimize their air pollution emissions.

Community Goal

II.4. All new development and uses should minimize their air pollution emissions.

Proposed Code Amendment

Environmental Stewardship Policies

Policy Categories

III. WATER

III.1. Maintain minimum instream flows for the Roaring Fork River and its tributaries.

Community Goal, Work Program for Water Department

III.2. Reduce the detrimental effects of diversions from the Roaring Fork River and its tributaries.

Work Program for Water Department

III.3. Maintain and preserve existing riparian habitat and wetlands.

Work Program for Planning Department, Proposed Code Amendment

III.4. Reduce the quantity of urban pollutants in stormwater runoff that discharge into the Roaring Fork River and its tributaries.

Work Program for Engineering, Proposed Code Amendment

III.5. Optimize the natural filtration of storm- and melt- water.

Work Program for Engineering, Proposed Code Amendment

III.6. Require new development to treat its stormwater runoff, with a preference for on-site.

Work Program for Engineering, Proposed Code Amendment

III.7. Encourage existing development to treat its stormwater runoff, with a preference for on site.

Work Program for Engineering

IV. WASTE MANAGEMENT AND REDUCTION

IV.1. Maximize recycling, implement waste reduction and environmentally-responsible purchasing programs, and encourage behavior that moves the Aspen Area toward being a zero waste community and extends the life of the landfill.

Community Goal Collaborative Initiative, Work Program for Environmental Health & Landfill

IV.2. Adequate funds should be available for environmental monitoring and eventual remediation of the Pitkin County Landfill.

Work Program for Landfill

IV.3. Minimize off-site snow storage.

Work Program for Planning, Engineering, Streets, and Environmental Health Departments

IV.4. Increase the practice of deconstruction and increase the amount of materials that are diverted from the landfill, reused or recycled.

Proposed Code Amendment

Environmental Stewardship Policies

Policy Categories

V. RENEWABLE ENERGY

V.1. Reduce our dependence on non-renewable energy sources and instill an ethic of energy accountability.

Community Goal

V.2. Continue to pursue efforts to establish an electric portfolio of 100% renewable energy.

Community Goal

V.3. By 2020, reduce electricity and natural gas consumption in the Urban Growth Boundary from 2004 levels by 15% (to 229,488.1 tons CO₂-e).

Community Goal

V.4. Require new development and redevelopment to minimize their energy usage and use on-site renewable energies as the site allows.

*Incentive Program,
Proposed Code Amendment*

V.5. Existing development should minimize their energy usage and use on-site renewable energies as the site allows.

Incentive Program

VI. WEED MANAGEMENT

VI.1. Ensure there is proper resource management to minimize the negative impacts of weeds on the Aspen Area.

Community Goal, Work Program for Parks and Open Space Departments

VII. WILDLIFE AND WILDLIFE HABITAT

VII.1. Sustain, protect and restore biodiversity and native ecosystems through land use planning, resource acquisition and best land management practices on public and private lands.

Community Goal, Collaborative Initiative, Work Program for Planning, Parks, and Open Space Departments, Proposed Code Amendment

VII.2. Elected and appointed Boards and Commissions should consider environmental and wildlife issues when making decisions.

Community Goal, Proposed Code Amendment

Historic Preservation



Vision

Historic preservation connects us to our heritage, enabling us to learn from and appreciate the stories and context of our past. Preserving our historic resources differentiates us as a community and contributes to our long-term cultural awareness and sustainability as a community.

Philosophy

Preserving the historic built environment is vital to our culture: We are all stewards of our history. We must consider what we hope to pass on to future generations. Through effective outreach and education, we strive to raise community awareness so that all of us feel responsible for the preservation of our history. While the overall goal of preservation is foremost, the process should be one of balance, predictability, fairness, consistency and integrity.

Preservation of historic structures, the historic town layout, landscapes, ditches in residential neighborhoods, and sites connect us to the people, patterns, and events that are the fabric of our town in a way that enriches our future. In preserving our history, we ensure our culture and legacy is imparted to future generations. A respectfully restored historic structure or site honors the history and culture of our town, whereas a demolished one erases a piece of the Aspen story forever.

We must build on what we have by authentically preserving historic structures and creating thoughtful new buildings that are compatible with that feeling of historical continuity. Sensitivity to mass, scale, and building proportions directly influence how people perceive our town. Our built environment reflects the character of our town's layering of history. By authentically preserving historic structures and creating thoughtful new buildings we achieve historical continuity. While allowing for creativity, new buildings must be sensitive to historic patterns.

What's Changed Since 2000

Over the past ten years, historic preservation policies have undergone significant changes.

In 2005, Pitkin County passed a significant revision to the Land Use Code providing for the voluntary protection of the important historic properties within the Urban Growth Boundary. These code provisions have been successful in encouraging historic preservation. In 2008 the County completed work on the Historic Preservation Handbook, which includes background information on the history of the County, a description of the incentives available to historic property

owners and a listing of good preservation practices.

In December 2006, the City Council established an emergency moratorium on building permits in the Commercial Core (CC) zone district while staff researched options on preserving the interiors of historically designated buildings. In December 2008, the City Council lifted the moratorium without taking specific action on the issue.

In July 2007, City Council placed temporary protections on post-war properties that might be worthy of preservation. There was extensive community discussion and debate about the appropriate protections for these resources. In January 2011, after hearing recommendations from a Historic Preservation Task Force, City Council approved changes to the Historic Preservation Program to recognize the importance of both Victorian and Modern (post-war) buildings. Referred to as AspenModern, the preservation of Modern or mid-century buildings is entirely voluntary, similar to the Pitkin County program, which requires owner consent for designation. AspenModern seeks to incentivize the preservation of important buildings representative of Aspen’s early ski era, its emergence as an intellectual center, and development as a ski town.

History of Preservation in the Aspen Area

The City of Aspen first took steps to preserve historic properties when the Main Street Historic District and the Commercial Core Historic District were established in the early 1970s. In addition, a handful of historic structures were designated as landmarks through the 1970s – but a more comprehensive approach was taken in the '80s and '90s when more than 200 historic properties were landmarked. The city currently has almost 300 properties that are designated historic.

What’s New in the 2011 AACP

There are no substantive differences in the 2011 AACP compared to the 2000 AACP. Historic Preservation continues to be an important community goal. One new policy calls for further exploring methods to preserve historically significant interiors in publicly accessible buildings.

Linkages

Historic preservation is an important element of the resort economy because it helps us to physically illustrate our cultural legacy, enabling us to “tell our story” to future generations. “Heritage Tourism” is a widely accepted positive element in attracting visitors. This economic development is an off-shoot benefit of historic preservation. Also, the preservation and maintenance of historically designated buildings is environmentally responsible compared to recent trends toward demolition and replacement. Historic preservation can include providing benefits to facilitate historic designation. Historic preservation is also aligned with our environmental ethic. Energy is saved by retaining existing structures and making them more efficient rather than demolishing the structure and building anew.



Historic Preservation Policies

Policy Categories

I. HISTORIC PRESERVATION EDUCATION

- I.1. Raise public awareness and appreciation for the many eras of Aspen's story.
- I.2. Improve public awareness and understanding of the City and County Historic Preservation Programs.

Collaborative Initiative

Collaborative Initiative

II. UPDATING THE HISTORIC PRESERVATION PROGRAM

- II.1. Ensure that city codes support the historic integrity of designated structures and ensure compatibility with the surrounding context in terms of site coverage, mass, scale, height and form. (See Managing Growth for Community & Economic Sustainability Policy IV.3)
- II.2. Ensure that the Historic Preservation Benefits Package encourages owners of landmark property to preserve structures to the highest possible degree of historic integrity while minimizing adverse impacts to the neighborhood.
- II.3. Encourage the use of the City's Historic Transferable Development Right Program (TDR) as a method of preserving the historic integrity of designated structures.

Work Program for Planning, Proposed Code Amendment

Work Program for Planning Department

Work Program for Planning Department

III. PUBLIC SECTOR

- III.1. The public sector should set an example as a responsible steward of preservation and adaptive re-use of historic buildings.

Work Program for Planning and Asset Management Departments

IV. PUBLICLY ACCESSIBLE INTERIORS

- IV.1. Explore code changes to preserve exceptional character-defining historic interiors in public buildings and publicly accessible buildings.

Proposed Code Amendment

Historic Preservation Policies

Policy Categories

V. REVIEW PROCESS & ENFORCEMENT

V.1. The Historic Preservation Commission's review process should be positive, productive and fair, with a high level of integrity, consistency and collaboration.

V.2. Routinely and fairly enforce property specific approvals.

Work Program for Planning Department and HPC

Work Program for Planning Department and HPC

VI. ENERGY EFFICIENCY

VI.1. All historic landmark properties should be maintained in a manner that improves energy efficiency while maintaining architectural integrity.

Proposed Code Amendment

The Lifelong Aspenite



Vision

We will strengthen the quality of life and well-being for all people in our community by providing or promoting opportunities in housing, jobs and access to services through all phases of life, from education to public safety and health.

Philosophy

Providing health and human services for anyone who calls the Aspen Area "home" is integral to the long term sustainability of our community. Local governments, non-profits and community groups have made progress in addressing the needs of the "Lifelong Aspenite," but gaps still exist in the provision of essential services, including adequate housing and health care options for all community residents. We value a collaborative approach to finding creative, sustainable solutions.

We are guided by professional, legal and community standards in providing opportunities for people of all ages and abilities to achieve a higher quality of life through:

- **Self-Reliance:** We must work together to help each person in our community meet his or her basic needs and remain self-sufficient to the greatest extent possible.
- **Public Safety:** We must continue to ensure that our safety services (police, sheriff, fire, child and adult protection, Mountain Rescue and emergency response, etc.) are efficient, effective, accessible and coordinated.
- **Health and Well-Being:** We must encourage the highest level of personal health for everyone in our community through programs that encourage healthy lifestyles, reduce risks, and create access to quality health care regardless of age, income or ability. Local and regional public health agencies, local boards of health, providers, and non-profits must work together to ensure community-wide access to a comprehensive set of health services.
- **Education and Lifelong Learning:** We must work together to ensure educational opportunities are available to all members of our community.

What's Changed Since 2000

The recent economic downturn has increased the demand for health and human services throughout the country, including here in Aspen. While demand has increased, funding sources have not been able to keep pace, and private philanthropy, state and federal funding has decreased.

This chapter identifies many programs and initiatives that will require funding into the future. Securing these sources will be an important part of implementing the policies in this chapter.

Aspen has the only dedicated sales tax funding early childhood education in the nation. Voters approved the sales tax in 1990, and re-authorized it in 2008. This sales tax funds over 90% of the costs to run Kids First, which provides childcare in the Aspen Area. The tax is set to expire in 2040.

Pitkin County voters approved a new property tax in 2002 to support the Healthy Community Fund, and voted to renew and increase revenues in 2006. The fund provides grants to area non-profits that support health and well-being in the community. In 2010, more than \$1.4 million was granted to 61 health & human service and community non-profit programs. The tax is set to expire in 2012 unless it is renewed again.

In 2010, Aspen Valley Hospital received approval to begin a facilities expansion. This is funded in part by a bond approved by voters in Nov 2010.

While City and County governments play an important leadership role in addressing the health and human services gaps and demands in service (as the local Boards of Health and with direct responsibility for Kid's First, Senior Services and the Healthy Community Fund) there are dozens of non-profits, taxing districts (such as Aspen Valley Hospital, schools, CMC) and other entities that provide health and human services. One of the primary goals of this new chapter is to bring a range of groups together to explore innovative and collaborative ways to provide health and human services to our community. This ethic of community and regional cooperation and collaboration enhances our quality of life.

Definitions

Community Health Impact Assessment: a process that measures health statutes and health risks of the population and the capacity of the public health system to meet those needs. It is a formal approach to identifying health needs and health problems in a community.

Board of Health / Local Public Health Agency: The 2008 Public Health Act requires local designation of Local Public Health Agencies to oversee public health priorities and services. In the Aspen Area the City Council and the Board of County Commissioners are each Local Public Health Agencies for their jurisdictions.

Self Sufficiency Standard: Measures how much income working families need to meet their basic costs without public or private assistance. It is calculated on a county-by-county basis, and includes all costs a working family has, including housing, child care, food, health care, transportation, and taxes.

Restorative Justice: An approach to justice where offenders are encouraged to take responsibility for their actions and "to repair the harm they've done" - by apologizing, returning stolen money, or (for example) doing community service.

Family Friendly: A variety of working practices designed to enable employees to achieve a satisfactory work-life balance.

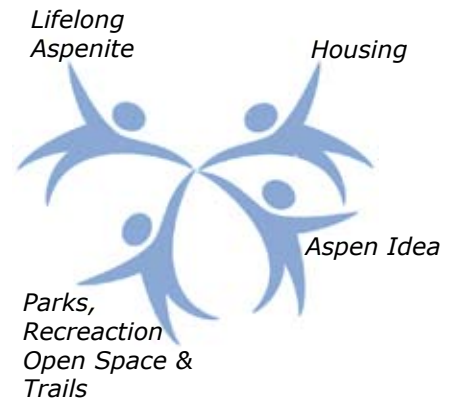
Healthy Family Functioning: Healthy families promote the emotional, physical and social welfare of individual family members. Among the many factors that contribute to this process are a family's internal strengths and the durability of the family unit.

What's New in the 2011 AACCP

For the first time, the Aspen Area Community Plan includes a chapter that highlights the services needed to help nurture and support a healthy community. While past community plans have promoted a high quality of life through growth management tools, affordable housing policies, environmental programs, and transportation initiatives, they have not comprehensively addressed the health and human services needed to support our community. This chapter focuses on the sustainability of our entire community through health, safety, and economic and family services.

Linkages

Our success in creating affordable housing and a demographically diverse year-round community has resulted in increased needs for services related to health, education and safety. Creating job, volunteer, and educational opportunities that support our economy will help ensure the community continues to support the Lifelong Aspenite. Our affordable housing program is critical to the success of ensuring future generations are able to call Aspen home.



The Lifelong Aspenite Policies

Policy Categories

I. SELF-RELIANCE

- I.1. Ensure that affordable, accessible high quality childcare is available for all families who need it.
- I.2. Encourage businesses to adopt family-friendly employment policies.
- I.3. Promote self-sufficiency and self-reliance through coordinated, comprehensive and sustainable programs.
- I.4. Expand the opportunity for safe and healthy housing for those in need, including older adults, people with disabilities, and low-income populations.
- I.5. Ensure that all community members have access to all public assistance programs for which they qualify.

Community Goal

Collaborative Initiative

*Collaborative Initiative,
Work Program for Health
and Human Services*

*Work Program for Health
and Human Services*

*Work Program for Health
and Human Services*

II. PUBLIC SAFETY

- II.1. Ensure a safe community.
- II.2. Ensure a safety net exists for all at risk Aspen Area residents, visitors and workers.
- II.3. Reduce juvenile and adult crime.

Community Goal

Community Goal

*Work Program for Health
and Safety Agencies*

The Lifelong Aspenite Policies

Policy Categories

III. HEALTH AND WELL-BEING

III.1. Promote community-wide collaboration to address health and social service needs throughout the community and in association with new development.

Community Goal, Work Program for Health and Human Services, Proposed Code Amendment

III.2. Ensure that a comprehensive health care system exists and that the community is aware of the system.

Community Goal, Collaborative Initiative

III.3. Ensure that residents have access to primary care including prevention, palliative care, long-term care and health maintenance services, regardless of payer source.

Community Goal, Collaborative Initiative

III.4. Ensure that residents of all ages and abilities have access to a comprehensive mental health and substance abuse system that addresses acute and chronic mental health needs.

Community Goal, Collaborative Initiative

III.5. Ensure that all residents have access to a comprehensive dental program.

Community Goal, Collaborative Initiative

III.6. Promote healthy family functioning.

Collaborative Initiative

III.7. Promote and provide access to organic and sustainable local and regional food production.

Community Goal, Collaborative Initiative

IV. EDUCATION AND LIFELONG LEARNING

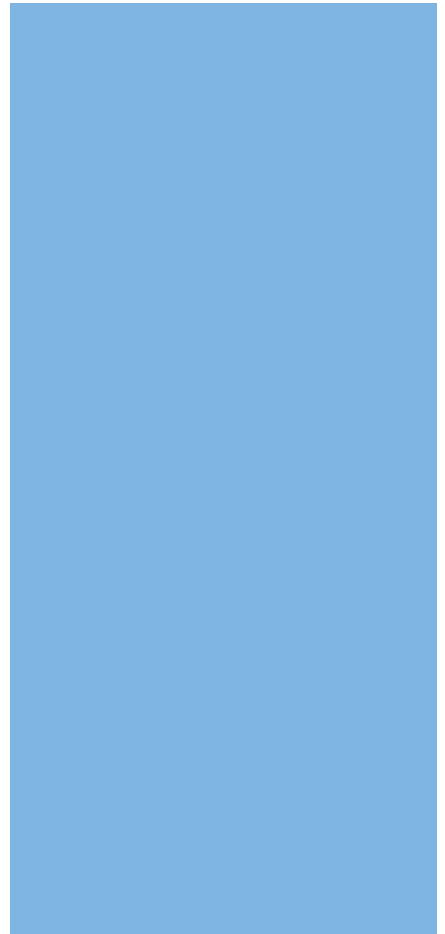
IV.1. Ensure all residents have access to local educational opportunities.

Community Goal, Collaborative Initiative

AACP Appendix

Action Items

Aspen Idea	4
Managing Growth For Community & Economic Sustainability	6
West of Castle Creek Corridor	15
Transportation	17
Housing	25
Parks, Recreation, Open Space & Trails	30
Environmental Stewardship	33
Historic Preservation	40
The Lifelong Aspenite	43
Population Segment Chart	49



Appendix

Implementation Steps

The Implementation Steps represent a set of suggested tools to implement the Vision, Philosophy, and Policies. They are in no way an exhaustive list of everything that could be done to further community goals, but they provide a possible road map toward implementing the community’s shared vision and philosophy. The policies are re-printed in the Appendix with a list of the associated Implementation Steps.

Each Implementation Step identifies a department or agency that the Planning & Zoning Commissions felt could be responsible for the implementation of the Implementation Steps. In addition, the Planning & Zoning Commissions identified a suggested time frame for each Implementation Step: “immediate” (I), or “long-term” (LT). Each Action Item also includes the entities that are responsible for implementing the plan. The list on the following page identifies the entities referenced in the plan.

Below is an example of how to read the Implementation Steps.

Each chapter includes a number of Policies that are divided into sections, identified by a band of color. Public Outreach is the first section in Parks, Recreation, Open Space & Trails. Each section is labeled with a roman numeral, in this case V.

*This is the first Policy under the Public Outreach policy section. Each Policy is numbered based on policy section, in this case **V.1**. All policies are in **Bold**.*

Parks, Recreation, Open Space & Trails Policies and Implementation Steps

V. PUBLIC OUTREACH

V.1. Educate the public regarding our parks, open space, trails and recreational opportunities through maps, brochures, and on-line services. (Collaborative Initiative, Work Program for Parks/Open Space and Recreation)

V.1.a Update and adopt the biodiversity and wildlife map that is in the 2000 AACP to ensure our wildlife resources are identified and protected. (I – P/OS, P)

V.1.b Create a Comprehensive Map and Inventory of all parks, trails, open space properties, land trust properties, conservation easements and fishing easements within the Urban Growth Boundary. (LT – P/OS)

This Implementation Steps is identified as an Immediate (“I”) Action Item, and Parks/Open Space and Planning Staff (“P/OS, P”) are listed as the responsible departments.

This Implementation Steps is identified as a Long Term (“LT”) Implementation Step, and Parks/Open Space Staff (“P/OS”) is listed as the responsible department.

Entities Referenced in the Plan

A – Airport
 ABC Group – Airport Business Center Neighborhood Group
 ACRA – Aspen Chamber Resort Association
 AO – City Attorney’s Office
 APCHA – Aspen/Pitkin County Housing Authority
 ARD – Aspen Recreation Department
 Aspen K-12 – Aspen School District
 Asset – City Asset Department
 AVH – Aspen Valley Hospital
 B – Building
 CDOT – Colorado Department of Transportation
 CI – Canary Initiative
 City Manager – City Manager’s Office
 CMC – Colorado Mountain College
 County Manager – County Manager’s Office
 CR – City and County Community Relations
 EH – Environmental Health
 EOTC – Elected Officials Transportation Commission
 E/SW – Engineering and Stormwater
 Fire – Fire Department
 HHS – Health and Human Services
 HPC – City Historic Preservation Commission
 KF – Kids First
 L – Landfill
 LE – Law Enforcement
 LPHA – Local Public Health Agencies / Boards of Health
 LM – County Land Management Department
 P – Planning
 PH – Public Health
 P/OS – City and County Parks and Open Space Departments
 PW – County Public Works Department
 RFTA – Roaring Fork Transit Authority
 SE – Special Events
 SkiCo – Aspen Ski Company
 SrS – Senior Services
 Streets – City Streets Department
 T – City Transportation Department
 U – City Utilities

Population Segment Chart

A chart listing the various segments of the Aspen Area’s population is located in the Appendix. This chart tracks changes in each segment since the 2000 AACP, and was used by the Planning and Zoning Commissions during their review of the AACP.

Aspen Idea Policies and Action Items

I. REVITALIZING THE ASPEN IDEA

I.1. Support education efforts about, and encourage local and visitor participation in, the Aspen Idea. (Community Goal, Collaborative Initiative)

I.1.a Research the historical roots of the Aspen Idea and establish an educational program, including on-line programming, to help rediscover and revitalize the original concept. (I – Aspen Institute, Aspen Historical Society, local organizations, CR)

I.2. Encourage collaboration among non-profit organizations, local government, local businesses, and individuals. (Community Goal, Collaborative Initiative)

I.2.a Explore a working group to promote collaboration and coordinate planning. This working group could be identical to, or related to, the working group referenced in Managing Growth for Community & Economic Sustainability Action Item I.4.b. (Achieving Community & Economic Sustainability). Its mission could include the following concepts, as well as many others:

- i - Coordinate special events so they are balanced throughout the winter and summer seasons.
- ii - Collaborate to create experiences that embody the Aspen Idea through a range of activities that balance the mind, body, and spirit.
(I – Working Group, ACRA, SkiCo, City of Aspen, Red Brick etc.)

I.3. Foster greater inclusivity and participation in cultural events from within the spectrum of community residents and visitors. (Community Goal, Collaborative Initiative)

I.3.a Establish and leverage a comprehensive, user-friendly, web based calendar / resource to facilitate dissemination of information and schedules of events. (I – ACRA)

I.3.b Make arts and culture, including live programming, visible in the streetscapes and landscapes of the community. (I – City Manager, County Manager, local organizations)

I.4. Support and encourage activities and community infrastructure, both social and physical, that enable and sustain the Aspen Idea. (Community Goal, Collaborative Initiative)

I.4.a Encourage recreational and cultural programs that support personal growth, enhance family relationships and encourage civic involvement. (LT- Community non-profits, CR, City Manager, County Manager)

I.4.b Create incentives for alcohol free, family friendly community events (LT- Special Events)

Aspen Idea Policies and Action Items

II. FACILITIES

II.1. Maintain the legacy of the Aspen Idea by enhancing and preserving our non-profit and quasi-public facilities and spaces and ensuring that development of new facilities is consistent with community goals , including:

- use by a diverse range of people;
- collaboration with other groups;
- programs that reach outside the facility itself and into the public realm;
- meaningful and affordable local participation in programs and offerings;
- encouraging local talent;
- an emphasis on renovation and adaptation of current structures;
- multi-purpose space; and
- use of reusable materials and renewable energy in its design and construction.

**(see also Managing Growth for Community & Economic Sustainability Chapter)
(Community Goal, Collaborative Initiative)**

II.1.a Explore amendments to the City and County Land Use Codes to implement the policy. (I - P, City Manager, County Manager, non-profit groups, etc)

II.1.b Explore community partnerships, amendments to the City and County Codes, and other methods to prevent the conversion of civic or non-profit facilities to private use. (I - P, City Manager, County Manager, non-profit groups, etc)

Managing Growth for Community & Economic Sustainability Policies and Action Items

I. ACHIEVING COMMUNITY & ECONOMIC SUSTAINABILITY

I.1. Achieve sustainable growth practices to ensure the long term viability and stability of our community and diverse tourist-based economy. (Community Goal, Work Program for Planning)

I.1.a Explore revisions to the Growth Management Quota System (GMQS) to include quotas for residential demolition and replacement. (I – P, AO)

I.1.b Explore expanding the GMQS objective points system for all development that encourages community benefits. (I – P, AO)

I.1.c Update the GMQS to reflect latest job generation and mitigation studies (see Mitigating Impacts Action Items in Section VIII). (I – P)

I.1.d Examine City and County codes to ensure they reflect the ideals articulated in the plan. (LT – P)

I.2. Ensure there is on-going economic analysis of the Aspen Area economy that uses a consistent metric and provides broad community understanding of the economy. (Community Goal, Data Gathering)

I.2.a Establish a routine process and consistent metric to ensure an on-going economic analysis of our economy is conducted. The analysis should take a holistic approach, including analysis construction, job generation, business/economic sectors, etc. (I – P)

I.3. Explore and evaluate qualitative improvements to the Aspen area's tourist-based economy, that address the interests of future generations. (Community Goal, Collaborative Initiative)

I.3.a Proactively promote a diversity of community events, activities, and experiences that broaden the area's attractiveness as a destination and draw new visitors. (LT - P)

I.3.b Explore the creation of an "Aspencorps" that would draw visitors to learn new skills and volunteer their time in the Aspen community and connect to the community. (LT- P)

I.3.c Explore the creation of a coordinated, attractive signage program that promotes way finding & safety. (LT - P)

I.4. Identify opportunities to reduce the "boom-bust" nature of the economy. (Community Goal, Collaborative Initiative)

I.4.a Explore opportunities to diversify the economy and address "boom-bust" cycles. (LT – community groups, CM)

I.4.b Establish a collaborative working group including major institutions, the public sector, ACRA, the retail sector, the SkiCo and larger lodges, to develop a community-wide strategic resort analysis and plan to maintain sustainability for the tourist economy. (LT – P, ACRA, etc)

I.4.c The working group should conduct market research and brand development, including examining what other resort communities are doing to attract visitors. (I – P, SE)

I.4.d The working group should conduct periodic analyses of our competitive advantages and disadvantages, and then explore ways to ensure that resort amenities appeal to visitors. (LT - P)

I.5 Through good land use planning and sound decision making, ensure that the ultimate population of the Aspen Area does not degrade the quality of life for residents and the enjoyment of visitors. (Community Goal)

I.5.a Explore amendments to the Land Use Code that address the policy. (LT - P)

I.6 Maintain a UGB to ensure development is contained and sprawl is minimized. (Community Goal)

I.6.a Revise the Land Use Codes to require any amendments to the UGB should consider how it will increase or decrease sprawl. (LT - P)

I.7 Urban densities should be located within the commercial core of Aspen, and appropriate increases in density should only occur if they result in the preservation of land in the proximity of the UGB through TDRs or other land use tools. (Community Goal, Proposed Code Amendment)

I.7.a Explore the use of County TDRs in the City. (I - P)

I.7.b Amend the Land Use Code as necessary to implement the policy. (I - P)

I.8. Establish lower maximum building heights to maintain Aspen's small town character. (Community Goal, Proposed Code Amendment)

I.8.a Amend zoning, the Commercial Design Guidelines, Residential Design Guidelines, and Historic Design Guidelines as needed to implement the policy. (I - P)

I.9. Our public policies should be informed by reliable data on population segments and their impacts. (Data Gathering)

I.9.a Use Population Segment Chart as a starting point for tracking population data in the Urban Growth Boundary. Require yearly updates to be included in City and County Annual Reports. (I - P)

I.9.b Project growth/decline in future population segments by using Population Segment Chart, build-out studies, job generation estimates, Census tracking and State Demographer's Office reports. (LT - P)

I.9.c Ensure there is a reliable method for tracking all new square footage and redeveloped square footage, by use. Require yearly updates to be included in City and County Annual Reports. (I - P)

II. RESIDENTIAL SECTOR

II.1. Protect the visual quality and character of residential neighborhoods by reducing site coverage. (Proposed Code Amendment)

II.1.a Amend City and County codes to reduce allowable site coverage and create Residential Design Standards customized by neighborhood. (I - P)

II.1.b Explore amending the code to the potential of form-based design standards, and volumetric floor area calculations. (I - P)

II.1.c Study development in historic town-site areas of Aspen and other similar mountain communities in order to create standards that preserve visual quality and character. (I - P)

II.1.d Amend the County code to establish a sliding scale FAR for substandard size parcels in the AR-10 zone. (I - P)

II.1.e Amend the City and County codes to reduce FAR exemptions for items such as sub-grade space and garages. (I – P)

II.2. Control the location and limit the size of homes in order to:

- **Protect the natural visual quality and scenic value of river corridors and mountainsides, while also preventing environmental degradation and protecting water quality;**
- **Protect our small town community character and historical heritage;**
- **Limit consumption of energy and building materials;**
- **Limit the burden on public infrastructure and ongoing public operating costs;**
- **Reduce short- and long term job generation impacts, such as traffic congestion and demand for community workforce housing;**
- **Limit zoning variances to reduce impacts on the neighborhood and the community; and**
- **Limit site coverage.**

(Proposed Code Amendment)

II.2.a City and County Planning and Zoning Commissions should jointly and comprehensively examine and improve the following code regulations:

- i - City 8040 Greenline regulations
- ii - City and County slope requirements (FAR, Density)
- iii - City and County Stream Margin Review
- iv - County site plan review on slopes
- v - County scenic review (I - P, P/OS, AO)

II.2.b Explore prohibiting development on slopes of 30% or greater. (I - P, AO)

II.2.c Amend City and County codes to address proper location and solar orientation of homes. (I - P, B, CI)

II.2.d Expand and strengthen the County's scenic view protection standards, especially along roads such as Highway 82 toward Independence Pass, up Castle Creek Road, and up Maroon Creek Road, to limit the visual impacts of growth. (I - P)

II.3. Ensure City and County codes are consistent in the vicinity of city/county boundaries to prevent shifts in the character of neighborhoods, and encourage smoother cross-boundary transitions regarding house size. (Proposed Code Amendment)

II. 3.a Amend City and County codes to implement the policy, including a smoother transition in house sizes from the city to the county. (I - P)

II.3.b Establish an Inter-Governmental Agreement regarding annexation policy in the area within the Urban Growth Boundary. (I - P)

II.3.c Explore mechanisms for a joint review of development in the Urban Growth Boundary. (I - P)

II.3.d Amend City and County codes to make variance criteria more stringent in order to limit the impact of those variances on neighborhoods. (I – P)

II.4. Ensure that the County and City Transferable Development Rights (TDR) programs continue to effectively preserve backcountry areas/agricultural lands, and historic structures, respectively. (Work Program for Planning, Proposed Code Amendment)

II.4.a Evaluate the City and County TDR programs to ensure they are serving a valuable public purpose. (I – P)

II.4.b Ensure the viability of the County's Transferable Development Right (TDR) program. Scope of work would include:

- i - Estimate future TDR supply;
- ii - Review potential adjustments such as reducing the FAR awarded for a TDR, to ensure adequate demand;

iii - Explore a sliding FAR scale for TDR value based on scenic or other resources related to the sending site;

iv - Explore potential for inter-jurisdictional TDR exchange between County and City;

v - Explore other possible uses for TDRs on receiving sites (aside from FAR). (I - P)

II.4.c Explore a new square footage buy-back program, such as a Purchase of Development Rights (PDR) program or a conservation easement approach, for projects that are vested for more than 5,750 square feet to encourage owners not to exceed that size. (LT - P)

II.4.d Explore expanding the City and County TDR Programs to address additional community goals, including incentivizing locally-serving commercial spaces and moderately sized lodging. (LT - P)

III. LODGING SECTOR

III.1. Minimize the further loss of lodging inventory. (Community Goal, Collaborative Initiative, Proposed Code Amendment)

III.1.a Explore amending the City Code to eliminate the provision for new multifamily free market residential as the sole use on a parcel in the Lodge Zone District. (I - P)

III.1.b Explore allowing the conversion of existing multi-family free-market buildings to lodging uses. (I - P)

III.1.c Explore amending the City and County Land Use Codes to eliminate the provision of free-market residential incentives in the lodge program. (I- P)

III.1.d Explore amending the City and County Land Use Codes to limit the ability to convert lodging to other uses. (I - P)

III.2. Replenish the declining lodging base with an emphasis on a balanced inventory, and diverse price points. (Community Goal, Proposed Code Amendment)

III.2.a Update the City and County lodging database including information on size, age, bed base, and amenities provided. (I - ACRA, SkiCo)

III.2.b Identify and describe a desirable mix of lodging inventory and use this desired balance to recommend product type for new lodging development with a goal of establishing a balanced inventory. (I - P, ACRA, SkiCo, SAS)

III.2.c Explore methods to maintain the inventory of smaller lodges. (I- P)

III.2.d Explore the potential for incentives to encourage voluntary deed restricted economy/moderate lodging. (I - P)

III.2.e Explore amending the City and County codes to allow for bed and breakfast-type lodging in residential neighborhoods. (LT - P)

III.2.f Amend City codes to allow for flexibility in lodging unit sizes and configurations that can respond to seasonal and economic change. (I - P)

III.2.g Explore potential public/private partnerships to produce economy/moderate lodging. (I - P)

III.3. Lodging amenities should be designed to facilitate interaction between visitors and residents. (Community Goal, Proposed Code Amendment)

III.3.a Amend the City and County Land Use Codes and design guidelines to incentivize publically accessible, on-site amenities be conveniently accessible and welcoming to both visitors and residents. (I - P)

III.3.b Encourage a diversity of lodging amenities between lodges to ensure a balance within the community. (I - P)

III.4. Zoning and land use process should result in lodging development that is compatible and appropriate within the context of the neighborhood, in order to:

- **Create certainty in land development;**
- **Prioritize maintaining our mountain views;**
- **Protect our existing lodges;**
- **Protect our small town community character and historical heritage;**
- **Limit consumption of energy and building materials;**
- **Limit the burden on public infrastructure and ongoing public operating costs; and**
- **Reduce short- and long term job generation impacts, such as traffic congestion and demand for community workforce housing.**

(Community Goal, Proposed Code Amendment)

III.4.a Use the City's 3-D model of the downtown area to illustrate the maximum development that could result from the City's existing zoning and Lodging & Commercial Design Guidelines. (I - P)

III.4.b Amend zoning and the City's Lodging & Commercial Design Guidelines based on the findings of III.4.a if necessary to ensure compatible and appropriate development. (I - P)

III.4.c Explore the creation of new solar and view easements. (I - P)

IV. COMMERCIAL SECTOR

IV.1. Encourage a commercial mix that is balanced, diverse, vital, and meets the needs of year-round residents and visitors. (Community Goal, Collaborative Initiative)

IV.1.a Conduct a Market Study to identify the aggregate retail demand of local residents and determine whether there are adequate local-serving businesses to meet that demand, and if there are types of business are over-represented in the downtown and consider a system to manage imbalances, such as quotas, limited prohibitions, zoning, etc.. (I - P)

IV.1.b Explore incentives, such as Growth Management, for the use of non-prime commercial space including basements, 2nd floors and alleys. (I - P)

IV.1.c Explore amending zoning to encourage locations for products and services identified as needed in the Market Study outlined in Action Item IV.1.a. (I - P)

IV.1.d Explore creating a program to encourage limited use commercial spaces, which would be charged lower rents or rental rates based on percentage of sales. (I - P)

IV.1.e Explore adopting an Existing Use Zone District in specific areas in order to prohibit new uses from displacing existing ones. The new Zone District might allow a limited list of commercial uses subject to a conditional use process. (I - P)

IV.1.f Explore the potential to use public sector or non-profit owned commercial spaces to implement policy. (I - P)

IV.2. Facilitate for the sustainability of essential businesses that provide basic community needs (Collaborative Initiative, Incentive Program, Work Program for Planning)

IV.2.a Identify products and services that are considered basic community needs. (I - P)

IV.2.b Create an inventory of existing essential commercial uses and businesses and explore measures to keep them viable. (I - P)

IV.2.c Establish a working group including representatives of City, ACRA, Aspen Retail Association, CCLC and other groups or individuals to reach out to property/business owners who provide essential products in an effort to explore succession planning, including cooperatively owned stores. (LT - P)

IV.3. Ensure that the City code supports innovative development that respects our architectural heritage in terms of site coverage, mass, scale, form and a diversity of heights, in order to:

- **Create certainty in land development;**
- **Prioritize maintaining our mountain views;**
- **Protect our small town community character and historical heritage;**
- **Limit consumption of energy and building materials;**
- **Limit the burden on public infrastructure and ongoing public operating costs; and**
- **Reduce short- and long term job generation impacts, such as traffic congestion and demand for community workforce housing.**

(Work Program for Planning, Proposed Code Amendment)

IV.3.a Generate development scenarios using 3-D modeling to test whether Commercial Design Guidelines and Historic Preservation Guidelines would implement the policy. (I - P)

IV.3.b Amend the Commercial Design Guidelines, Historic Design Guidelines and zoning as needed to implement the policy. (I - P)

IV.3.c Re-evaluate the assumptions behind the Infill codes, such as what is the appropriate historic pattern of development to model. (I - P)

IV.3.d Engage in a community dialogue about the appearance and function of the commercial zone districts and amend our codes to reflect the community will. (I - P)

V. PUBLIC, INSTITUTIONAL, AND NON-PROFIT SECTOR

V.1 Zoning and land use process should result in public, institutional, and non-profit development that is appropriate and respectful within the context of the neighborhood, and should clearly reflect its use. (Community Goal, Proposed Code Amendment)

V.1.a Amend zoning, the Commercial Design Guidelines, and Historic Design Guidelines as needed to implement the policy. (I - P)

V.1.b Explore changes to the land use review process as needed to implement the policy. (I - P)

V.1.c Generate development scenarios using 3-D modeling to test whether Commercial Design Guidelines and Historic Preservation Guidelines would implement the policy. (I - P)

V.2. Public sector development should be a model for the ideals reflected in this plan, and should comply with the land use code. (Community Goal)

V.2.a Explore methods and projects that enable the City and County to model the ideals set forth in this plan. (LT - CM)

V.2.b Amend the Land Use Code as needed to implement the policy (I - P)

V.3. Preserve and enhance our non-profit and quasi-public facilities and spaces. (see also Aspen Idea Chapter) (Collaborative Initiative)

V.3.a Address the future loss of civic buildings and spaces through a variety of methods including public-private partnerships. (I - P, City Manager, County Manager, non-profit groups, etc)

V.3.b Explore community partnerships, amendments to codes, and other methods to ensure the continuation of publicly-accessible spaces used and/or owned by non-profits, institutions and civic organizations. (I - P, City Manager, County Manager, non-profit groups, etc)

V.3.c Explore the creation of a multiple-use community gathering place that serves as a hub for activities. The center should be easily accessible and close to complimentary community amenities. (LT – SrS, non-profit groups)

V.3.d Explore the creation of new open air, or quasi-pedestrian “market places” that utilize public spaces. (LT – City Manager, P)

V.3.e Explore establishing a highly visible and central visitor welcome and information center to provide visitors with information on activities, attractions, businesses, and lodging in the area. (LT – ACRA, P)

V.3.f Encourage adaptable use of public spaces, including downtown streets, for events. (LT- P)

V.4. New or expanded non-profit facilities in the UGB should be located within the City limits, excepting non-profits with missions that reflect rural values and activities. (Proposed Code Amendment)

V.4.a Examine the Pitkin County code to ensure it implements this policy and amend the code accordingly. (I – P)

VI. MITIGATING IMPACTS

VI.1. Quantify all impacts that are directly related to new development. (Community Goal, Work Program for Planning)

VI.1.a Conduct a comprehensive review and study of all impacts resulting from new development. (I - P)

VI.1.b Explore amendments to the Municipal Code to capture impacts. (I – P, AO)

VI.2. Ensure that new development and redevelopment mitigates all reasonable, directly-related impacts. (Work Program for Planning & APCHA, Proposed Code Amendment)

VI.2.a Conduct a comprehensive review of all mitigation options. (I - P)

VI.2.b Review the effectiveness of existing impact fees in the City and County with regard to schools, parks, roads, Transportation Demand Management, stormwater, etc, and revise as necessary. (LT - P, AO)

VI.2.c City and County shall conduct an updated study on short and long-term job generation impacts of both part and full-time residential development. The study should account for different job generation rates based on property types and neighborhoods, e.g. downtown condos, West End, larger county properties, and should be updated as needed. (I - P, APCHA)

VI.2.d Create a “mitigation menu” based on the job generation study, including:

i - Incentivize the provision of on-site community workforce housing. This could include prioritization in receiving a building permit, points in growth management, and other tools. (I – P)

ii - Recalculate City and County cash-in-lieu payment amount to reflect the job generation study, as well as all actual costs of providing off-site community workforce housing, such as the soft costs of locating developable property, planning, designing, conducting the appropriate public processes, identifying buy-down properties, etc, as well as the traditional hard costs of construction (I - P, APCHA)

iii - Consider establishing an official list of deed-restricted housing projects and potential buy-down properties that developers could buy into to mitigate their community workforce housing impacts. (I - P, APCHA)

iv - Explore public-private partnerships to create community workforce housing. (I - P, APCHA)

v - Consider amending the County code to allow for the creation of housing credits that developers can buy for their own mitigation. (I - P)

VI.2.e The City should examine the County's fee/mitigation policy regarding Resident-Occupied (RO) homes and consider changes to City codes. (I - P, APCHA)

VI.2.f Explore an impact fee dedicated to capital improvements for health and human services. (I - P, HHS, PH)

VI.3. Allow abatements in mitigation for certain types of development that provide significant community benefits and are in the public interest. (Community Goal, Proposed Code Amendment)

VI.3.a Explore the creation of a partial exemption process if clearly defined community benefits are provided. If a partial exemption process is pursued, consider a minimum threshold of required housing mitigation. (LT - P, APCHA)

VI.3.b Define Significant Community Benefits. (I - P&Z, APCHA)

VI.3.c Develop and codify review standards that allow the mix of on-site versus off-site community housing to be evaluated objectively based on the community housing benefits list. (LT - P)

VI.3.d Explore amendments to the City and County codes to:

i - ensure, to the greatest extent possible, the categories of housing mitigation / cash-in-lieu fees match the income level of the jobs created by the development.

ii - require housing mitigation to be provided prior to or concurrent with the development that generates it.

iii - ensure that public sector projects are subject to housing mitigation requirements. (I - APCHA, P)

VI.4. Develop better methods to manage adverse construction impacts, including a construction pacing system that respects quiet enjoyment of our community and neighborhoods. (Community Goal, Proposed Code Amendment)

VI.4.a Review the effectiveness of recent construction management plan codes and expand and improve as needed to address policy. (I - P, E)

VI.4.b Explore methods of amending and coordinating City and County codes to pace the level of construction activity on an annual basis. (I - P)

VI.4.c Explore amending codes to include residential demolition and replacement ("scrape and replace" development) in the pacing system. (I - P) (see action item I.1.b)

VI.4.d Explore not pacing certain types of development, including community workforce housing, conversion of free-market housing to community workforce housing, and projects that apply for a building permit and act on it within one year of a development order. (I - P)

VI.4.e Explore generating an objective list of community benefits through which an applicant may earn "points" under a pacing system to gain preferential treatment, such as being moved toward the "head of the line." As an example, preferential treatment could be awarded for construction associated with older homes that have not undergone significant redevelopment to date. (I - P)

VI.4.f Explore a percentage square footage increase that is allowable per year. (I - P)

VI.4.g Explore the role of vested rights as a tool in a pacing system. (I - P, AO)

VI.4.h Explore a "target" year, determined to be acceptable in terms of construction activity, to be used as baseline for a building permit cap. (I - P)

VI.4.i Where development quotas have been restricted to address inadequate infrastructure, explore allowing the restriction to “sunset” at such time as specific infrastructure improvements or other accomplishments have been made to ensure improved quality of life. (LT – P)

VII. REVIEW PROCESS

VII.1. Restore public confidence in the development process. (Community Goal, Collaborative Initiative)

VII.1.a Amend the land use codes to create a greater expectation of certainty and predictability in the review process. (I – P)

VII.1.b Create a publicly accessible UGB-wide 3-D model that shows what development is permitted under the land use codes. (I – P)

VII.1.c Amend the PUD regulations to address the placement of allowable mass and scale, rather than using the process to exceed underlying dimensional requirements. (I – P)

VII.1.d Amend City and County codes to establish an absolute height limit that can be achieved through a PUD or other process. (I – P)

VII.2. Create certainty in zoning and the land use process. (Community Goal)

VII.2.a Explore amendments to the noticing and vested rights requirements as necessary to implement the policy. (I – P, AO)

VII.2.b Explore amendments to the Land Use Code as necessary to implement the policy. (I – P)

VII.2.c Improve and codify a clear definition of what “conceptual” review and “final” review address. (I – P)

VII.3. Ensure that PUD and COWOP processes result in long-term community benefits and do not degrade the built environment through mass and scale that exceed land use code standards. (Community Goal, Proposed Code Amendment)

VII.3.a Amend COWOP section of City code to include full Planning & Zoning Commission review of projects as if the proposal were a Conceptual & Final PUD. (I – P)

VII.3.b Review City and County Planned Unit Development (PUD) and COWOP land use code provisions with the intention of strengthening language to require strong and demonstrable community benefits in perpetuity in exchange for any dimensional variance, and limit the capacity to exceed land use code standards. (I – P)

VII.3.c Conduct a comprehensive study of PUD and COWOP projects from the past 5 years comparing the code in place at the time and what was actually approved, e.g. dimensional standards, community benefits, etc. (I – P)

West of Castle Creek Corridor Policies and Action Items

I. LAND USE

I.1. Planning for the West of Castle Creek Corridor should support a well-defined and functional visual pattern for a series of distinctly different “nodes” of activity supporting limited uses that are physically separated by open space. (Community Goal)

I.1.a Create a comprehensive Land Use Master Plan and Future Land Use Map for the West of Castle Creek Corridor that ensures planning in the area is coordinated and recognizes the need for improved transportation services in the corridor before significant growth is allowed to occur in the area. The Master Plan should preserve and improve existing uses to maintain their functionality, vitality, and longevity. (I – P)

I.1.b Amend City and County Land Use Codes to implement the findings of the Land Use Master Plan. (LT – P)

I.1.c Amend City and County zoning in the area to discourage additional development of new free-market single family and duplex homes in the Highway 82 Corridor. (I – P)

I.1.d Create and adopt joint City and County Design Standards for the area that reflect the diversity of uses within the nodes in the corridor. (LT – P)

I.1.e Ensure zoning reflects and will maintain the existing use mix and balance at the Airport Business Center. (I – P)

I.1.f Maintain the Buttermilk/Inn at Aspen area as a lodge/ski/recreation area. (I – P)

I.1.g Ensure any redevelopment of the Inn at Aspen and the Base of Buttermilk is coordinated in terms of pedestrian & vehicular connectivity, mass transit, utilities, etc. (LT – P)

I.1.h Ensure that the Airport Master Plan limits uses at the Airport site to transportation and supporting uses rather than expanding into lodging and other non-airport or supporting uses. (I – P)

I.1.i Identify “pockets” of land or parcels within the West of Castle Creek area that should remain as open space buffers between activity nodes, and zone as appropriate. (I – P)

I.1.j Create a master sign plan for pedestrian and vehicle traffic for the West of Castle Creek Area to facilitate user friendly access and circulation for residents and guests. (I – P)

II. SCENIC

II.1. The density, size and scale of new all development and redevelopment in the West of Castle Creek Corridor should maintain, and if possible enhance, the views of the natural environment seen as one travels through this portion of the Highway 82 corridor. (Community Goal)

II.1.a Visual modeling should be undertaken for the West of Castle Creek Corridor to provide a baseline for the existing visual aspects of bulk, height, density, setbacks, land use patterns, and scenic view-corridors worthy of protection. This should provide a basis for amending the City and County Land Use Codes, as necessary to guide and/or regulate the visual aspects of future development and redevelopment in the area. (I – P)

II.1.b Amend the City and County Land Use Code as necessary to require development and redevelopment to utilize existing topography such as dry ridges and hills to screen development. Large landforms, earthmoving, and landscaping to create continuous man-made visual barriers to screen developments should not be relied upon to allow development in visually prominent areas. (LT - P)

II.1.c Update Pitkin County lighting regulations to specifically address a limitation on glare from exterior and interior lighting associated with new development viewed from the Highway 82 corridor. (LT - P)

II.1.d Maintain the 200 foot setback from Highway 82 at the Airport Business Center and the 100 foot setback in the rest of the corridor. (LT - P)

II.1.e Update the City's Annexation Plan and Land Use Code, as necessary, to ensure annexation agreements maintain the setbacks along the corridor. (LT - P)

II.1.f Evaluate and update the City and County Land Use Codes as needed to maintain scenic view corridors from Highway 82. Explore creation of new scenic viewplanes along Highway 82. (LT - P)

III. TRANSPORTATION

III.1. Improve the convenience, reliability, comfort, affordability, safety, capacity, and quality of experience of transit services and improve efficiency and coordination between all related aspects of transportation in the West of Castle Creek Corridor. (Community Goal, Collaborative Initiative)

III.1.a Create a comprehensive transportation master plan for the West of Castle Creek Corridor based on, but not limited to existing planning efforts, including the Entrance to Aspen Record of Decision, the Highway 82 Access Control Plan, and RFTA's Bus Rapid Transit (BRT) program. The purpose of such a plan is to coordinate and improve all aspects of auto, air, transit, parking and trail function in the context of planned development or redevelopment of activity nodes in the corridor. (I - T, RFTA, PW, A)

III.1.b Obtain updated data regarding daily traffic levels, including volume and time of day, between the edge of the Urban Growth Boundary (Airport area) and the City of Aspen. (I - T, PW)

III.1.c Complete and implement the Highway 82 Access Control Plan to ensure that design and location of intersections, access and signalization facilitate, rather than impede the highway's status and function as the main, year-round access to and from Aspen. As a part of that Plan, improve the safety of the signalized intersection at the entrance to the Business Center and ensure that the location of signalized intersections support effective mode transfers from transit to Park N' Ride facilities. (I - PW, CDOT)

III.1.d Determine the parking need in the ABC, with an emphasis on encouraging transit and trails as preferred modes of transportation where possible. Develop and implement a plan to accommodate needed parking on individual parcels and on streets within the ABC. (I - PW)

III.1.e Explore the creation of a transportation district in the West of Castle Creek Area to ensure that development pays its proportional share of transportation improvements in the corridor. (LT - T, PW)

III.1.f Create a transit shuttle in the West of Castle Creek corridor, connecting the City of Aspen to Burlingame, Truscott, BMC, the Airport Business Center and North 40. (I - RFTA, T, PW)

III.1.g Coordinate the location of RFTA Bus Rapid Transit (BRT) stations at Buttermilk and at the Pitkin County Airport with safe pedestrian access across Highway 82. (I - RFTA, PW)

III.1.h Explore options for enhancing the transition between transportation modes at Park 'n Ride locations that would improve the quality of the transit experience. (I - RFTA)

Transportation Policies and Action Items

Primary Transportation Policies:

1. Use Transportation Demand Management tools to accommodate additional person trips in the Aspen Area. (Community Goal, Collaborative Initiative)

2. Continue to limit Average Annual Daily Trips (AADT) to 1993 levels at the Castle Creek Bridge, and strive to reduce peak-hour vehicle-trips to below 1993 levels. (Community Goal, Collaborative Initiative)

I. PUBLIC TRANSIT

I.1. Improve the convenience, reliability, efficiency, comfort, accessibility, affordability, safety, capacity, and quality of the regional transit service experience, while ensuring physical improvements are consistent with community character. (Community Goal, Collaborative Initiative)

I.1.a The City, County, Snowmass Village, EOTC, SkiCo, the Airport, CDOT and RFTA must be active and working partners to help implement Bus Rapid Transit (BRT). (I – T, County Manager, City Manager, Town of Snowmass Village, RFTA, SkiCo, PW, Airport)

I.1.b Maintain free bus service from Aspen to Snowmass (LT – T, RFTA)

I.1.c Maintain existing free bus service in the Urban Growth Boundary and explore additional routes. (LT – T, RFTA)

I.1.d Make using, accessing, and getting information about public transit more intuitive. (LT – City, RFTA, A)

I.1.e Utilize technology to provide real-time information on transit services and road conditions. (I – RFTA)

I.1.f Review RFTA's fare system to achieve greater simplicity and clarity and to ensure affordability. (LT - RFTA)

I.1.g Create bus stop shelters that incorporate safe, comfortable waiting areas, storage of bicycles, real-time information on transit schedules and road conditions. (I – RFTA)

I.1.h Increase the ability of buses to carry bicycles. (LT - RFTA)

I.1.i Incorporate public art at BRT stations. (I – RFTA, T, PW, City Manager, County Manager)

I.1.j Identify the location and amount of space required for bus parking, maintenance, staging areas for RFTA. (I – RFTA, T)

I.1.k Remodel Rubey Park to improve bus staging areas. (LT – T, RFTA, City Manager)

I.2. Plan for the location and development of Park and Ride areas considering ease of intermodal transition, quality of experience, effectiveness and cost. (Collaborative Initiative)

I.2.a Conduct a study on demand patterns of commuters to help determine optimal locations of Park and Ride areas. (I – RFTA, T, PW, Snowmass Village, SkiCo)

I.2.b Employ Best Practices for using technology to encourage use of Park and Ride areas, such as cell phones, bus information displays, electronic highway signs. (I – RFTA, T, PW)

I.2.c Develop cost comparisons for different Park and Ride locations. (I – RFTA, T, PW)

I.2.d Explore options for enhancing the transition between modes at Park and Ride locations to improve the quality of the experience. (I – RFTA)

I.2.e Plan for bicycle storage/lockers at Park and Ride areas. (I – RFTA, T, PW)

I.3. Actively promote public awareness of transit alternatives for visitors and second homeowners, including bus routes and the pedestrian/bicycle trail system. (Collaborative Initiative, Incentive Program, Work Program for Transportation)

I.3.a Collaborate with ACRA, SkiCo, lodges, and property management companies to increase the quality and availability of information provided to visitors on summer and winter travel options, such as transit schedules, lodging shuttles, walking, bicycling etc. (I – RFTA, T, ACRA, SkiCo, Stay Aspen Snowmass etc)

I.3.b Provide information on travel options in multiple languages and using international symbols. (I – RFTA, T, A)

I.4. Maintain the reliability and improve the convenience of City of Aspen transit services. (Work Program for Transportation)

I.4.a Improve bus stop shelters and passenger amenities. (I – T)

I.4.b Replace transit vehicles that have met or exceeded their service life, and add vehicles to meet demand. New vehicles should be environmentally clean and quiet. (LT – T)

I.4.c Support consistent operating hours for transit routes. (I – T)

I.4.d Ensure bus services remain free for users. (I – T)

I.4.e Utilize technology to provide real-time information on transit services and road conditions. (I – T)

I.4.f Explore the demand and funding available for extending transit services to the ABC. (I – T, PW)

I.4.g Explore increasing the frequency of certain transit routes, while minimizing impacts on neighborhoods. (LT – T)

II. BIKE AND PEDESTRIAN

II.1. Extend and/or improve commuter pedestrian/bike trails with the greatest potential for integration with the public transit system. (Collaborative Initiative, Work Program for Parks & Open Space and Transportation)

II.1.a Identify bike and pedestrian trail extensions and improvements with the greatest potential for integrating with public transit. Prioritize these improvements to assist in annual budgeting decisions. (I – T, OS/P, RFTA, PW)

II.1.b Identify bike and pedestrian trail links and improvements with the greatest potential for extending commuter trails. Prioritize these improvements to assist in annual budgeting decisions. (I – T, OS/P, RFTA, PW)

II.2. Expand and improve bicycle parking/storage. (Collaborative Initiative, Work Program for Transportation)

II.2.a Require all publicly-funded development to provide space for bicycle parking/storage in prominent locations. (I – P, P/OS, T)

II.3. Improve the convenience, safety, and quality of experience for bicyclists and pedestrians on streets and trails. (Collaborative Initiative, Incentive Program, Work Program for Transportation)

II.3.a Develop a comprehensive plan for convenient bicycle parking/ storage in downtown. Explore replacing some vehicle parking with bike parking. (LT – T, E, P/OS)

II.3.b Explore adding bike lanes to existing rights-of-way. (LT – T, Streets, P, E, City Manager)

II.3.c Use cash-in-lieu funds (for parking or pedestrian amenities) to implement the Downtown Enhancement and Pedestrian Plan (DEPP). (I – P)

II.3.d Improve the safety and quality of experience of crossing Main Street in the downtown area, and Highway 82 at various locations between Castle Creek and the ABC. (I – PW, T, P/OS, P, A)

II.3.e Explore establishing a system of free bicycles for community users throughout the UGB. (I – T)

III. USER GROUPS AND TRANSPORTATION DEMAND MANAGEMENT

III.1. Reduce vehicular trips that are generated by employment, special events, construction activity, schools, recreation, the service industry, local residents and other activities. (Community Goal, Collaborative Initiative)

III.1.a Expand membership and participation in the City's Transportation Options Program (TOP) through outreach and incentives, with a specific emphasis on large employers and school-related impacts. (I – T)

III.1.b Ensure all businesses in the Aspen Area receive information about the City's Transportation Options Program by adding the Transportation Department as a required referral and contact before annual business licenses are issued. (I – T, Finance Department)

III.1.c Educate homeowners who employ a large number of service workers regarding the benefits of TOP programs. (I – T, Finance Department)

III.1.d Establish a City-County agreement for funding of City-provided TOP services implemented in the County portion of the Aspen Area. (I – County Manager, PW, T)

III.1.e Establish a menu of TDM requirements for special events to be implemented by the Special Events Committee. (I – T, Special Events Committee)

III.1.f Implement new TDM measures, including real-time on-line carpool matching, public and/or private vanpooling, dynamic carpooling and other measures. (I – T)

III.1.g Ensure adequate funding and staff resources exist in the City Transportation Department for the development and implementation of TDM and outreach programs. (I - City Manager, County Manager)

III.1.h Update the City and County's Construction Management Plans and related codes to address construction-related trips and impacts using principles of TDM. (I – T, E, PW, P)

III.1.i Ensure adequate funding and staff resources exist for enforcement of Construction Management Plans. (I - City Manager, County Manager)

III.1.j Expand coordination and communication between the schools and City/County/RFTA regarding regular school hours and special events to reduce transportation impacts. (I – T)

III.1.k Incentivize school membership and participation in TOP. (I – T)

III.1.l Gather relevant data needed to define the impacts of resident vehicle travel. (I –T)

III.1.m Identify and implement TDM strategies to reduce resident vehicle travel. (I – T)

III.2. Minimize the adverse impacts of development on the valley-wide transportation system that occur during economic booms and periods of intense construction activity. (Collaborative Initiative, Proposed Code Amendment)

III.2.a Explore amend City and County codes to adopt similar systems that pace the level of transportation and impacts of construction activity on an annual basis. (I – P)

III.2.b Implement TDM measures to reduce adverse impacts of traffic and parking generated by development and associated new employment. (LT – T, P)

III.3. Require development to mitigate for its transportation impacts. (Proposed Code Amendment)

III.3.a Amend codes to require that all new major development identify and mitigate its transportation impacts. (I – P, T)

III.3.b Adopt a Transportation Demand Management (TDM) policy, using an Aspen-based trip generation model, that can be implemented by development to mitigate its transportation impacts. (I – P, T)

III.3.c Update existing transportation mitigation fees to include all costs, including physical and long-term operational costs. (I – P, T)

III.3.d Amend City and County codes to ensure development upholds its transportation mitigation commitments as approved. (LT – P, T)

IV. ENTRANCE TO ASPEN

IV.1. We are committed first to reducing traffic by implementing Transportation Demand Management (TDM) solutions. (Community Goal, Collaborative Initiative)

IV.1.a Maximize all TDM solutions to the Entrance to Aspen before considering a built solution. (I – City Manager, County Manager, T, EOTC)

IV.2. At the same time, the City of Aspen should develop a list of Community Objectives to evaluate options for physical improvements to the Entrance to Aspen, such as:

- **Retain small town character;**
- **Avoid a net loss of open space;**
- **Preserve historical resources;**
- **Maintain vehicle trips across Castle Creek at or below 1993 levels;**
- **Maintain Highway 82 as a two-lane facility for general purpose traffic with extra capacity reserved for mass transit use only;**
- **Increase the reliability and convenience of our public transit system and our pedestrian and bicycling system;**
- **Include reliable cost estimates regarding both capital built-out costs and long-term operational costs;**
- **Include a carbon-footprint analysis of the construction phase as well as annual operations; and**
- **Use visual simulations to illustrate how improvements would impact the flow of vehicular traffic and the user experience.**

(Community Goal, Collaborative Initiative)

IV.2.a Community objectives should be used to evaluate any proposal for physical improvements to the Entrance to Aspen, such as those listed in the policy. (LT – City Manager, County Manager, T, EOTC)

V. PARKING

V.1. Manage the supply of parking to reduce the adverse impacts of the automobile. (Collaborative Initiative, Work Program for Parking and Transportation)

V.1.a City Council should define a threshold for vehicle trips over the Castle Creek Bridge, at which time paid parking fees automatically increase. (I – T, City Manager)

V.1.b Expand designated paid parking areas in town. (I - T)

V.1.c Decrease maximum paid parking periods. (I - T)

V.1.d Explore the benefits of separating on-site parking spaces from their respective residential and commercial units in appropriate areas; such that parking spaces could be rented or purchased separately. (I – P, T)

V.1.e Amend the City code to establish a cap on the number of parking spaces associated with development to discourage automobile use. (I – P)

V.1.f Phase out preferential parking for hybrid and electric vehicles to reduce the number of vehicle trips. (I – T)

V.1.g Explore converting on-street vehicle parking spaces for other transit options, such as bike lanes, bike parking. (I – T)

V.1.h Explore expanding the pedestrian malls. (LT – T, P)

VI. EDUCATION AND PUBLIC OUTREACH

VI.1. Ensure that public outreach includes the latest technologies for the purpose of well-informed decision-making, regarding transportation issues. Collaborative Initiative)

VI.1.a Identify and collect data necessary to build an animated traffic simulation model of the transportation system to illustrate vehicle trip levels, traffic flow, public transit elements and bike/pedestrian trail integration from downtown to the Brush Creek Road intersection. (I – T, City Manager)

VI.1.b Explore establishing an Ambassador Program to promote the commuter and employer transit incentive programs. (I – T)

VI.2. Build awareness regarding government subsidies for transportation, including the fact that subsidies not only support public transit but also provide major subsidies to sustain roads and highways. (Collaborative Initiative)

VI.2.a Develop a campaign to inform the public of government subsidies for transit as well as for repair and maintenance of roads, highways and parking. (I – City Manager)

VI.3. Promote the use of Bus Rapid Transit as a valley-wide transportation system. (Collaborative Initiative)

VI.3.a Develop a campaign to provide the public with tools to compare vehicle use versus BRT, in terms of cost (gas, parking, repair and maintenance), environmental impacts, reliability and efficiency. (I – City Manager)

VII. AIRPORT

VIII.1. Strengthen the Airport's role in the valley-wide regional transportation system. (Collaborative Initiative)

VII.1.a Explore opportunities to use the airport as a multi-modal transportation hub for a variety of users. (LT – A, CDOT, RFTA, ABC Group, City Manager, County Manager, SkiCo)

VII.1.b Determine how the Airport can best integrate with the implementation of the BRT project and other future mass transit options. (LT – A, RFTA)

VII.1.c Reserve room on the Airport property for future commuter parking needs to support the mass transit system. (LT - A)

VII.1.d Preserve dedicated transit rights-of-way and easements to accommodate a future dedicated mass transit system. (LT - A)

VII.2. Increase the quality and availability of information on travel options. (Collaborative Initiative)

VII.2.a Collaborate with ACRA, SkiCo, lodges, taxi/shuttle companies, and property management companies to increase the quality and availability of information on travel options, such as transit, lodging shuttles, walking, bicycling, etc. provided to visitors and residents during inclement weather . (LT – A, ACRA, SkiCo)

VII.3. Improve the efficiency and reliability of airport services while reducing environmental impacts. (Work Program for Airport)

VII.3.a Conduct an analysis of the overall efficiency of airport operations. (I – A)

VII.3.b. Work with users and airport tenants, such as commercial airlines, general aviation, food concessions, rental car companies etc) to implement new technologies that reduce emissions and increase fuel economy. (I – A)

VII.4. Improve the overall quality of the airport experience in a manner that is consistent with our community character. (Work Program for Airport)

VII.4.a Explore improvements to enhance the current terminal's functionality, convenience and appearance of the airport, such as information kiosks, public art, landscaping, and food availability. (I – A)

VII.4.b Ensure modifications to the terminal are consistent with community character. (I – A, P)

VII.4.c Explore the feasibility of establishing a final destination bag delivery for airport arrivals. (I – A)

VII.5. Reduce the negative impacts of Airport operations on the surrounding area. (Work Program for Airport)

VII.5.a Continue to work with the airlines on the Fly Green/Fly Clean Program to encourage pilots to operate their aircraft as quietly as possible through voluntary compliance with noise abatement measures. (I – A)

VII.5.b Continue to work with private aircraft owners and operators to utilize the quietest aircraft possible when operating at the Airport. (I – A)

VII.5.c Continue to reduce Airport impacts on the surrounding area by soliciting feedback from area residents. (I – A)

VII.5.d Study all options for reducing ground noise from aircraft power up and other ways to best mitigate this noise on surrounding residential areas. (I – A)

VII.5.e Continue efforts to refine and implement the Airport's Greenhouse Gas and Climate Action Plan. (I – A)

VII.6. Improve the convenience, efficiency and environmental impacts of ground transportation options available at the Airport. (Work Program for Airport)

VII.6.a Work with rental car companies on ways to tailor the rental car inventory to take advantage of new technologies that reduce emissions and increase fuel economy. (I – A)

VII.6.b Work with lodges and hotels in the Aspen/Snowmass Area on measures to improve shuttle service to reduce reliance on rental cars. (I – A)

VII.6.c Provide a grade-separated, safe pedestrian crossing between the Airport and the ABC. (I – A, CDOT, RFTA, ABC Group, City Manager, County Manager)

VII.6.d Improve signage and information to direct users from terminal to public transit services. (I – A, RFTA)

VIII. FUNDING

VIII.1. Increase funding for public transit so that service is consistent and reliable with a preference for stable and sustainable revenue sources. (Collaborative Initiative)

VIII.1.a Evaluate the sustainability of existing and prospective transportation revenue streams to determine if they are sufficient to accommodate demand. (I – City Manager, County Manager, RFTA, Transportation)

VIII.1.b The County should strongly consider seeking voter approval to increase Construction Materials Use Tax to make the rate consistent with the City. (I – County Manager)

VIII.1.c Apply for federal grants available for pedestrian and bike access to public transit. (I – P/OS, Trails)

VIII.1.d Set a parking revenue goal that requires excess funding go to public transit operations. (I – T, Parking)

VIII.1.e Budgeting for transit operations should consider fluctuating revenue sources. (LT - City, County, RFTA)

VIII.1.f Explore and implement funding options for a grade-separated crossing at the airport. (LT – A, CDOT, RFTA, ABC Group, City Manager, County Manager)

VIII.1.g In addition to the TDM/Air Quality impact fee, explore implementing a fee that can be used for operational costs. (I – T)

IX. DATA GATHERING

IX.1. Ensure that enough clear and understandable data is gathered and compiled for the purpose of well-informed public decision-making. (Data Needs)

X.1.a Establish an accurate baseline of traffic data between Brush Creek and Aspen on Highway 82, including all relevant feeders. (I – T, PW)

IX.1.b Use reliable data to build traffic simulation model from Brush Creek to Aspen, including relevant feeder streets and roads, which can be used to demonstrate potential impacts of TDM measures and potential impacts of various physical solutions to the Entrance to Aspen. (I – T, PW)

IX.2. Quantify user groups on the transportation network to better customize TDM strategies. (Data Needs)

IX.2.a Conduct a traffic study to gather information on traffic counts and vehicle occupancy information. (I – T, PW)

IX.2.b Survey the origin and destination of transportation system users. (I – T, PW)

IX.2.c Conduct follow-up surveys to determine the effectiveness of TDM measures, including those required by development approvals and employer-initiated programs. (LT – T)

Housing Policies and Action Items

I. SUSTAINABILITY AND MAINTENANCE

I.1. Community Workforce Housing (CWH) should have adequate capital reserves for maintenance and significant capital projects. (Collaborative Initiative)

I.1.a Require new CWH to complete a Capital Reserve Study and regular updates. (I – APCHA)

I.1.b Ensure CWH assess adequately for maintenance and reserves based on the study. (I – APCHA)

I.1.c Conduct Capital Reserve Studies of publicly-owned rental inventory and set priorities for maintenance of existing housing stock. (I – APCHA, City Manager, County Manager)

I.1.d Create a requirement for existing HOAs to prepare Capital Reserve Studies. (I – APCHA)

I.2. All deed-restricted housing units should be utilized to the maximum degree possible. (Collaborative Initiative, Work Program for APCHA)

I.2.a Update and standardize deed restrictions as practically possible upon new sales. (I – APCHA)

I.2.b Review seasonal and rental usage of CWH to ensure the policy is being implemented. (I – APCHA)

I.3. All deed-restricted housing units should be used and maintained for as long as possible, while considering functionality and obsolescence. (Collaborative Initiative, Work Program for APCHA)

I.3.a Conduct a cost/benefit study of housing inventory to determine whether it is more cost effective to maintain existing housing stock or to rebuild it. (I – APCHA)

I.4. Provide educational opportunities to potential and current homeowners regarding the rights, obligations, and responsibilities of homeownership. (Collaborative Initiative)

I.4.a Create and implement an education program for buyers and existing owners of CWH that addresses the issues of funding, buyer's rights and obligations, and homeowner's responsibility to maintain units for future generations. (LT – APCHA)

I.4.b Create and implement an education program that outlines the purpose of the CWH program and the trade-offs made by the community to build CWH. (LT – APCHA)

I.4.c Educate applicants regarding all costs and ongoing expenses related to living in CWH, including taxes, heating and water rates, snow removal, special assessments, etc. (LT – APCHA)

I.4.d Revise APCHA guidelines to ensure applicants can only purchase the category that is within their financial means. (I – APCHA)

I.4.e Require professional home inspections by CWH home buyers when housing units are purchased. (I – APCHA)

I.5. Emphasize the use of durable and environmentally responsible materials, while recognizing the realistic lifecycle of the buildings. (Incentive Program, Proposed Code Amendment)

I.5.a Create incentives for CWH residents to improve the energy efficiency and safety of their units. (I – APCHA, EH, CI, B)

I.5.b Amend the Housing Guidelines to establish standards for materials, equipment and utility systems that emphasize durability, environmental stewardship, and safety. Allow for amendments to keep pace with technological improvements. (I – APCHA, P, B, EH)

II. PROGRAM IMPROVEMENTS

II.1. The housing inventory should bolster our socioeconomic diversity. (Community Goal)

II.1.a Explore the value of creating a new housing unit goal, similar to goal included in the 2000 AACP. (I – APCHA, City, County)

II.1.b Review and revise APCHA Guidelines to reflect current and future category demand using 3-5 year projections. (I – APCHA)

II.1.c Create options to provide greater flexibility for movement of existing residents within APCHA inventory to accommodate shifts in housing needs. (I – APCHA)

II.1.d Review current mix, categories, and incentives to ensure opportunities for a broad spectrum of workers. (I – APCHA)

II.1.e Study the model used by Aspen Volunteer Fire Department for possible implementation. (I – APCHA)

II.2. Community Workforce Housing (CWH) should be prepared for the growing number of retiring Aspenites. (Community Goal, Work Program for APCHA)

II.2.a Gather data on the current and future trend of retiring Aspenites and analyze the potential impacts on CWH. Amend the Housing Guidelines to implement the findings. (LT – APCHA)

II.3. Employers should participate in the creation of seasonal rental housing. (Collaborative Initiative, Incentive Program)

II.3.a Create a working group of interested parties to explore the creation of new seasonal rental housing. (I – APCHA, Housing Frontiers, City Manager, County Managers, private sector)

II.4. Employers who provide housing for their workers through publicly-owned seasonal rental housing should assume proportionate responsibility for the maintenance and management of the facility. (Collaborative Initiative, Incentive Program)

II.4.a Explore methods to place proportionate responsibility on employers for the management and use of existing seasonal housing. (I – APCHA, City Manager, County Managers, private sector)

II.5. Redefine and improve our buy-down policy of re-using existing housing inventory. (Work Program for APCHA)

II.5.a Amend the City and County land use codes and Housing Guidelines to clarify the parameters of buying down a property to address issues such as requirements of condominium declarations, allocation of assessments, physical condition and long term maintenance. (I – P, APCHA)

II.5.b Explore amending the City and County land use codes to define the parameters of a “buydown” mitigation unit, in other words, whether buy-down applies solely to free market units, or can also occur within CWH categories. (I – P)

II.5.c Conduct a study to determine the financial feasibility of the public sector engaging in the buy-down of free-market units compared to constructing new community workforce housing units. (LT – P, APCHA)

II.5.d Explore the creation of a buy-out program. (I – APCHA)

II.5.e Require a Capital Reserve Study, plan and adequate assessments for maintenance and proportionately-funded reserves when a buy-down or buy-out is being considered. (I – APCHA)

II.6. Eliminate the Accessory Dwelling Unit (ADU) program, unless mandatory occupancy is required. (Proposed Code Amendments)

II.6.a Increase the rate of occupancy for existing Accessory Dwelling Units & Caretaker Dwelling Units. Explore incentives and penalties. (I – APCHA)

II.6.b Explore buy-out program for existing ADUs. (I – APCHA etc.)

III. FISCAL RESPONSIBILITY

III.1. Ensure fiscal responsibility regarding the development of publicly-funded housing. (Collaborative Initiative)

III.1.a Evaluate current funding sources for sustainability and develop a list of potential funding options. (I – APCHA, City Manager, County Manager)

III.1.b Explore APCHA's taxing authority as an option to fund CWH. (I – APCHA)

III.1.c Explore the potential to obtain grants from FHA and other entities. (I – APCHA)

III.1.d Update housing cash-in-lieu fees to reflect the total cost of development. (I – APCHA)

III.1.e Establish criteria or attributes that help identify and rank desirable housing locations. (I – APCHA, City Manager, County Manager)

III.1.f Conduct a cost/benefit analysis in order to prioritize existing publicly-owned property to be developed for CWH within the UGB. (I – APCHA, City Manager, County Manager)

III.1.g Identify all housing that carries expiration on its deed-restrictions, such as Centennial, Castle Ridge, and evaluate the feasibility of keeping them in the inventory. (I – APCHA, City Manager, County Manager)

III.1.h Require the City and County engage a local real estate broker, appraiser, and inspector as buyer's agents before the purchase of any real estate. (I – City Manager, County Manager)

III.2 Promote broader support and involvement in the creation of non-mitigation Community Workforce Housing, including public-private partnerships. (Collaborative Initiative, Incentive Program)

III.2.a Establish a working group of people who represent the City, County, public agencies, and the private sector in the development of CWH to implement the policy. Explore models of producing community workforce housing units, including quasi-public housing development corporations. (I – APCHA, Housing Frontiers, City and County Managers, private sector, taxing districts)

III.2.b Explore the creation of a program where the City or County would provide a tax benefit, payment or life estate planning or other financial incentive to a free-market homeowner to include their property in the City/County's land banking of future CWH. (I – City Manager, County Manager)

III.2.c Explore creating a program for short-term deed restrictions. (I – APCHA)

III.2.d Explore the benefits of expediting specific CWH projects through the development and construction phase. (I – P, B, APCHA)

IV. LAND USE & ZONING

IV.1. CWH should be designed for the highest practical energy efficiency and livability. (Incentive Program, Proposed Code Amendment)

IV.1.a Amend the Housing Guidelines to establish standards for materials, equipment and utility systems that emphasize durability, environmental stewardship, while keeping pace with technological improvements. (I – APCHA)

IV.1.b Amend the Housing Guidelines to establish livability standards that promote pride of living in CWH. These could include soundproofing, and storage that meets the needs of a community that enjoys an active, outdoor lifestyle. (I – APCHA)

IV.2. All CWH must be located within the Urban Growth Boundary. (Proposed Code Amendment)

IV.2.a Explore any code amendments required to implement this policy. (I – P)

IV.3. On-site housing mitigation is preferred. (Work Program for Planning & APCHA, Proposed Amendment)

IV.3.a Amend the city and county codes to include the following prioritization for housing mitigation for all types of development:

- i - on-site
- ii - off-site (buy-down, buy-out, and Housing Credits)
- iii - cash-in-lieu (I – P)

IV.3.b Amend the city and county codes to prohibit the conversion of existing lodge units to affordable housing. (I – P)

IV.3.c Update the Housing Guidelines to provide a mechanism to reject mitigation offered by developers when it does not meet APCHA guidelines/policies. (I – APCHA)

IV.3.d Amend the City and County codes to allow off-site housing only through a special review process. (I – P)

IV.3.e Amend the City and County codes to require all development that generates jobs within the Aspen UGB to provide mitigation within the UGB. (I – P)

IV.4. Track trends in housing inventory and job generation to better inform public policy discussions. (Data Needs)

IV.4.a Develop and implement a system to reliably track the gain and loss in free-market housing traditionally used by local workers. (I – P, City Manager, County Manager, APCHA)

IV.5. The design of new Community Workforce Housing (CWH) should optimize density while demonstrating compatibility with the massing, scale and character of the neighborhood. (Proposed Code Amendment)

IV.5.a Examine the City and County codes to ensure they support the policy. (I – P)

IV.5.b Amend the code to define “neighborhood.” (I – P)

IV.6. Residents of Community Workforce Housing (CWH) and free-market housing in the same neighborhood are treated fairly, equally, and consistently, with regard to any restrictions or conditions on development such as parking, pet ownership etc.. (Proposed Code Amendment)

IV.6.a. During the review of any new CWH development, the prohibitions, constraints, and permissions generally found in the neighborhood, such as those regarding parking and pets, should be consistently applied to the proposal. New CWH development must not be the subject of discrimination. (I – P)

V. HOUSING RULES AND REGULATIONS

V.1. The rules, regulations and penalties of Community Workforce Housing (CWH) should be clear, understandable and enforceable. (Work Program for APCHA)

V.1.a Rewrite the Housing Guidelines (APCHA rules, regulations, and penalties) in a clear and concise format. (LT – APCHA)

V.1.b Review and revise enforcement methods with specific placement of authority, recognizing monetary resources needed to implement. (I – APCHA)

V.1.c Clarify the roles and authority of APCHA in the City-County Inter-Governmental Agreement (IGA), and revise as necessary. Review the objectives of the IGA and determine how the IGA should operate. This should be a meeting that is facilitated by an independent party. (LT – APCHA, City Manager, County Manager)

V.1.d Amend the Housing Guidelines to require people to sell their free-market home before they are able to move into CWH. (I – APCHA)

V.2. Ensure effective management of CWH assets. (Work Program for APCHA)

V.2.a Create a formal governance/management agreement between APCHA and individual homeowners associations. (I – APCHA)

V.2.b Review local, state, and federal guidelines and laws related to homeowners associations to ensure compliance. (I – APCHA)

V.2.c APCHA should vigorously pursue requiring all associations to adopt the Colorado Common Interest Ownership Act (CCIOA). (I – APCHA)

V.2.d Actively review state law, and lobby when appropriate regarding the development and funding of CWH. (LT – APCHA, City Manager, County Manager)

Parks, Recreation, Open Space & Trails Policies and Action Items

I. PARKS

I.1. Acquire land for active and passive parks whenever possible. (Community Goal, Collaborative Initiative, Work Program for Parks/Open Space)

I.1.a Use development review processes whenever possible for the acquisition and development of parks. (I – P, P/OS)

I.2. Maintain a balance between active recreational parks and passive parks. (Work Program for Parks/Open Space)

I.2.a Continue to develop future park space as active or passive by assessing the park system's inventory, conducting needs assessments and inviting public feedback. (LT – P/OS)

I.2.b Amend the code to establish a preference for on-site public parks as part of larger new development, where appropriate. (LT – P/OS, P)

II. RECREATION

II.1 Provide affordable recreational opportunities for all ages and abilities. (Community Goal, Collaborative Initiative)

II.1.a Update the 2005 Aspen Recreation Department Strategic Plan, ensuring that it complies with the policy. (I – ARD)

II.1.b Enhance current programs and create additional recreational programs with a primary focus on utilizing existing facilities. (LT – ARD)

II.2 The Aspen Recreation Department should strive to be financially self-sustaining while still providing affordable, accessible, quality recreational opportunities. (Collaborative Initiative, Work Program for Recreation)

II.2.a Explore special events programming that optimizes the use of existing recreational facilities, while generating revenue. (LT – SE, ARD)

II.2.b Seek partnerships with outside entities to reduce overall subsidies and to help promote Aspen's recreational facilities. (LT – ARD)

II.2.c Implement energy-efficiency measures and use sustainable energy resources to help reduce energy costs for recreational facilities. (I – ARD)

II.2.d Promote the Aspen Area as a high-altitude training venue. (I – ARD)

II.3. Strive to integrate physical rehabilitation and adaptive recreation into Aspen Recreation Department facilities and programs. (Work Program for Recreation)

II.3.a Identify and invite potential partners to update the Recreation Business Plan to identify staffing and facilities necessary to accommodate physical rehabilitation and adaptive recreation programs. (LT – ARD)

II.4. New recreational facilities should offset impacts regarding traffic and job generation and maintain the contextual character of the built environment. (Proposed Code Amendment)

II.4.a Explore mitigation tools in order to offset impacts from new recreational facilities and programs regarding traffic and job generation. (LT – P, T)

III. OPEN SPACE

III.1. Maintain and protect existing open space parcels. (Community Goal, Collaborative Initiative)

III.1.a Develop management plans for all open space parcels according to the terms of acquisition as a means to balance open space values with appropriate recreational opportunities. (LT – P/OS)

III.2. Acquire open space to preserve biodiversity, wildlife habitat, scenic value and to support trail connectivity and recreational activities. (Community Goal, Collaborative Initiative, Work Program for Parks/Open Space)

III.2.a Continue to evaluate opportunities for the purchase of open space. (LT – OS)

III.2.b Re-authorize the city's open space sales tax before it sunsets in 2025. (LT- P/OS)

III.2.c Use development review processes whenever possible to secure scenic, recreational or agricultural easements. (I – P/OS, P)

III.2.d Explore a consistent method for assessing value of open space. (I – P/OS)

III.3 Continue to promote multi-jurisdictional collaboration for open space acquisition, acknowledging that open space and trail systems are regional assets that improve the region's quality of life. (Community Goal, Collaborative Initiative, Work Program for Parks/Open Space)

III.3.a Pursue public-private partnerships as an important tool for completing future projects.

III.3.b Ensure the new Top of the Rockies National Scenic and Historic Byway is enhanced and preserved through cooperative partnerships. (LT – Top of the Rockies National Scenic and Historic Byway Board of Directors, Non-Profits, P/OS)

IV. TRAILS

IV.1. Acquire, improve and develop trail connections throughout the Aspen Area. (Community Goal, Collaborative Initiative, Work Program for Parks/Open Space)

IV.1.a Focus on developing safe and effective trail connections, separated from vehicular traffic, for both commuter and recreational use in the Castle Creek, Maroon Creek, East/West Highway 82, and Hunter Creek valleys. (LT – P/OS)

IV.1.b Implement marked bike lanes on roads where appropriate. (LT – P, T)

IV.1.c Implement the Pitkin County Nordic Trails Master Plan. (LT – P/OS, Nordic Council)

IV.1.d Continue to acquire trail easements through methods such as, private landowner donations, land use actions or acquisition. (LT – P/OS, Nordic Council)

IV.1.e Implement the City's Pedestrian Walkway and Bikeway Plan through phased capital improvements. (LT – P/OS)

IV.1.f Create buffer areas alongside trails to maintain separation between trails and development to preserve the integrity of the trails experience. Explore new land use tools or potential property acquisitions to implement this action item. (LT – P/OS, P)

IV.2. Encourage regional trail planning and multi-jurisdictional collaboration. (Community Goal, Collaborative Initiative)

IV.2.a Continue ongoing efforts to improve trail connectivity to outlying communities and public lands. (LT – P/OS)

IV.3. Increase opportunities for summer and winter trail commuting. (Collaborative Initiative, Work Program for Parks/Open Space)

IV.3.a Identify trails intended to move large numbers of people to and from recreational, cultural, commercial and educational centers and develop them so they are an attractive alternative to the automobile. Seek to integrate these trails with the public transit system. (See Transportation Chapter: II Bike and Pedestrian policy.) (LT – P/OS, Nordic Council)

V. PUBLIC OUTREACH

V.1. Educate the public regarding our parks, open space, trails and recreational opportunities through maps, brochures, and on-line services. (Collaborative Initiative, Work Program for Parks/Open Space and Recreation)

V.1.a Update and adopt the biodiversity and wildlife map that is in the 2000 AACP to ensure our wildlife resources are identified and protected. (I – P/OS, P)

V.1.b Create a Comprehensive Map and Inventory of all parks, trails, open space properties, land trust properties, conservation easements and fishing easements within the Urban Growth Boundary. (LT – P/OS)

V.1.c Create a comprehensive and publicly accessible database that outlines management plans and other relevant information for parks, open space, trails and recreational facilities. (LT – P/OS)

V.1.d Improve public access to and information about parks, recreation, open space, and trail facilities through brochures and signage programs. (LT – P/OS, ARC)

V.1.e Support education and outreach efforts for the Top of the Rockies National Scenic and Historic Byway. (LT – Top of the Rockies National Scenic and Historic Byway Board of Directors, P/OS)

Environmental Stewardship Policies and Action Items

I. GREENHOUSE GASES

I.1. By 2020, reduce the carbon footprint of the Aspen Area from 2004 levels by 30% (to 588,612.5 tons CO₂-e). (Community Goal)

I.1.a Enhance existing and create new incentives for Aspen Area property owners to voluntarily track and reduce their personal carbon footprints. (I - CI)

I.1.b Continue the Canary Initiative and Community-wide Greenhouse Gas Emissions Inventory and establish interim reductions goals. (LT - CI)

I.1.c Encourage businesses to decrease their greenhouse gas emissions by utilizing best practices, and becoming ZGreen and TOP certified when they get a business license. (LT- CI, EH)

I.1.d Study and implement methods to further decrease greenhouse gas emissions, such as incentivizing users to conduct energy audits, switch to renewable energy, purchase energy efficient appliances, improve insulation, etc. (LT- CI)

I.2. All existing development and uses should minimize their greenhouse gas emissions. (Community Goal)

I.2.a Explore the creation of incentives for existing development to minimize their greenhouse gas emissions. (I - P, B, E/SW)

I.3. Incentivize alternative forms of transportation to reduce reliance on fossil-fuels. (Incentive Program)

I.3.a Implement purchasing policy for new City and County vehicles to include hybrid, electric, or alternative fuel vehicles whenever possible. All vehicles purchased should score at 8 or higher for both air pollution and greenhouse gas emissions as listed in the EPA's green vehicle guide. (I - EH, CI, Streets, Asset)

I.3.b Incentivize the use and purchase of hybrid and electric vehicles by the public, including rental car companies (LT - CI)

I.3.c Incentivize air travelers to voluntarily offset impacts from flights through the purchase of Canary Tags. (I - CI)

I.3.d Continue to work with FAA to further reduce the pollution impacts of the airport. (LT - CI)

I.3.e Explore the potential benefits of adding bike lanes to existing rights-of-way, including looking for opportunities to eliminate some onstreet parking and replacing it with bike lanes. (I - T, Streets, P, E, City Manager)

I.3.f Establish a community bike sharing program throughout the UGB. (I - T)

I.3.g Encourage and increase the use of carpooling and car-sharing in the Aspen Area, including educating the public on the options and availability. (I - T)

I.4. All new development and uses should minimize their greenhouse gas emissions. (Proposed Code Amendment)

I.4.a Review and update elements of the Building Code to minimize the use of unsustainable resources and those that have high levels of embodied energy. (I – CI, EH, B)

I.4.b Quantify, evaluate, and reduce construction emissions. (I – EH)

I.4.c Amend the City and County land use codes to require all development to go through an environmental review that ensures it will meet the established thresholds. (I - P, EH, CI, SW, B)

I.4.d Establish a sliding scale of environmental thresholds for development. (I – P, EH, CI, B)

II. AIR QUALITY

II.1. Improve air quality. (Community Goal, Collaborative Initiative, Environmental Health Work Program)

II.1.a Maintain a maximum PM-10 level of 50 or less with 98% of days with PM-10 levels below 35 (I – EH, T, Streets)

II.1.b Track the use of street sanding and cleaning in the winter and street cleaning in the summer and investigate ways to minimize impacts. (LT – EH, Streets)

II.1.c Continue to investigate alternatives for winter treatment of Highway-82. (LT – EH)

II.1.d Improve public education and awareness of toxic pollutants, such as pesticides and radon, and implement programs to decrease their use. (I - EH)

II.1.e When PM-10 levels are likely to be high, inform the public and implement programs to encourage bus and carpool use. (I – EH, T)

II.2. Achieve and maintain healthy ozone levels. (Community Goal, Collaborative Initiative, Environmental Health Work Program)

II.2.a Monitor and determine baseline ozone levels for the Aspen Area. (I - EH)

II.2.b Evaluate ozone monitoring data and develop a program to attain and maintain healthy ozone levels. (LT - EH)

II.3. All existing development and uses should minimize their air pollution emissions. (Community Goal)

II.3.a Explore the creation of incentives for existing development to minimize their air pollution emissions. (I - P, B, E/SW)

II.4. All new development and uses should minimize their air pollution emissions. (Proposed Code Amendment)

II.4.a Explore amending the land use codes to require all development to go through an environmental review that ensures it will meet established sliding scale thresholds for air pollution. (I – P, EH, CI)

III. WATER

III.1. Maintain minimum instream flows for the Roaring Fork River and its tributaries. (Community Goal, Work Program for Water Department)

III.1.a Pursue dedication of water rights to maintain minimum stream flows. (I - U)

III.1.b Develop a reliable methodology for dedication of water rights for in-stream flow purposes. (LT - U)

III.2. Reduce the detrimental effects of diversions from the Roaring Fork River and its tributaries. (Work Program for Water Department)

III.2.a Increase mitigation efforts targeted at lowering the detrimental effects of river diversions. (LT - U, E/SW)

III.2.b Modify existing water policies and regulations to incentivize hookups to municipal water supply or other water districts such as the Buttermilk Metro District . (I - U)

III.3. Maintain and preserve existing riparian habitat and wetlands. (Work Program for Planning Department, Proposed Code Amendment)

III.3.a Examine existing land use policies to ensure they protect the riparian habitats. (I - P, P/OS)

III.4. Reduce the quantity of urban pollutants in stormwater runoff that discharges into the Roaring Fork River and its tributaries. (Work Program for Engineering, Proposed Code Amendment)

III.4.a Conduct master planning of the Aspen Area's sub-watersheds and install regional stormwater treatment facilities to capture and treat runoff, beginning with the most heavily developed areas. (I - E/SW)

III.4.b Reduce the potential for stormwater pollutants generated from municipal facilities and operations, such as vehicle maintenance and street flushing, by implementing storm water best management practices. (LT - E/SW)

III.4.c Pursue partnerships among government, local businesses and property owners and managers to develop and showcase measures that reduce the amount of urban pollutants in storm water runoff. (LT - E/SW)

III.4.d Educate and engage the public in Clean River Initiative project, and the impacts of pesticides, herbicides, and fertilizer on water quality. (I - E/SW)

III.4.e Develop and implement a plan to detect and eliminate illegal or improper discharges to the stormwater system. (LT - E/SW)

III.4.f Implement a regular pharmaceutical take-back program to reduce the levels of pharmaceuticals entering our rivers. (LT - EH, E/SW)

III.5. Increase the natural filtration of storm- and melt- water. (Work Program for Engineering, Proposed Code Amendment)

III.5.a Amend land use requirements to reduce the amount of allowed impervious surfaces, such as reducing lot coverage dimensional requirements. (I - P, E/SW)

III.5.b Explore the feasibility of requiring pervious surfaces in place of impervious surfaces. (I - E/SW, Fire, P, Streets)

III.6. Require new development to treat its stormwater runoff, with a preference for on-site. (Work Program for Engineering, Proposed Code Amendment)

III.6.a Amend the land use and building codes to require development and redevelopment to incorporate best management practices that will permanently manage and treat stormwater runoff on site. (I - P, B, E/SW)

III.6.b Require Construction Management Plans to include provisions for the installation and maintenance of pollution prevention measures on construction sites. (I - E/SW)

III.7. Encourage existing development to treat its stormwater runoff, with a preference for onsite. (Work Program for Engineering)

III.7.a Explore the creation of incentives for existing development to treat stormwater runoff on-site. (I - P, B, E/SW)

IV. WASTE MANAGEMENT AND REDUCTION

IV.1. Maximize recycling, implement waste reduction and environmentally-responsible purchasing programs and encourage behavior that moves the Aspen Area toward being a zero waste community and extends the life of the Landfill. (Community Goal Collaborative Initiative, Work Program for Environmental Health & Landfill)

IV.1.a Implement programs, including expanded curb-side recycling pick-up and increasing the kinds of materials that can be recycled, to significantly reduce waste and increase recycling. (LT - EH, L)

IV.1.b Evaluate amending regulations to require that all residences and businesses in the Aspen Area recycle office paper, commingled, magazines/newspaper, and paperboard, glass, plastic, cardboard and compost/yard waste. (I - EH, L)

IV.1.c Develop a system for food waste and organic material pickup and a permanent food waste and organics compost operation at the landfill. (I - EH, L)

IV.1.d Incorporate programs to promote and implement "zero waste," for events, businesses, and residents. (LT - EH, L)

IV.1.e Require all events in the Aspen Area to meet the environmental requirements established by the ZGreen Program, addressing waste reduction, energy conservation, and public outreach. (I - EH)

IV.1.f Ensure that there are adequate facilities and resources to accommodate increased recycling levels and a greater diversity of materials. (LT - EH, L)

IV.1.g Reduce the use of paper and plastic bags in the Aspen Area. (I - EH, CI)

IV.1.h Incentivize businesses to use reusable or recyclable cups, bottles, and containers. (I - EH, CI)

IV.1.i Lobby state legislature to improve laws and regulations in order to implement policy. (LT - EH)

IV.2. Adequate funds should be available for environmental monitoring and eventual remediation of the Pitkin County Landfill. (Work Program for Landfill)

IV.2.a Explore and implement mechanisms to ensure there are adequate funds for the landfill operations. (LT - L, EH)

IV.3. Minimize off-site snow storage. (Work Program for Planning, Engineering, Streets, and Environmental Health Departments)

IV.3.a Work with development to minimize off-site snow storage, and explore potential code amendments to implement the policy. (LT – P, E/SW, Streets, EH)

IV.4. Increase the practice of deconstruction and increase the amount of materials that are diverted from the landfill, reused or recycled. (Proposed Code Amendment)

IV.4.a Explore amend City and County codes to require deconstruction rather than demolition of existing structures so that materials and components that can be reused are separated and made available for salvage and reuse, and recyclable materials are handled appropriately. (I/LT- B, EH, P, L)

IV.4.b Explore opportunities to create incentives in the building process for increasing deconstruction and salvage. This could include giving discounted access to the Pitkin County Landfill, adjusting landfill/building permit fees when a building is deconstructed instead of demolished, imposing fees at time of building permit to cover the costs of construction waste that goes to the landfill, or prioritizing building permit review based on the level of deconstruction and on the amount of construction and development waste that is recycled. (LT – EH, B, L)

IV.4.c Explore opportunities in the state to recycle or re-use construction and development waste that cannot be accommodated at the Pitkin County landfill. (LT – EH, L)

V. RENEWABLE ENERGY

V.1. Reduce our dependence on non-renewable energy sources and instill an ethic of energy accountability. (Community Goal)

V.1.a Retrofit existing City and County buildings with renewable energy systems and energy efficiency improvements. (I – CI, U)

V.1.b Evaluate amending the building codes to reduce phantom energy loads in new and existing buildings. (I - B)

V.1.c Evaluate potential energy requirements and quantify greenhouse gas emissions if the Urban Growth Boundary was completely built out according to current zoning. Consider code and policy changes based on the study in order to conserve energy and reduce trips. (LT – P, EH, CI, T, B, U)

V.1.d Evaluate amending the building code to maximize the use of renewable energy in all new construction. (LT – CI, B)

V.1.e Continue efforts to educate and engage the public regarding energy usage and opportunities to increase energy efficiency. (I - EH, CI, U)

V.2. Continue to pursue efforts to establish an electric portfolio of 100% renewable energy. (Community Goal)

V.2.a Complete and implement the Clean Energy Plan. (LT – U, CI)

V.3. By 2020, reduce electricity and natural gas consumption in the Urban Growth Boundary from 2004 levels by 15% (to 229,488.1 tons CO₂-e). (Community Goal)

V.3.a Work with Holy Cross to increase the renewable energy mix in their electricity provided to the Aspen Area. Explore options for greater utilization of the City of Aspen's energy utility in the Aspen Area. (LT - CI, U)

V.3.b Implement efficiency programs in conjunction with Source Gas. (LT - CI, U)

V.3.c Incentivize private development of ground source heat pumps, solar panels and wind power. (LT - CI, U)

V.3.d Explore opportunities for local renewable energy production, including ground source heat pumps, the creation of geothermal heating districts, and the use of solar and wind power. (LT - U)

V.4. Require new development and redevelopment to minimize their energy usage and use on-site renewable energies as the site allows. (Incentive Program, Proposed Code Amendment)

V.4.a Establish a City/County renewable energy project in the Urban Growth Boundary that projects can buy into as an alternative to renewable energy on-site. (I - CI, EH, B)

V.4.b Amend the City and County building codes to prohibit outdoor fire pits, hot tubs and snowmelt systems unless they are powered by nonpolluting, 100% renewable energies. (I - B, EH)

V.4.c Adopt a program that would allow property owners to get a loan from the City or County for energy upgrades that would be paid back over time through increased property taxes (e.g. a lien on the property). (I - CI)

V.4.d Amend City and County land use codes to remove barriers to the use of renewable energy, such as solar panels, on development. (I - P)

V.4.e Amend the land use code to require protection of solar access and proper siting for solar orientation in all development. (I - P)

V.4.f Amend the building code to require new construction to accommodate future energy upgrades, such as rooftop wiring. (I - B)

V.5. Encourage existing development to minimize their energy usage and use on-site renewable energies as the site allows. (Incentive Program)

V.5.a Require energy audits when an improved property is sold so the new buyer is aware of the energy costs, and potential improvements, of the building. (LT - CI)

V.5.b Adopt a program that would allow property owners to get a loan from the City or County for energy upgrades that would be paid back over time through increased property taxes (e.g. a lien on the property). (I - CI)

V.5.c Amend City and County land use codes to remove barriers to the use of renewable energy, such as solar panels, on development. (I - P)

VI. WEED MANAGEMENT

VI.1. Ensure there is proper resource management to minimize the negative impacts of weeds on the Aspen Area. (Community Goal, Work Program for Parks and Open Space Departments)

VI.1.a. Broaden public education about specific techniques to limit the spread of invasive noxious weeds. (I - LM, P/OS)

VI.1.b Create new, and enhance existing, policies that enable partnerships and cost sharing between government and property owners to achieve compliance with the Colorado Noxious Weed Act. (I - LM)

VII. WILDLIFE AND WILDLIFE HABITAT

VII.1. Sustain, protect and restore biodiversity and native ecosystems through land use planning, resource acquisition and best land management practices on public and private lands. (Community Goal, Collaborative Initiative, Work Program for Planning, Parks, and Open Space Departments, Proposed Code Amendment)

VII.1.a Align City and County stream buffer/setback standards to comprehensively buffer development from the riparian ecosystem associated with the Roaring Fork River and its tributaries. (LT – P)

VII.1.b Improve and coordinate existing City and County standards and incentives for the reclamation of riparian and wetland habitat mitigation and/or replacement. (I – P, P/OS)

VII.1.c Support use of City and County Open Space and Trails funds for purchase and maintenance of intact, unfragmented wildlife habitat, or critical connections between habitats for the preservation of native plant and animal species. (LT – P/OS)

VII.1.d Promote the diversity and vitality of the “urban forest” that exists both within the City of Aspen and in the Wildland Urban Interface. (LT – P/OS)

VII.1.e Improve existing standards, enforcement and education as needed to enhance the coexistence of bears and people in the City of Aspen and in Pitkin County. (LT – EH, LM)

VII.2. Elected and appointed Boards and Commissions should consider environmental and wildlife issues when making decisions. (Community Goal, Proposed Code Amendment)

VII.2.a Amend the code, as needed, to ensure environmental and wildlife issues are incorporated as review criteria. (LT – P)

Historic Preservation Policies and Action Items

I. HISTORIC PRESERVATION EDUCATION

I.1. Raise public awareness and appreciation for the many eras of Aspen's story. (Collaborative Initiative)

I.1.a Create a publicly-accessible online database to collect and distribute information about our historic buildings. (I – P, Aspen Historical Society)

I.1.b Establish a system for compiling information about significant buildings that are demolished, including photographs and relevant stories about people and events associated with those buildings. (LT – P, Aspen Historical Society)

I.1.c Establish a Landmark Signage Program with standards for interpretive signs. (I – P, HPC)

I.1.d Collaborate with local organizations to plan events and related materials regarding our history and architectural innovation. (LT – P, local agencies)

I.2. Improve public awareness and understanding of the City and County Historic Preservation Programs. (Collaborative Initiative)

I.2.a Implement a comprehensive education program that explains the overall goal of the preservation programs, and rights and obligations of owners, developers, Realtors® and licensed historic contractors. (I – P)

I.2.b Update standards for public notices to include a non-technical summary about proposed projects and links to on-line development plans, staff reports, 3-D modeling, and meeting schedules. (I – P)

I.2.c Use 3-D modeling as an educational tool for the public. (LT – P)

I.2.d Collaborate with local groups, such as the Aspen Historical Society, to plan special events related to Aspen Area history and architectural innovation, etc. (I – P, local agencies)

II. UPDATING THE HISTORIC PRESERVATION PROGRAM

II.1. Ensure that city codes support innovative development while respecting the historic integrity of designated structures and ensuring compatibility with the surrounding context in terms of site coverage, mass, scale, height and form. See Managing Growth for Community & Economic Sustainability Policy IV.3 (Work Program for Planning, Proposed Code Amendment)

II.1.a Review Historic Preservation Design Guidelines and Commercial Design Guidelines to ensure that development is compatible with historic resources. (I – P)

II.1.b Use 3-D modeling to implement the policy. (I – P)

II.2. Ensure that the Historic Preservation Benefits Package encourages owners of landmark property to preserve structures to the highest possible degree of historic integrity while minimizing adverse impacts to the neighborhood. (Work Program for Planning)

II.2.a Use 3-D modeling to compare and contrast what has been allowed under the Historic Preservation Design Guidelines and Benefits Package to what would have been allowed under regular zoning requirements. Consider amending the code to address impacts on the neighborhood based on the findings. (I - P)

II.2.b Research benefit packages for preserving properties in other communities, and incorporate best practices into City and County codes. (I - P)

II.2.c Explore the creation of benefits that do not affect development size, such as fee waivers or tax incentives, for historic properties (LT - P)

II.3. Maximize the use of the City's Historic Transferable Development Right Program (TDR) as a method of preserving the historic integrity of designated structures. (Work Program for Planning Department)

II.3.a Explore amending the Code to require Planned Unit Developments (PUD) to purchase TDRs for any square footage above the underlying zone district allotment. (LT - P)

III. PUBLIC SECTOR

III.1. The public sector should set an example as a responsible steward of preservation and adaptive re-use of historic buildings. (Work Program for Planning Department)

III.1.a Establish a long-term plan for the viability, functionality and energy efficiency of all publicly-owned historic buildings. (I - P)

III.1.b Evaluate publicly-owned buildings and sites that are potential historic resources while also exploring appropriate changes in use or additions using new Context Papers, Designation Criteria and Integrity Scoring System. (I - P)

III.1.c Explore purchasing historic properties that can also meet buy-down program goals for Community Workforce Housing. (I - P, APCHA)

IV. PUBLICLY ACCESSIBLE INTERIORS

IV.1. Explore code changes to preserve exceptional character-defining historic interiors in public buildings and publicly accessible buildings. (Work Program for Planning and Asset Management Departments)

IV.1.a Inventory historic landmarks that are publicly accessible and identify character-defining interior features. (I - P)

IV.1.b Establish criteria for historic designation of character-defining historic interiors that balance preservation, functionality, and energy efficiency. (I - P)

IV.1.c Use the Secretary of the Interior's Standards for the preservation of historic interiors as guidelines for amendments to the Land Use Code. (LT - P)

V. REVIEW PROCESS & ENFORCEMENT

V.1. The Historic Preservation Commission's review process should be positive, productive and fair, with a high level of integrity, consistency and collaboration. (Work Program for Planning Department and HPC)

V.1.a Ensure updates to the Historic Preservation program reflect the policy. (I – P)

V.2. Routinely and fairly enforce property specific approvals. (Work Program for Planning Department and HPC)

V.2.a Improve the City's and County's enforcement of its rules and regulations related to historic preservation. (I – P)

V.2.b Require on-going communication with staff during any renovation of or addition to historic structures or sites. (I - P)

V.2.c Examine the penalties for owners and historic contractors when they violate approvals to determine if these penalties are effective and fair. Amend the code based on the findings. (LT – P)

VI. ENERGY EFFICIENCY

VI.1. All historic landmark properties should be maintained in a manner that improves energy efficiency while maintaining architectural integrity. (Proposed Code Amendment)

VI.1.a Provide owners of historic landmarks with free assistance from the Building Department to facilitate energy-efficiency upgrades. (I – B)

VI.1.b Provide information about energy-efficiency loans and other resources to all property owners that go through the historic preservation review process. (LT – P, B)

The Lifelong Aspenite Policies and Action Items

I. SELF-RELIANCE

I.1. Ensure that affordable, accessible high quality childcare is available for all families who need it. (Community Goal)

I.1.a Establish an on-going program that encourages and supports parent engagement and leadership in childcare programs and schools. (LT – Aspen K-12, KF, PH, Community Non-Profits, HHS)

I.1.b Work with local, regional, state, and federal organizations to maintain and increase funding so that early childhood education remains affordable. (I – KF)

I.1.c Improve the quality of childcare through a variety of tools, such as grants, coaching, pre-licensing support and Qualistar Rating. (I – KF)

I.2. Encourage businesses to adopt family-friendly employment policies. (Collaborative Initiative)

I.2.a Educate employers, increase public awareness and explore lobbying for legislation regarding the “best business practices” to enhance business productivity while supporting families. (I – HHS, KF, CMC, Private Sector)

I.2.b The public sector should serve as a model for implementing this policy. (LT – HHS, KF, City Manager, County Manager)

I.3. Promote self-sufficiency and self-reliance through coordinated, comprehensive and sustainable programs. (Collaborative Initiative, Work Program for Health and Human Services)

I.3.a Educate our community about the Self-Sufficiency Standard, the importance of earning a livable wage, and the resources available to promote self-sufficiency. (I – HHS, PH, Aspen K-12, KF)

I.3.b Identify all local subsidies, such as RFTA, APCHA, Child Care assistance, food programs and health care, and educate our community about their monetary value. (LT – HHS, RFTA, APCHA, KF, PH, Community Non-Profits, Private Sector)

I.3.c Encourage programs that will foster cultural and language integration in businesses and schools. (LT- Community Organizations)

I.3.d Ensure that community is literate by providing opportunities for English and other language learning. (LT- Aspen K-12, CMC, Community Organizations)

I.3.e Promote enforcement of fair job and housing laws and ensure effective bilingual communication. (LT- Community Non-Profits, APCHA)

I.4. Expand the opportunity for safe and healthy housing for those in need, including older adults, people with disabilities, and low-income populations. (Work Program for Health and Human Services)

I.4.a Establish a comprehensive network of in-home services to support seniors and people with disabilities. (I – HHS, SrS, Senior Council, Private Sector)

I.4.b Explore a range of options to ensure availability of all levels of care accommodations and services for older adults and the disabled so they can choose to remain members of the community for life. (LT- SrS, Senior Council, Private Sector)

I.4.c Explore the concept of transitional and permanent low-income housing for community members striving to become self-reliant. (LT - Private Sector, HHS, Community Non-Profits, APCHA, P)

I.5. Ensure that all community members have access to all public assistance programs for which they qualify. (Work Program for Health and Human Services)

I.5.a As the budget allows, maximize all state/federal allocations by increasing the income levels under which members of the community may access public assistance programs. (I – HHS, KF, APCHA)

I.5.b Lobby the state and federal government to change assistance guidelines and funding to reflect the self-sufficiency standard. (I – HHS, City Manager, County Manager)

I.5.c Explore public transportation options to enable community members to access public assistance programs throughout the Roaring Fork Valley. (I – RFTA, T, HHS)

II. PUBLIC SAFETY

II.1. Ensure a safe community. (Community Goal)

II.1.a Strengthen coordination between public safety, schools and non-profits to support education, awareness and prevention programs. (Ex: Teen and Dating Violence Education courses at Aspen HS) (I – HHS, LE, Community Non-Profits, Aspen K-12)

II.1.b Establish reliable funding and staffing levels to provide public safety operations to meet growing public needs and unfunded mandates. (LT - HHS, PH, LE)

II.1.c Promote conflict resolution skills amongst neighbors and homeowners' associations. (I - LE, Community Non-Profits)

II.1.d Explore expanding community policing and neighborhood watch programs. (LT - LE)

II.1.e Participate in local and regional training on emergency plan components and instill a strong incident command culture (LT - LE)

II.1.f Encourage the Public Safety Council to continue clarifying roles and responsibilities in order to be responsive to changes in homeland security and to protect the Aspen Area residents, workers and visitors. (LT - LE)

II.1.g Strengthen local and regional emergency response teams. (LT - LE, PH, HHS, AVH, Aspen K-12, CMC)

II.2. Ensure a safety net exists for all at risk Aspen Area residents, visitors and workers. (Community Goal)

II.2.a Create programming to reduce the incidence of family violence and ensure the safety, permanency and well-being of children in the Aspen area. (I – HHS, LE, PH, Aspen K-12, KF, Community Non-Profits)

II.2.b Streamline and coordinate the community response to incidents, such as family violence, financial exploitation of adults and people with disabilities, and sexual assault, through enhanced collaboration among the appropriate agencies. (I – HHS, Response, DA's office, Law Enforcement, Mental Health and Substance Abuse counselors, Probation, Case management programs, Community Non-profits)

II.2.c Develop a comprehensive inmate re-entry program. (LT – LE, HHS, Community Non-Profits)

II.2.d Explore the creation of year-round homeless shelters, half-way houses and programs that address mental health, substance abuse, physical health, job assistance and case management. (LT – Community Non-Profits, HHS)

II.2.e Ensure dedicated funding and comprehensive resource development to provide coordinated, timely and quality services to at risk Aspenites. (LT- HHS, City Manager, County Manager, LPHA, PH)

II.3. Reduce juvenile and adult crime. (Work Program for Health and Safety Agencies)

II.3.a. Support recreational, cultural, and educational choices for youth to keep kids safe and engaged in the community, including mentoring and after-school and recreation programming (I - HHS, Community Non-Profits, CR, Aspen K-12)

II.3.b. Create a Restorative Justice Program and/or other alternative sentencing for juveniles and adults that allow for people to learn from and make amends for their crimes (I - LE, Community Non-Profits)

II.3.c. Develop and implement programs that provide prevention, intervention and treatment for juvenile sexual offenders. (LT - HHS, Community Non-Profits)

III. HEALTH AND WELL-BEING

III.1. Promote community-wide collaboration to address health and social service needs throughout the community and in association with new development. (Community Goal, Work Program for health and Human Services, Proposed Code Amendment)

III.1.a Conduct a Community Health Assessment for the Aspen Area every 5 years and analyze, prioritize and implement findings. (I – HHS, PH, LPHA, EH, AVH, Community Non-Profits)

III.1.b Identify specific gaps in our health and social service networks. (I – HHS, PH, LPHA, EH, AVH, Community Non-Profits)

III.1.c Establish and implement a long term strategic plan to fund creative and sustainable solutions to the gaps in service. (I - HHS, LPHA, PH, EH, City Manager, County Manager)

III.1.d Address the gaps in the health and social service networks, with a goal of providing accessibility and affordability. (LT- Aspen K-12, HHS, Private Sector, Community Organizations, KF)

III.1.e Explore possible amendments to the City and County codes to include review criteria for self-reliance, health, and safety issues. (I – P, HHS)

III.1.f Explore the creation of a fee or other methods to mitigate impacts from development. (I – HHS, P, PH, SE)

III.1.g Add Health and Human Services to the regular internal review as a referral for land use applications. (I – HHS, P, APCHA, PH, LE, Community Non- Profits, EH)

III.1.h Ensure all residents have access to quality and affordable fitness programs, including adaptive care. (LT – HHS, ARD, P/OS)

III.2. Ensure that a comprehensive health care system exists and that the community is aware of the system. (Community Goal, Collaborative Initiative)

III.2.a Educate the community about the importance of environmental and lifestyle risk factors, and provide programs to help reduce those risks (I – EH, HHS, LPHA, PH)

III.2.b Strengthen partnerships and communication between health care agencies and providers to enhance community health programming, cohesive case management and electronic communication. (LT- PH, HHS, AVH, Private Sector Health Providers, KF, EH, LPHA)

III.2.c Create a seamless system of services for families to support their children's positive development from birth through school-age. (LT - KF, PH, Aspen K-12)

III.2.d Create an outreach program to link community members to health insurance. (I – HHS, Private Sector Health Providers)

III.2.e Support future opportunities and programs that will maximize the local benefits of Health Care Reform. (LT - HHS, PH, AVH, Private Sector, Community Non-Profits)

III.2.f Educate the community regarding the connection between improved child development and success in school and life. (I – KF, Aspen K-12, PH, HHS)

III.2.g Create comprehensive, accessible and bilingual tools, such as a phone and web directory, that provide information about available health, safety, education and social services. (I – HHS, LPHC, All Departments/Agencies)

III.2.h Continue collaboration and communication between the City and County Boards of Health. (I - PH, EH, LPHA)

III.3. Ensure that residents have access to primary care including prevention, palliative care, long-term care and health maintenance services, regardless of payer source. (Community Goal, Collaborative Initiative)

III.3.a Work with local and regional healthcare partners to develop, implement and align community health priorities through the Community Health Assessment. (I - PH, LPHA, EH, AVH, Community Non-Profits)

III.3.b Determine and address the need for improved access to Medicare, Medicaid, CHP+ and indigent care providers in the Aspen Area. (I – PH, Community Non-Profits, HHS, AVH, private providers, SrS)

III.3.c Collaborate with local, regional and state organizations to implement the policy. (LT – KF, PH, AVH, HHS)

III.3.d Support community efforts to attract and engage health care providers to share in the provision of health services to residents over 65 and people with disabilities (Medicare insured). (I – PH, HHS, SrS, AVH, Private Sector)

III.3.e Explore the creation of a school-based health clinic and resource center in the Aspen School District (LT - Community Non-Profits, Aspen K-12 , HHS)

III.3.f Address the causes of childhood and adult obesity through development of comprehensive programs and education about nutrition, physical activity and access to healthy food. (LT - PH, LPHA, Aspen K- 12, Community Non-Profits, Private Sector)

III.3.g Support partnerships to create year-round safety education and prevention programs, and secure funding. (LT - AVH, PH, EH, LE, Aspen K-12, RFTA, CMC)

III.4. Ensure that residents of all ages and abilities have access to a comprehensive mental health and substance abuse system that addresses acute and chronic mental health needs. (Community Goal, Collaborative Initiative)

III.4.a. Work with community non-profits and local mental health and health care providers, to create a comprehensive, integrated and sustainable mental health system. (I – Community Non-Profits, HHS, Private Sector)

III.4.b Collaborate with local, regional and state organizations that work with children and families, to increase access to preventive care in all mental health areas for children. (LT – KF, Community Non-Profits, HHS)

III.4.c. Ensure that accessible and affordable mental health screening and treatment is available. (I – Community Non-Profits, SrS, HHS)

III.4.d. Work with public and private mental health practitioners to create an action plan that addresses senior issues, especially depression and anxiety. (I – SrS, Community Non-Profits)

III.4.e Support the creation and implementation of a comprehensive suicide prevention program. (I - Community Non-Profits, HHS)

III.4.f. Enhance substance abuse prevention education for children, adults and families. (I - Community Non-Profits, Aspen K-12, HHS)

III.4.g. Establish sustainable detoxification services and programs for the Aspen Area. (LT – Community Non-Profits, HHS)

III.5. Ensure that all residents have access to a comprehensive dental program. (Community Goal, Collaborative Initiative)

III.5.a. Explore the creation of a local and/or regional low-income dental care program. (I- PH, LPHA, HHS, Community Non-Profits)

III.5.b Provide community outreach, communication, and education on the importance of oral health and the availability of affordable dental services available in the Roaring Fork Valley. (I – Community Non-Profits, PH, HHS)

III.5.c Ensure dentistry for all ages is accessible and affordable. (LT - Private Sector)

III.6. Promote healthy family functioning. (Collaborative Initiative)

III.6.a. Provide consistent, quality education about what behaviors reflect healthy family functioning and about the availability of resources that support healthy family development. (LT - KF, PH, HHS, Aspen K- 12)

III.6.b Create a network of “Family to Family” support programs to use local families to mentor residents who have relocated to the area, who may be isolated from extended family or who may lack the knowledge or skills related to healthy development and interactions. (LT - HHS, PH, Community Non-profits)

III.6.c Support intergenerational and intercultural programming in all public facilities. (LT - KF, SrS, HHS)

III.6.d Establish an “Active Retiree Database” that includes a list of retirees and their talents/skills, along with a list of volunteer and part-time/ full-time “help wanted” opportunities to match people with activities/jobs (LT - ACRA, Private sector, SrS)

III.7. Promote and provide access to organic and sustainable local and regional food production. (Community Goal, Collaborative Initiative)

III.7.a Implement programs and policies to support co-operatives and local production of good, clean, and fairly priced food. (LT – City Manager, County Manager, LPHA, EH, Community Organizations)

III.7.b Amend City and County land use codes to eliminate regulatory barriers to small-scale personal agriculture, such as rooftop gardens, green roofs, cold frames, and green houses. (LT – P)

III.7.c Explore the use of public lands for community gardens and permaculture activities. (I – P, P/OS, Community Organizations)

III.7.d Coordinate efforts to educate the community about local food production, including programs that teach gardening. (LT – CMC, EH, Community Organizations)

III.7.e Create incentives so Women Infants and Children (WIC) nutrition program vouchers are accepted for fresh produce at the Aspen Farmer’s Market. (I- PH, LPHA, City Manager, County Manager)

IV. EDUCATION AND LIFELONG LEARNING

IV.1. Ensure all residents have access to local educational opportunities. (Community Goal, Collaborative Initiative)

IV.1.a Develop targeted education programs, such as reducing early parenthood, to maximize teens’ ability to be self-sufficient as adults. (I – Community Non-Profits, HHS, Aspen K-12, CMC)

IV.1.b Provide access to career paths using local educational partners - Colorado Mountain College, Aspen School District and others – for community members of all abilities to train and pursue educational interests leading to locally-based careers. (LT – CMC, Aspen K-12, HHS)

IV.1.c Explore opportunities for our youth, including those with disabilities, to return or remain here into adulthood. (I – Private Sector, CMC, Community Non-Profits)

IV.1.d Incentivize the creation of jobs and volunteer opportunities for youth, seniors and people with disabilities. (LT- City Manager, County Manager, HHS)

IV.1.e Explore opportunities for continuing education programs for adults, seniors and anyone who may be isolated. (LT – HHS, Community Non-Profits)

Population Segments Chart

(in Urban Growth Boundary at Peak Season)

Population Segments	1990	2000	2007/08	2000-08 +/-
Total Jobs in UGB	11,581	14,313	15,706	+1,393
<i>Commuters from outside Pitkin County into UGB</i>	6,410	7,815	8,290	+475
<i>UGB population in Affordable Housing (Owners + renters)</i>	1,941	4,055 (estimate)	6,170	+2,115
<i>UGB population in local-owned free market residences (Owners + renters)</i>	Not avail.	4,840*	3,610	-1,230
Visitors in UGB	Not avail.	15,111	15,205	+94
<i>Population staying in 2nd homes (4-6 weeks per year / 80% occupancy.)</i>	Not avail.	8,563*	9,427	+864
<i>Population in lodging/fractionals (At 80% occupancy for peak months)</i>	7,742	6,548	5,778	-770
Total Population in UGB	Not avail.	29,424	30,911	+1,487

* Estimate based on residences in 2003.

Jobs in UGB: Colorado Dept. of Labor & Employment for PitCo jobs; multiplied by .73 factor to determine jobs in UGB per State of the Aspen Area report. 2007 numbers low by at least 350 due to relocation of contractors, building suppliers outside of PitCo but with workers performing jobs in PitCo/UGB, according to SOAA Economics chapter, Fig. 5.

Commuters: PitCo jobs minus people living and working in PitCo (reduced by .08 factor for people living in PitCo and working outside PitCo according to 2000 Census) and reduced by .27 factor for people living in PitCo and working outside UGB, according to SOAA. 2007 numbers low by at least 350 due to relocation of contractors, building suppliers outside of PitCo, but with workers performing jobs in PitCo/UGB.

AH Pop.: Based on 1990 and 2009 inventory by type of unit, using population factors based on APCHA guidelines for occupancy rates. 2000 population based on average of 1990/2009.

FM Pop.: Based on Assessor's Office mailing address w/Aspen zip codes, multiplied by 2.05 people per household, according to 2000 Census. Number of residences from 2007/8 increased by 600 to obtain number of residences in 2003, according to SOAA, Housing Chapter, footnote 5.

UGB Visitors: Adding together 2nd home population and lodging/fractional population.

2nd Home Pop: Based on Assessor's Office mailing address w/non-local zip code, multiplied by 1.5 people per bedroom, according to Venturoni Surveys & Research. Number of residences from 2007/8 reduced by 600 to obtain number of residences in 2003, according to SOAA, Housing Chapter, footnote 5. Population calculated using 3.5 bedrooms per residence, as found in Assessor's study. Assumed 80% occupancy.

Lodging Pop: Pillow counts from SAS and RRC, multiplied by average peak season occupancy rate.